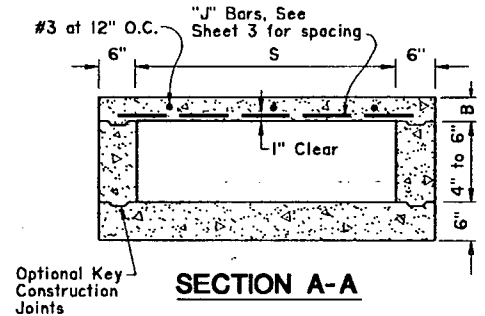
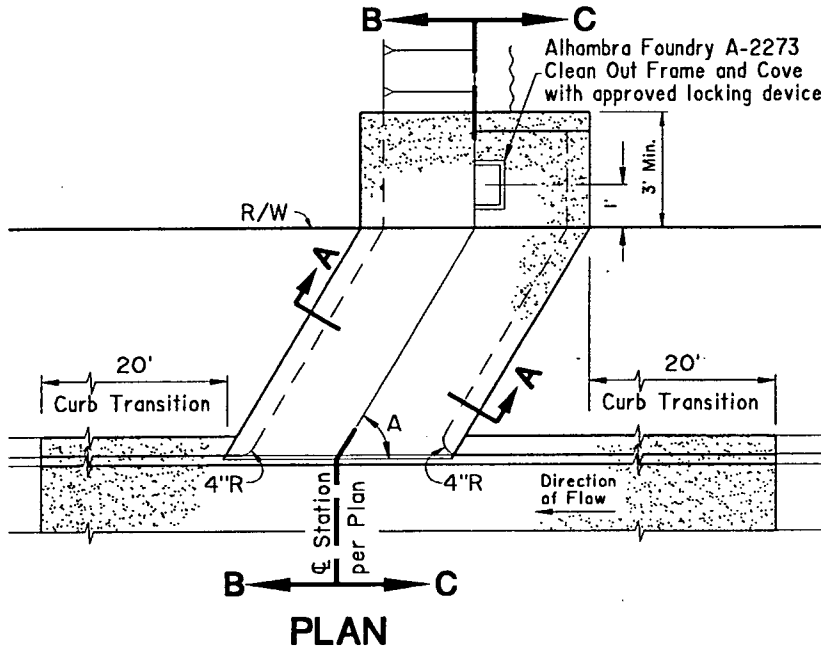


NOTES

1. See Sheet 3 for details and notes.
2. Angle A = 75° Max., 40° Min.
3. Span "S" and height of opening and curb face at culvert (Section A-A) shall be noted on plans.
4. Concrete Class = 560-C-3250, 1" rock, 4" max. slump.

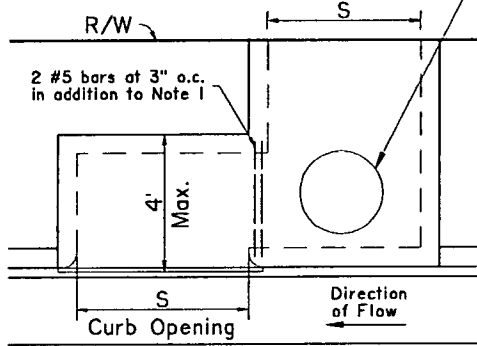


SECTION A-A

Notes for Special Design:

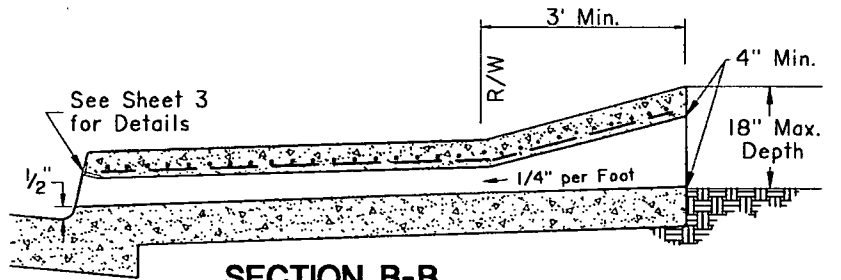
1. Use steel from Table on Sheet 3.
2. 20' Curb transition on either side required.

Manhole per Std. Dwg. 204 or as approved by Director of Engineering.

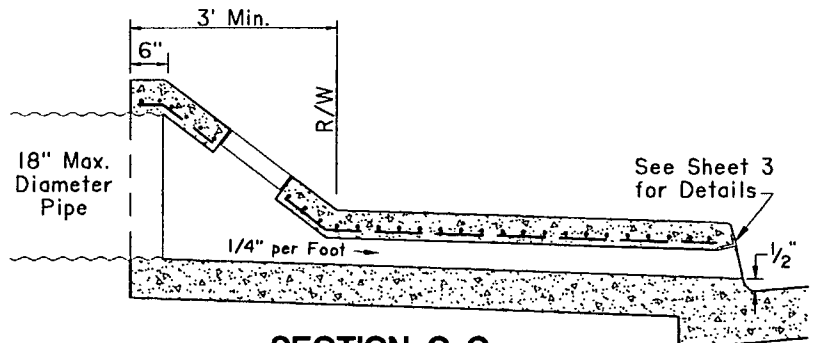


PLAN

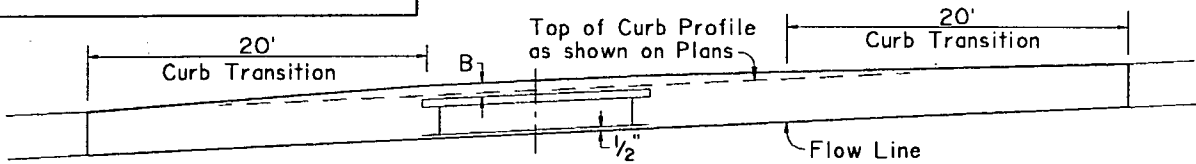
**SPECIAL DESIGN
OPTIONAL HIGH VELOCITY DIVERTER**



SECTION B-B



SECTION C-C



PROFILE

DRAWN PLS.
DATE 8/1/95

**CITY OF FULLERTON
ENGINEERING DEPARTMENT**

REVISED

STD. NO.

PARKWAY CULVERT - TYPE "A"

128

APPROVED

Robert Hodan
DIRECTOR OF ENGINEERING

DATE

8/16/95

DATE