

REVISIONS

APPROVALS

DESCRIPTIONS

BY

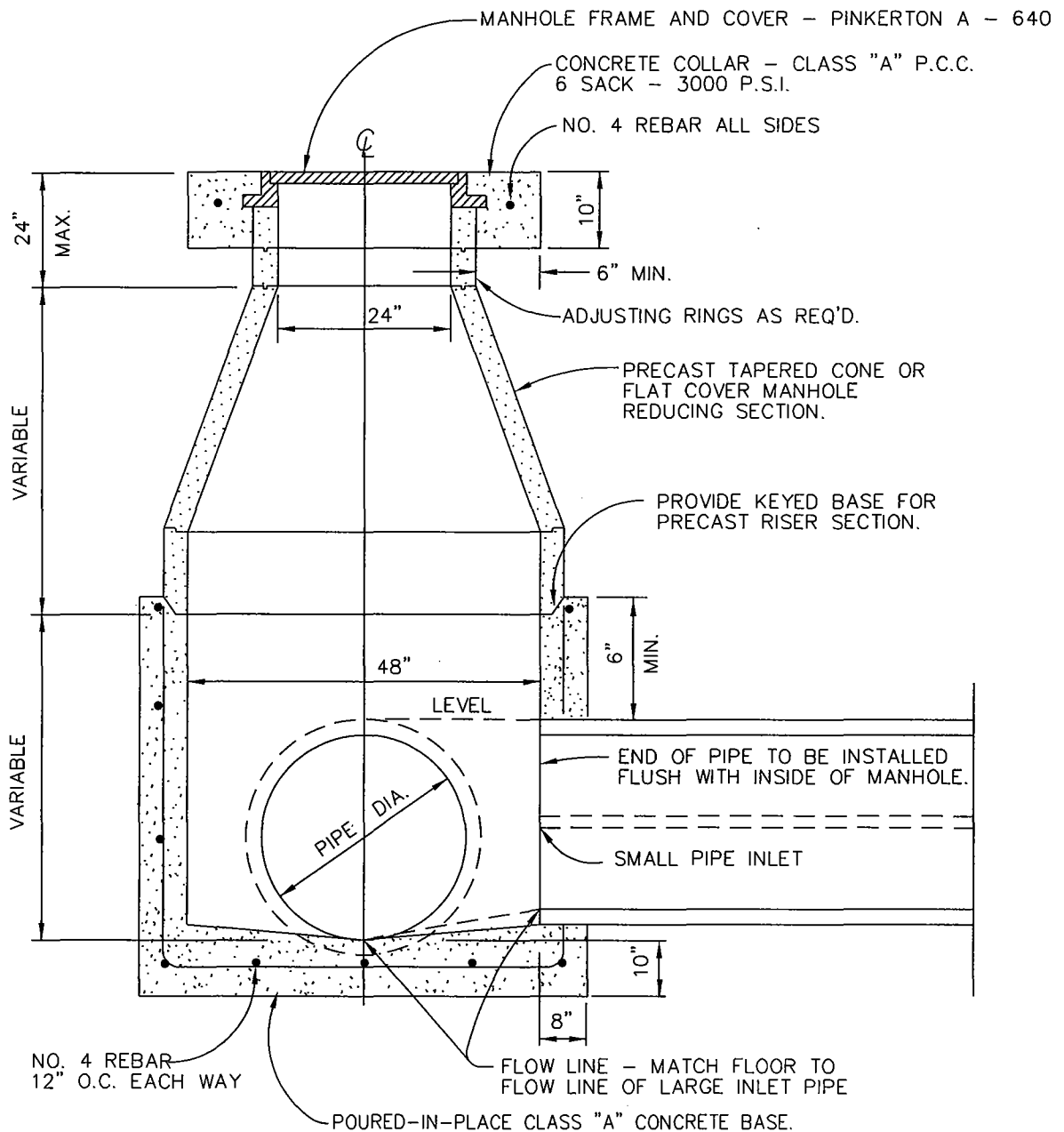
DATE

APPROVED

COUNCIL RESOLUTION NO. 26-92

3/10/92

- NOTE: 1. PRECAST PIPE, ADJUSTING RINGS AND TAPERED SECTIONS SHALL BE CONSTRUCTED IN ACCORDANCE WITH STATE STANDARDS FOR CLASS 2 REINFORCED CONCRETE.
2. ALL JOINTS BETWEEN PRECAST SECTIONS SHALL BE MORTARED.
3. INTERIOR OF THE MANHOLE SHALL HAVE A SMOOTH TROWELED SURFACE.
4. MANHOLE COVER SHALL HAVE THE WORDS "STORM SEWER" MOLDED INTO THE COVER.



DRAWN BY:  
R.A.L.  
DESIGNED BY:  
S.J.S.  
DATE:  
2/27/92  
FILE NAME:  
AT501.DWG

CITY OF ATASCADERO  
ENGINEERING DEPARTMENT

DRAWING NO.

STORM DRAIN MANHOLE

501

REVISIONS

APPROVALS

DESCRIPTIONS

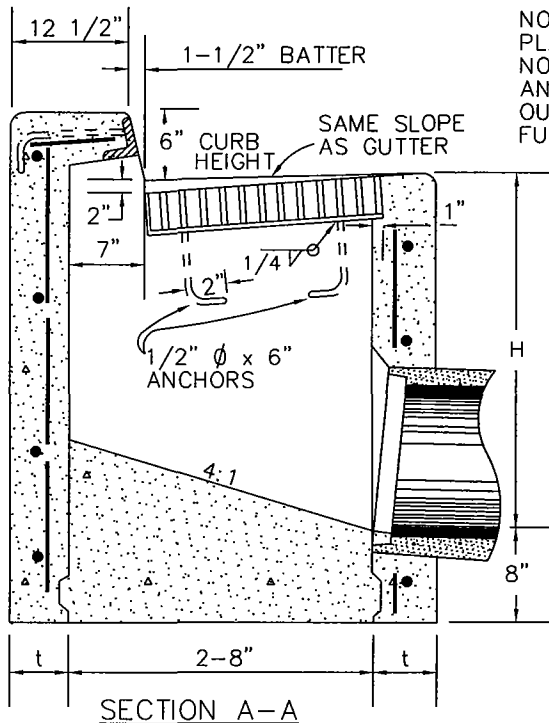
BY

DATE

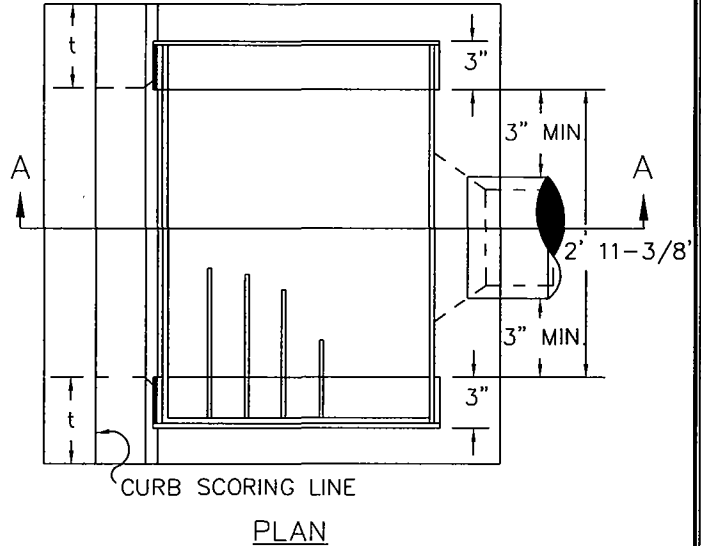
APPROVED

COUNCIL RESOLUTION NO. 26-92

3/10/92

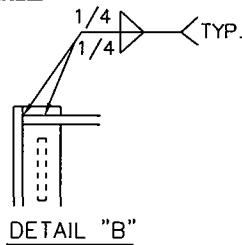
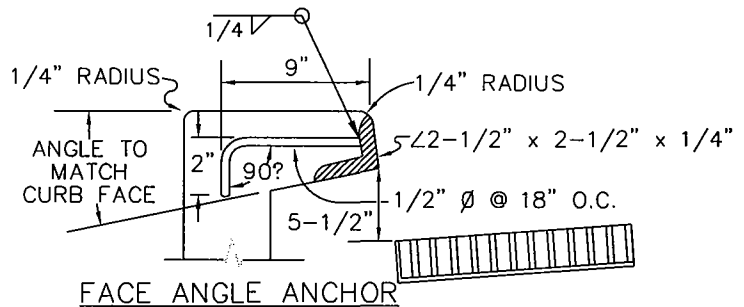


NOTE: REINFORCING STEEL SHALL BE #4 BARS AT 18" O.C. PLACED 1-1/2" CLEAR TO INSIDE OF BOX UNLESS OTHERWISE NOTED. BASIN FLOORS SHALL HAVE WOOD FLOAT FINISH AND A MINIMUM SLOPE OF 4:1 FROM ALL DIRECTIONS TOWARDS OUTLET PIPE.. USE CLASS "A" P.C.C. FACE ANGLE TO EXTEND FULL WIDTH OF BOX..



| H               | t  |
|-----------------|----|
| 8'-0" OR LESS   | 6" |
| 8'-1" TO 20'-0" | 8" |

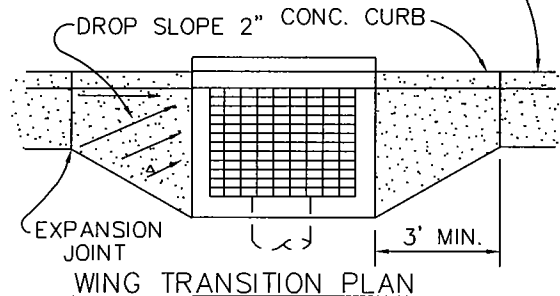
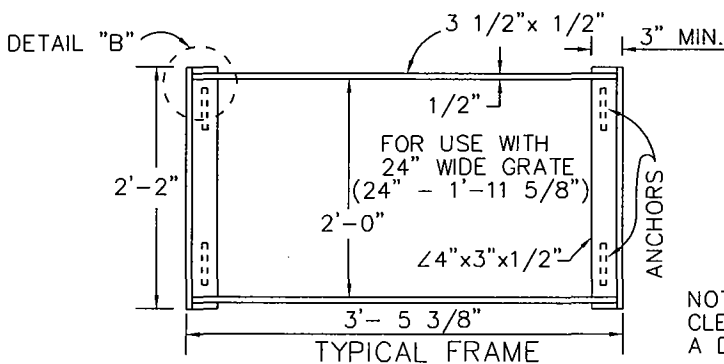
HEIGHT TABLE



NOTE: FRAME SHALL BE DIPPED OR PAINTED IN COMMERCIAL QUALITY ASPHALTUM PAINT.

NOTE: GRATES TO BE BICYCLE PROOF PER STATE STD. PLAN D77-B

A.C. BERM IN RURAL AREAS ONLY



NOTE: PIPES THAT ARE UNABLE TO ATTAIN 3" MIN. CLEARANCE FROM INSIDE BOX WALLS WILL REQUIRE A DESIGN APPROVED BY THE CITY ENGINEER.

DRAWN BY: R.A.L.

DESIGNED BY: S.J.S.

DATE: 02/27/92

FILE NAME: AT502.DWG

CITY OF ATASCADERO  
ENGINEERING DEPARTMENT

DRAWING NO.

STORM DRAIN INLET

502

REVISIONS

APPROVALS

DESCRIPTIONS

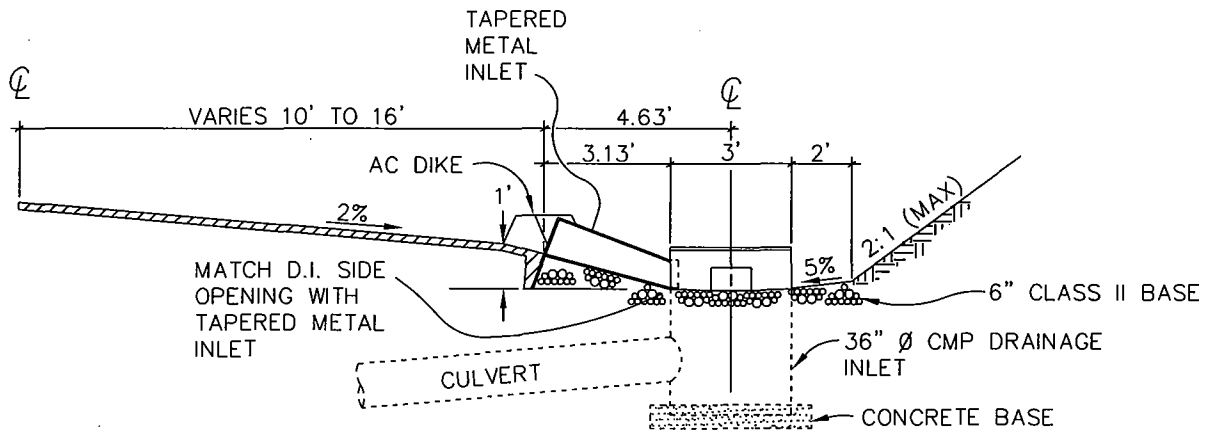
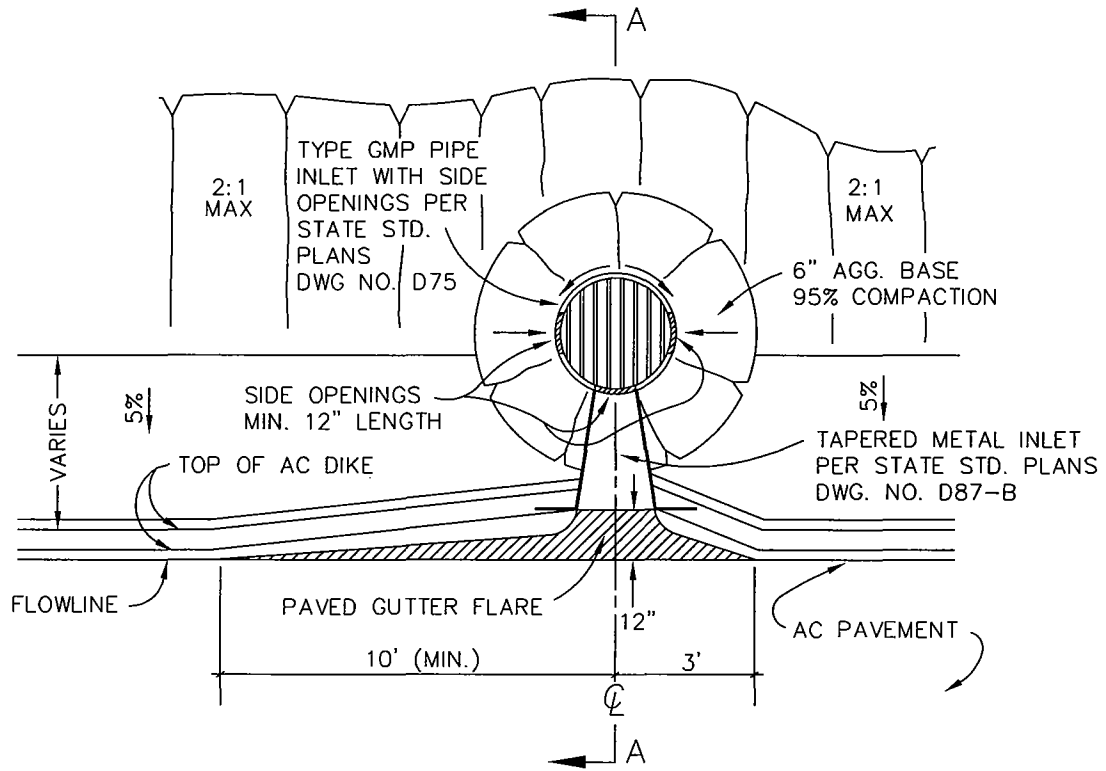
BY

DATE

APPROVED

COUNCIL RESOLUTION NO. 26-92

3/10/92



SECTION A-A

NOTE:  
 IN SAG LOCATIONS USE 10'  
 LENGTH OF GUTTER FLARE  
 ON BOTH SIDES AND GRATED  
 DRAINAGE INLET.

DRAWN BY:  
 R.L.W.  
 DESIGNED BY:  
 S.J.S.  
 DATE:  
 02/27/92  
 FILE NAME:  
 AT503.DWG

CITY OF ATASCADERO  
 ENGINEERING DEPARTMENT

RURAL DRAINAGE INLET  
 ROADS WITH AC DIKE

DRAWING NO.  
 503

REVISIONS

APPROVALS

DESCRIPTIONS

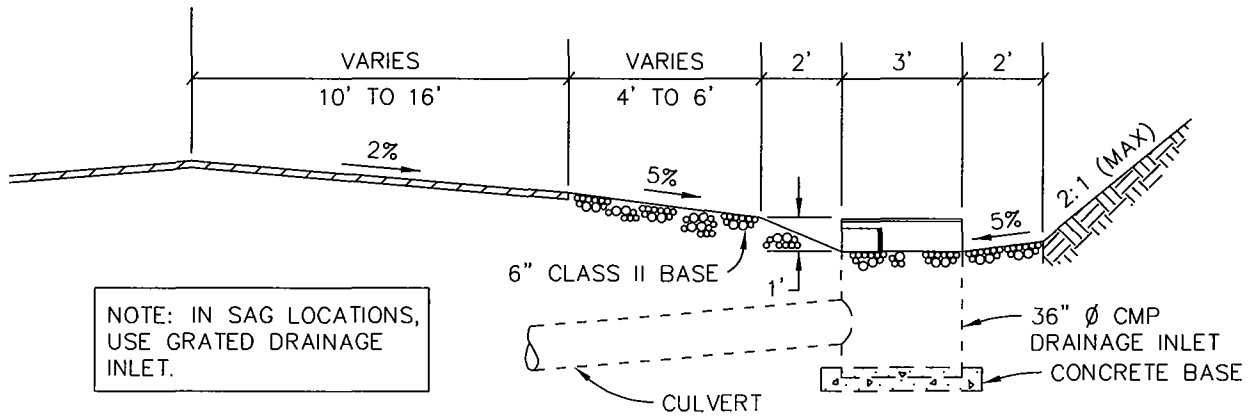
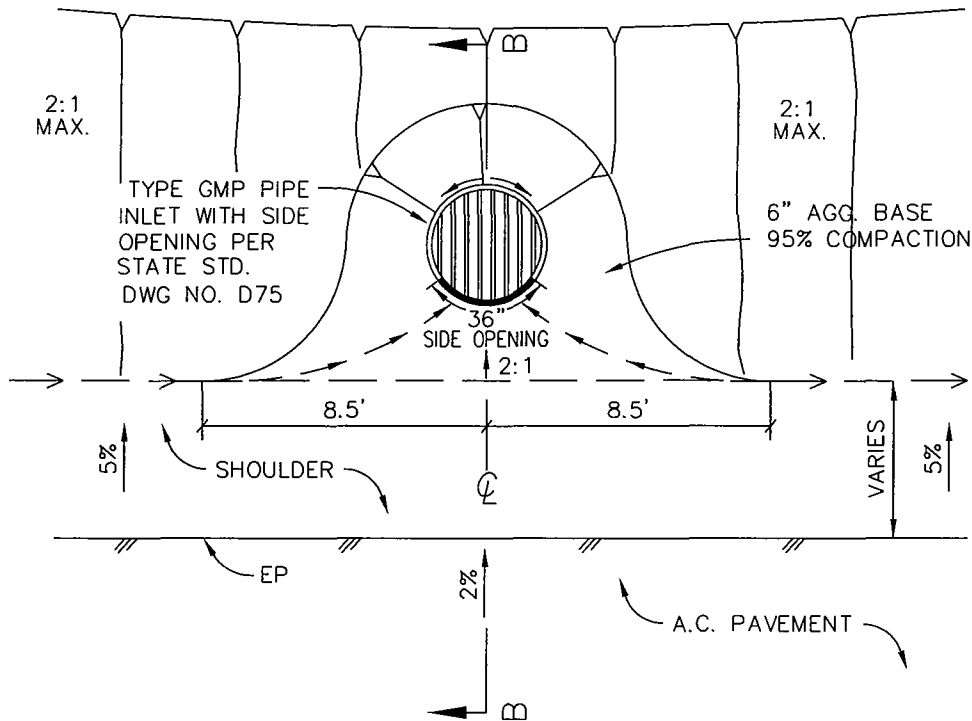
BY

DATE

APPROVED

COUNCIL RESOLUTION NO. 26-92

3/10/92



SECTION B-B

DRAWN BY:  
R.A.L.  
DESIGNED BY:  
S.J.S.  
DATE:  
02/27/92  
FILE NAME:  
AT504.DWG

CITY OF ATASCADERO  
ENGINEERING DEPARTMENT  
  
RURAL DRAINAGE INLET  
ROADS WITHOUT A.C. DIKE

DRAWING NO.  
  
504

REVISIONS

APPROVALS

DESCRIPTIONS

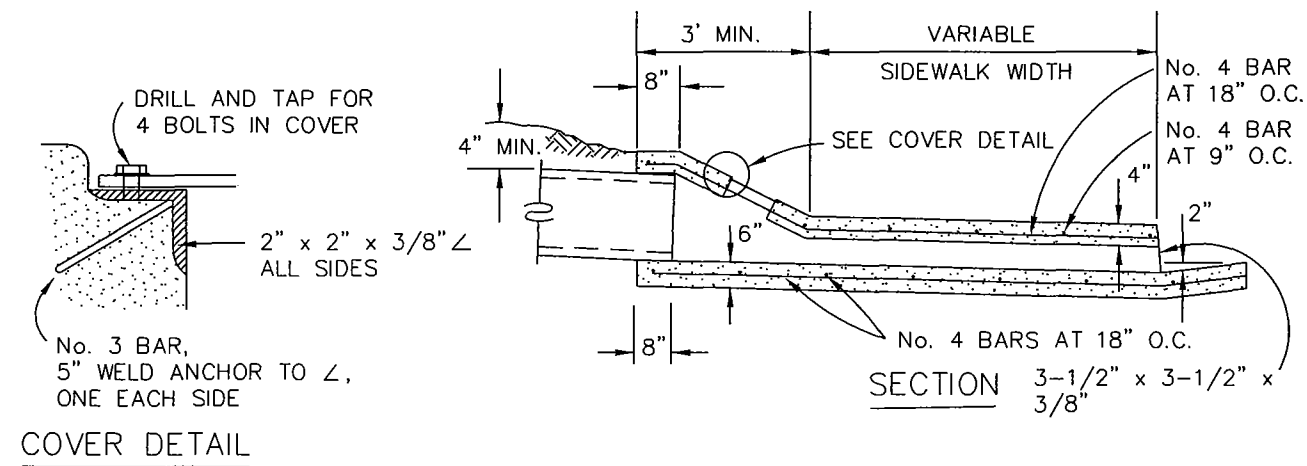
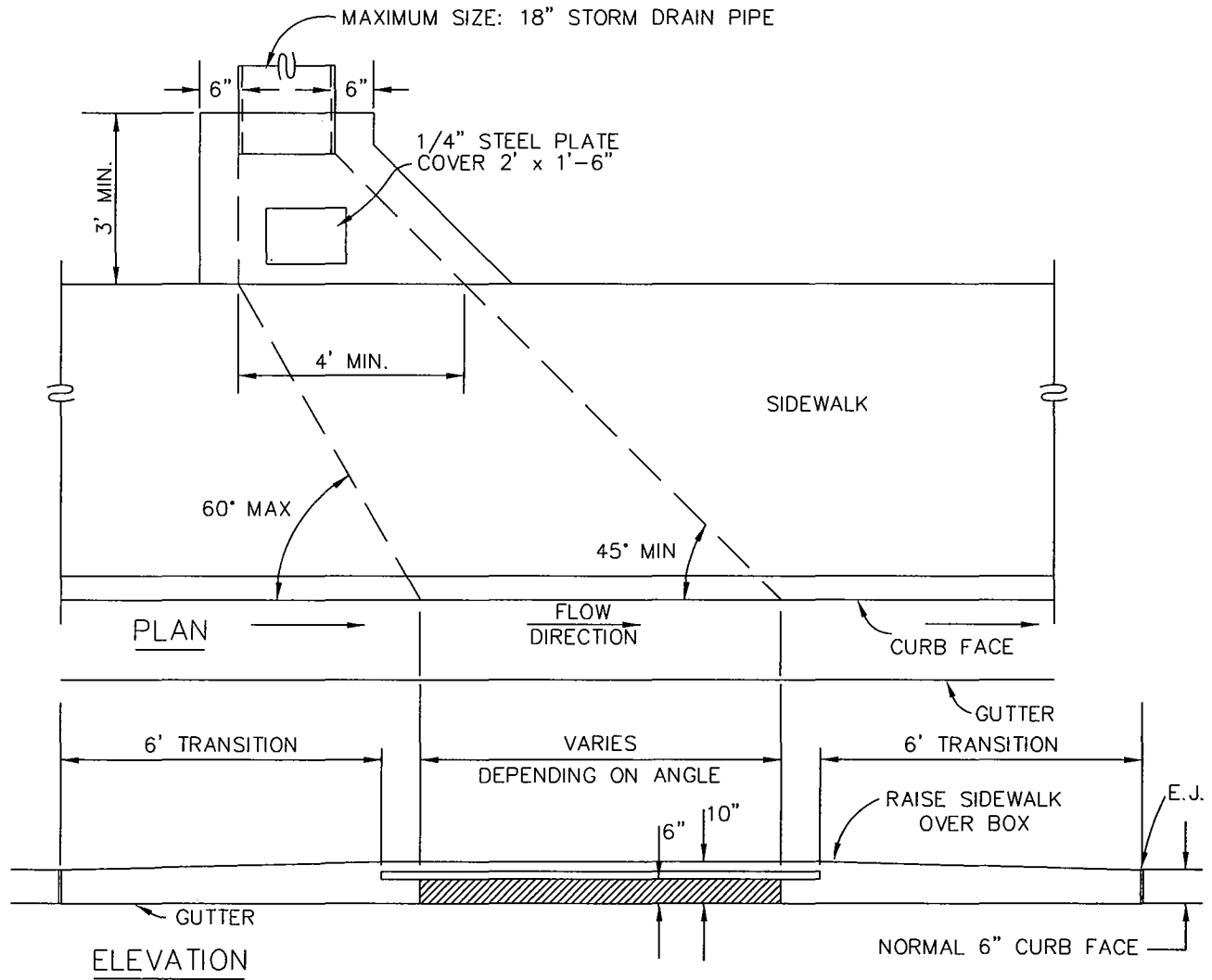
BY

DATE

APPROVED

COUNCIL RESOLUTION NO. 26-92

3/10/92



DRAWN BY:  
R.A.L.  
DESIGNED BY:  
S.J.S.  
DATE:  
2/27/92  
FILE NAME:  
AT509.DWG

CITY OF ATASCADERO  
ENGINEERING DEPARTMENT

SIDEWALK UNDERDRAIN

DRAWING NO.  
  
509

REVISIONS

APPROVALS

DESCRIPTIONS

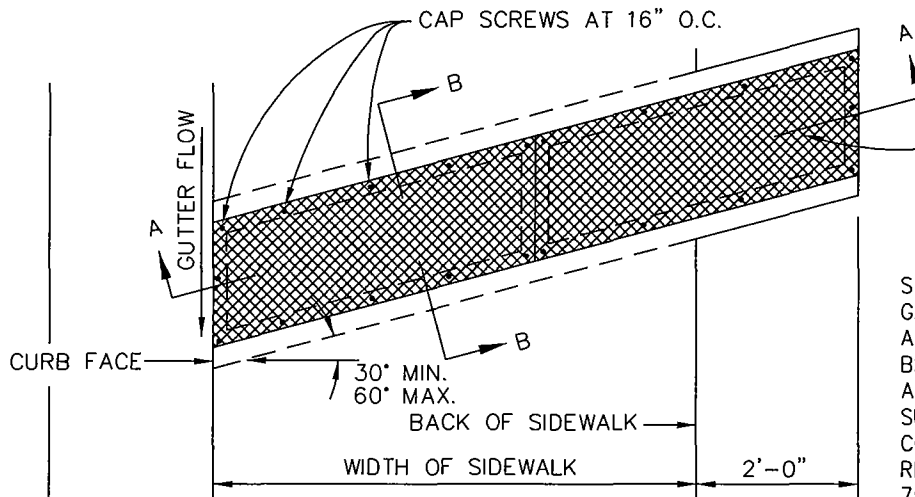
BY

DATE

APPROVED

COUNCIL RESOLUTION NO. 26-92

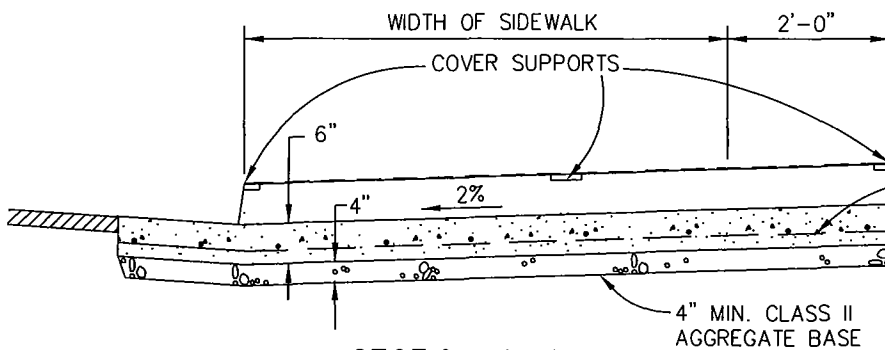
3/10/92



"DIAMOND PLATE" STEEL PLATE, 1/4" THICK, TWO EQUAL LENGTH PLATES.

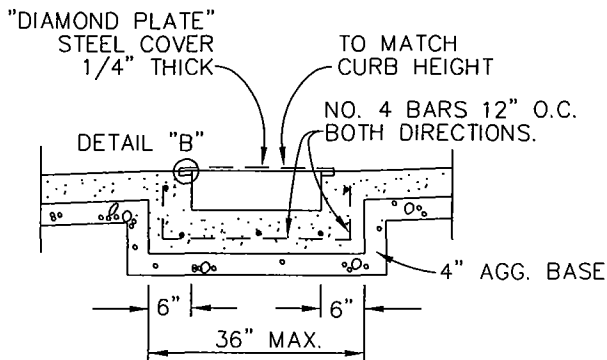
STEEL PLATES SHALL BE GALVANIZED. ALL CORNERS AND SHARP EDGES SHALL BE GROUND SMOOTH. ALL ABRADED AND DAMAGED SURFACES SHALL BE COATED WITH A ZINC-RICH PAINT, AS PER 75-1.05 OF THE STATE STANDARD SPECIFICATIONS.

PLAN

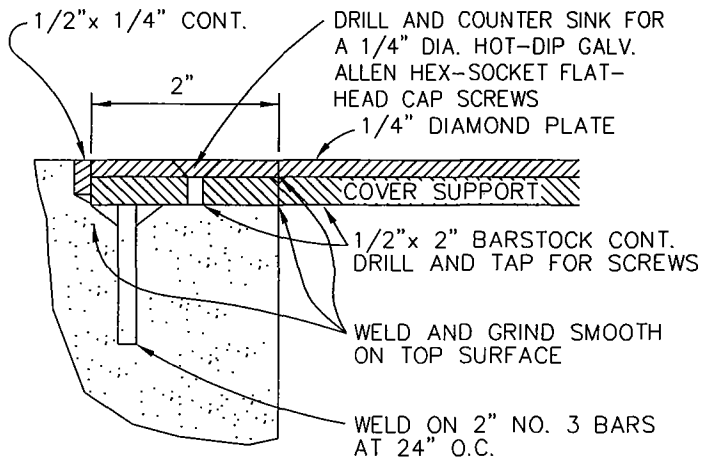


P.C.C. FLOOR WITH NO. 4 BARS BOTH DIRECTIONS, 12" O.C.

SECTION A-A



SECTION B-B



DETAIL "B"

DRAWN BY:  
C.A.C.  
DESIGNED BY:  
S.J.S.  
DATE:  
2/27/92  
FILE NAME:  
AT510.DWG

CITY OF ATASCADERO  
ENGINEERING DEPARTMENT

DRAWING NO.

SIDEWALK UNDERDRAIN,  
STEEL COVERED

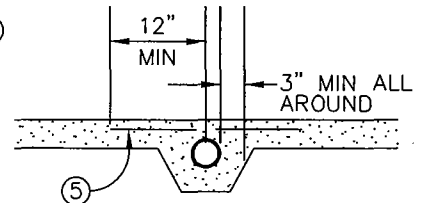
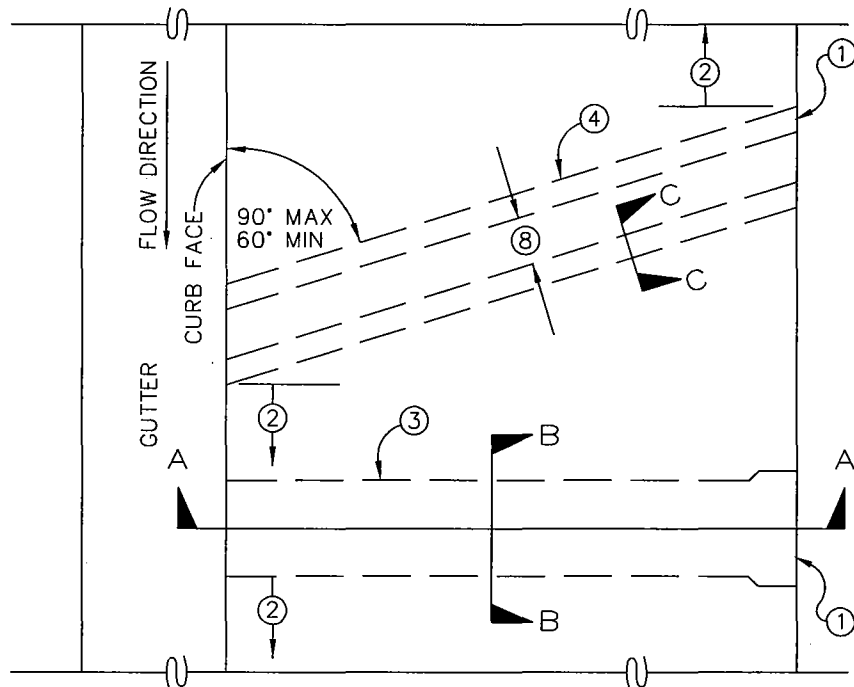
510

REVISIONS

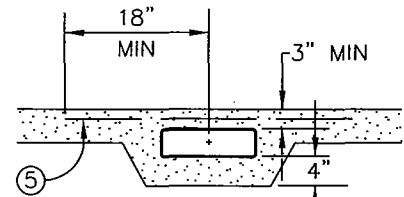
APPROVALS

| DESCRIPTIONS | BY | DATE | APPROVED |
|--------------|----|------|----------|
|              |    |      |          |
|              |    |      |          |
|              |    |      |          |

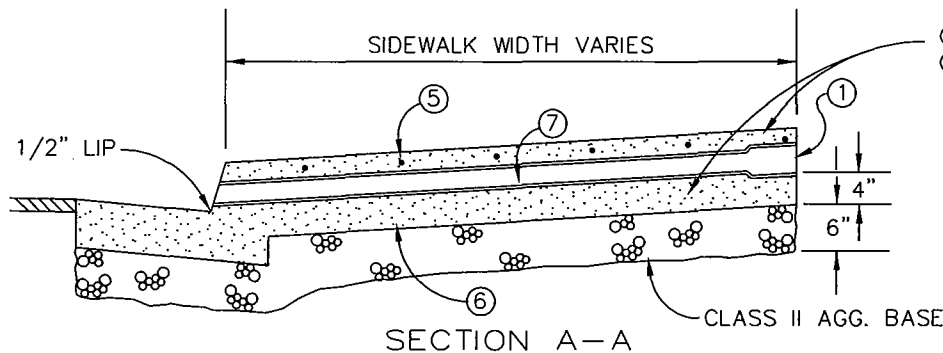
COUNCIL RESOLUTION NO. 26-92 3/10/92



SECTION C-C



SECTION B-B



SECTION A-A

CLASS "B" CONCRETE

CLASS II AGG. BASE

- ① INLET SHALL BE PAVED SWALE, RECTANGULAR CONDUIT OR PIPE(S). MAX. INLET DIAM./HEIGHT SHALL BE CURB HEIGHT MINUS 3 INCHES. INLET CONDUITS LARGER THAN 3" DIAM./HEIGHT MUST BE REDUCED WITH A MANIFOLD OR JUNCTION BOX. A JUNCTION BOX SHALL HAVE ACCESS/CLEANOUT. INLET TYPE SHALL BE APPROVED BY THE CITY ENGINEER.
- ② UNDERDRAIN SHALL NOT BE CLOSER THAN 5 FEET TO A DRIVEWAY OR CURB RETURN.
- ③ RECTANGULAR CAST IRON PIPE - ALHAMBRA A-470, OR APPROVED EQUAL.
- ④ CAST IRON PIPE - 3" MAX. DIAM. (6" CURB) - 4" MAX. DIAM. (8" CURB) GALVANIZED
- ⑤ #4 REBAR AT 12" O.C.
- ⑥ CONCRETE SHALL BE CLASS B
- ⑦ CHANNEL SLOPE SHALL BE NO LESS THAN 2% AND SHALL BE PARALLEL WITH SIDEWALK SURFACE.
- ⑧ MULTIPLE DRAINS SHALL HAVE 6" MIN. CLEARANCE WITH MAX. OF 3 DRAINS PER 10 FEET OF SIDEWALK. DRAINS SHALL NOT EXTEND BEYOND CURB FACE INTO GUTTER.

DRAWN BY:  
R.A.L.  
DESIGNED BY:  
S.J.S.  
DATE:  
2/27/92  
FILE NAME:  
AT511.DWG

CITY OF ATASCADERO  
ENGINEERING DEPARTMENT

SIDEWALK UNDERDRAIN  
WITH PIPES

DRAWING NO.  
  
511