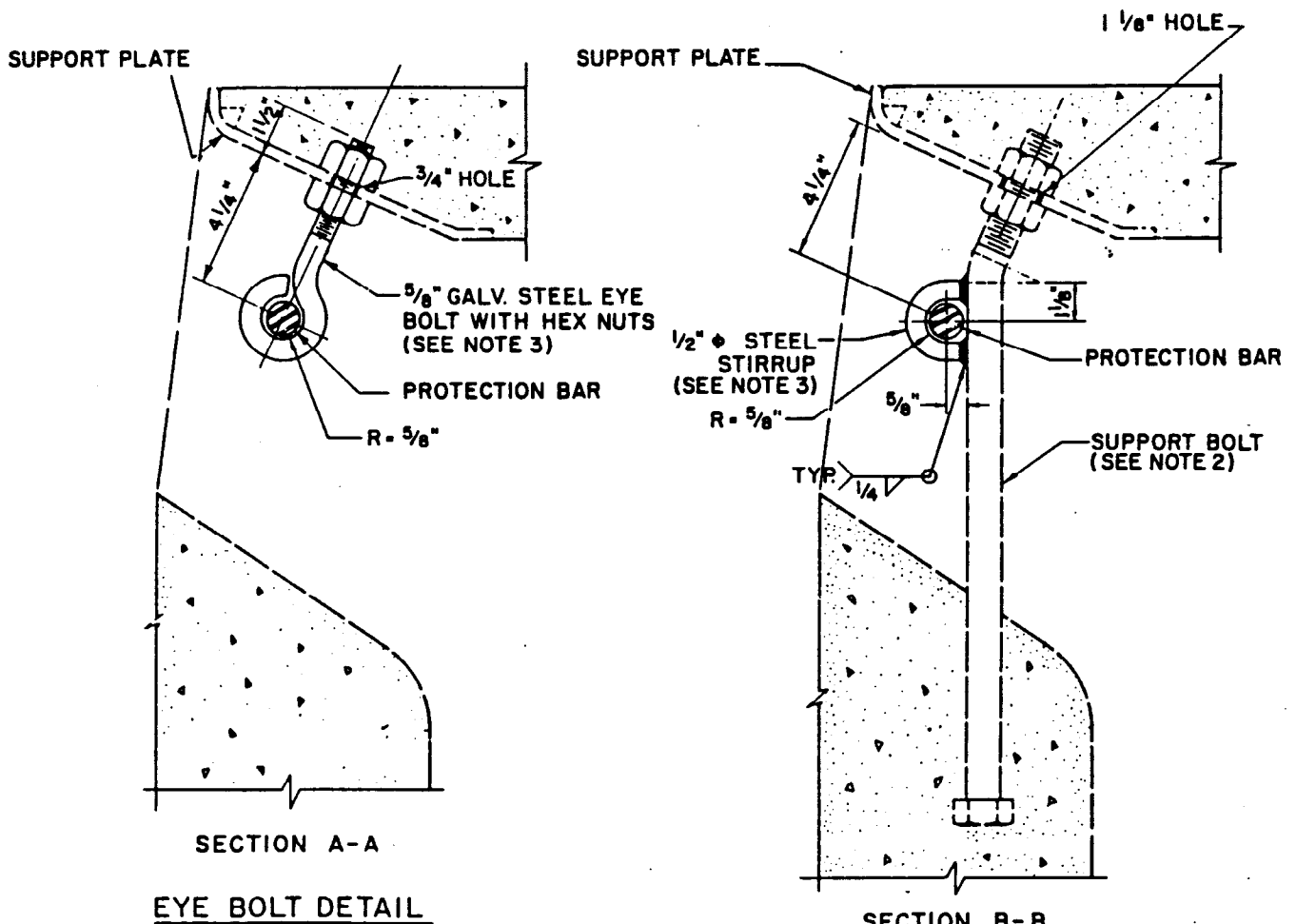


ELEVATION
(PROTECTION BAR AND SUPPORT)



BUREAU OF ENGINEERING

DEPARTMENT OF PUBLIC WORKS

CITY OF LOS ANGELES

CATCH BASIN PROTECTION BAR AND SUPPORT

STANDARD PLAN
S-349-2

SUBMITTED *April 30, 1973*
Clifford W. Albright
ENGINEER OF DESIGN
Robert S. Brown
DEPUTY ENGINEER

APPROVED *May 10, 1973*
Arnold C. Johnson
CITY ENGINEER

DESIGNED BY WRN
DRAWN BY AEF
CHECKED BY LIE

NO		DATE	DESCRIPTION	ENGR OF DESIGN	CITY ENGR
2	12/12/84	CHANGED BAR TO PIPE.		<i>Phyllis King</i>	

SUPERSEDES	REFERENCES
B-3440 IN PART	S-340
B-3654 IN PART	S-351
B-3966	
B-3983	
VAULT INDEX NUMBER B-4080	
SHEET 1 OF 2 SHEETS	

NOTES FOR CATCH BASIN PROTECTION BAR AND SUPPORT



1. PROTECTION BAR
 - A. "SHALL BE 3/4" DIAMETER, SCHEDULE 40, GALVANIZED IRON PIPE CONFORMING TO SECTION 207-9 OF THE STANDARD SPECIFICATIONS.
 - B. SHALL BE THREADED AT EACH END.
 - C. EACH PROTECTION BAR SHALL HAVE NOT LESS THAN ONE GALVANIZED STEEL COUPLING LOCATED APPROXIMATELY IN THE CENTER, BUT NOT CLOSER THAN 6" TO A SUPPORT BOLT.
2. SEE STANDARD PLAN S-340 FOR SUPPORT BOLT LOCATION, SPACING, AND DETAILS.
3. WHENEVER A PROTECTION BAR IS REQUIRED, STIRRUPS SHALL BE WELDED TO ALL SUPPORT BOLTS, AND EYE BOLTS SHALL BE INSTALLED AS SHOWN HEREON.
4. ALL METAL SHALL BE GALVANIZED PER SECTION 210-3 OF THE STANDARD SPECIFICATIONS.