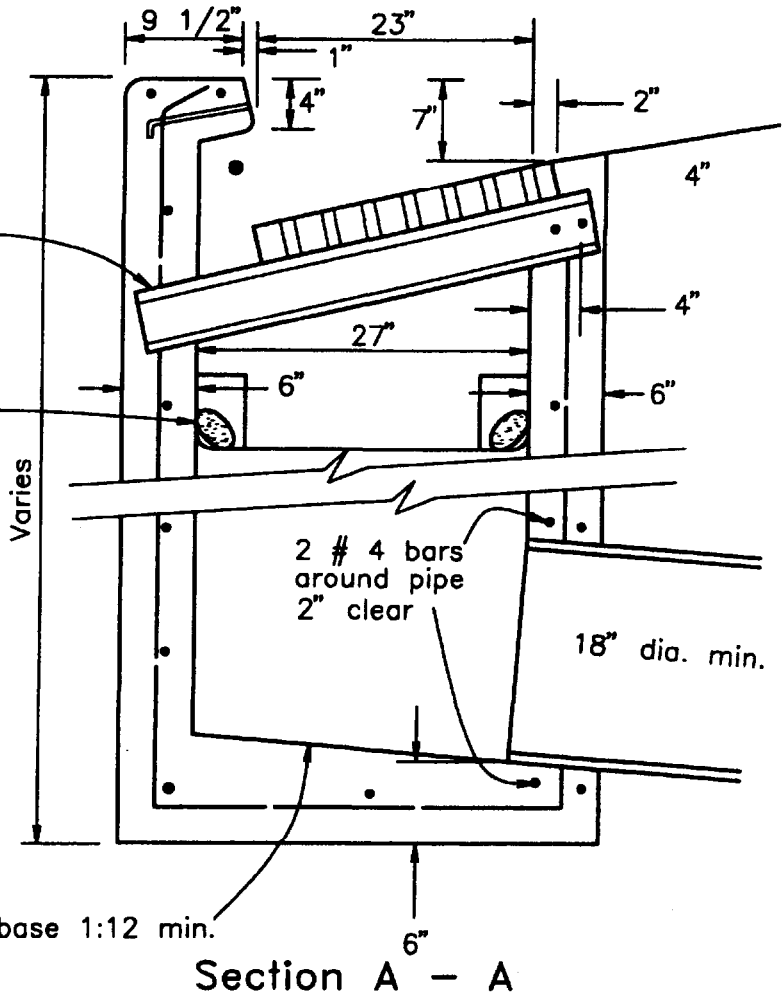


1/4" fillet weld frames to W5 x 18.5 each end

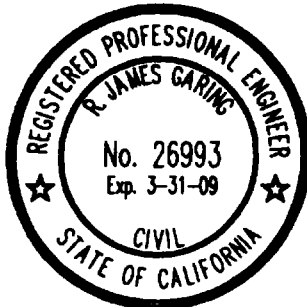
Fossil Filter(tm) Flo-Gard(tm) catch basin insert shown as installed.



See Drawings D.4a D.4.b & D.5

Approved:

[Signature] 29 JUNE 07
 Director of Public Works/
 Designee
[Signature] 29 June 07
 R. James Garing, RCE 26993
 City Engineer



City of Grover Beach

Drop Inlet Details

D.6