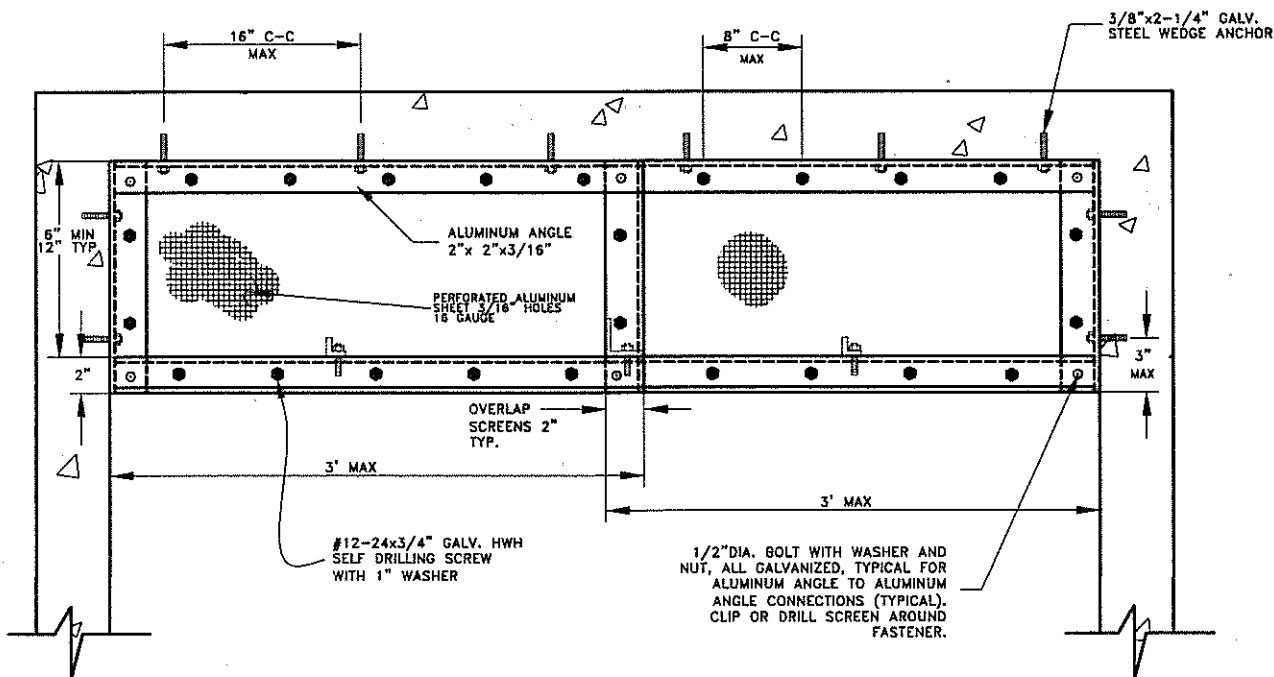


SECTION



**DEFLECTOR DETAIL
(PLAN VIEW)**

CITY OF PASADENA - DEPARTMENT OF PUBLIC WORKS

DRAWN BY:
JOHN SAMARIN

CHECKED BY:
YANNIE WU

SUBMITTED BY:
STEPHEN WALKER

**FABRICATION AND
INSTALLATION OF
CATCH BASIN INSERTS**

APPROVED BY:
Stu D. Wight
ASSISTANT CITY ENGINEER RCE NO. 48650 EXPIRES JUNE 30, 2008

REVISION:
1 UNITS:
ENG.

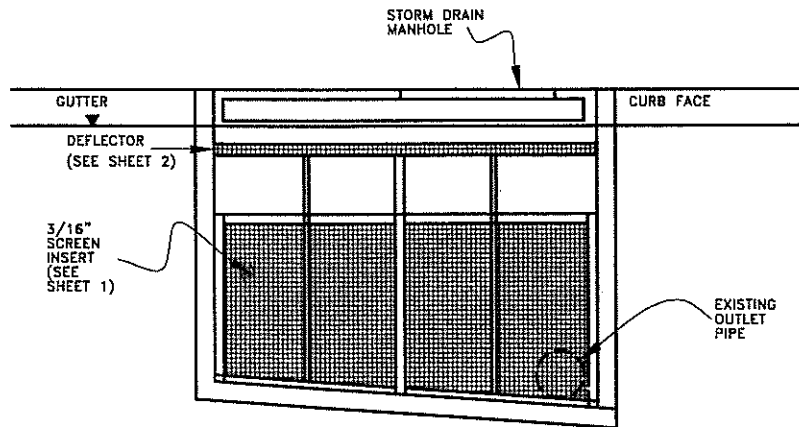
STANDARD PLAN:

S-115

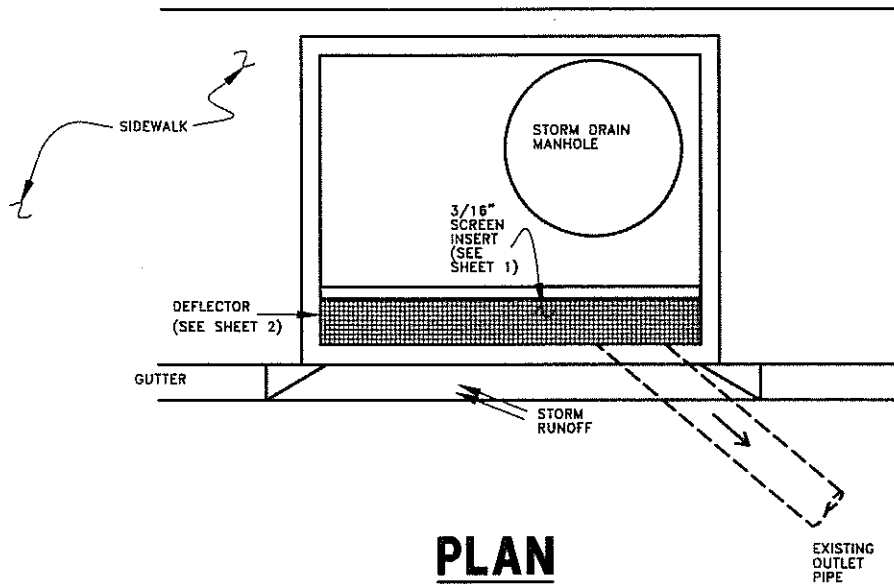
SHEET 2 OF 5

3-115-2-REV1.DWG 04/03/08

4/3/2008
DATE



PROFILE



PLAN

TYPE 1 INSERT LOCATION

NOTE: FOR CURB OPENING WIDTHS EQUAL TO OR LESS THAN 10 FEET, OR AS APPROVED BY THE ENGINEER.

CITY OF PASADENA - DEPARTMENT OF PUBLIC WORKS

DRAWN BY:
JOHN SAMARIN

CHECKED BY:
YANNIE WU

SUBMITTED BY:
STEPHEN WALKER

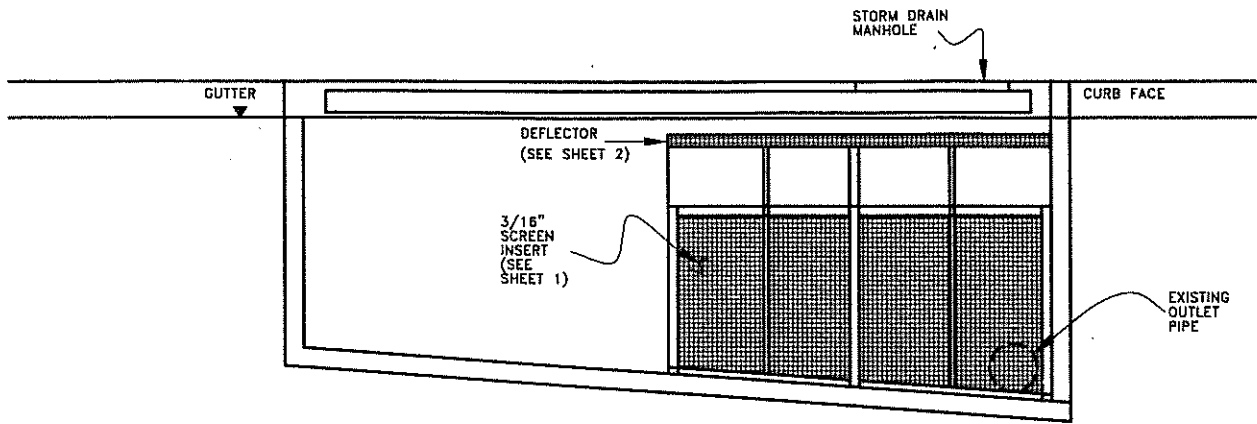
**FABRICATION AND
INSTALLATION OF
CATCH BASIN INSERTS**

APPROVED BY:
St. A. Will
ASSISTANT CITY ENGINEER RCE NO. 46650 EXPIRES JUNE 30, 2008

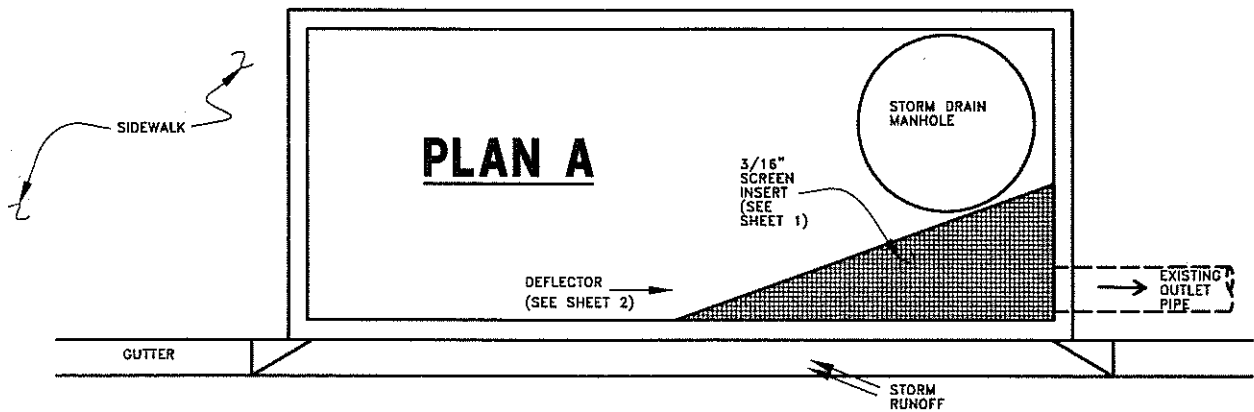
4/3/2008
DATE

REVISION: 1 UNITS: ENG.

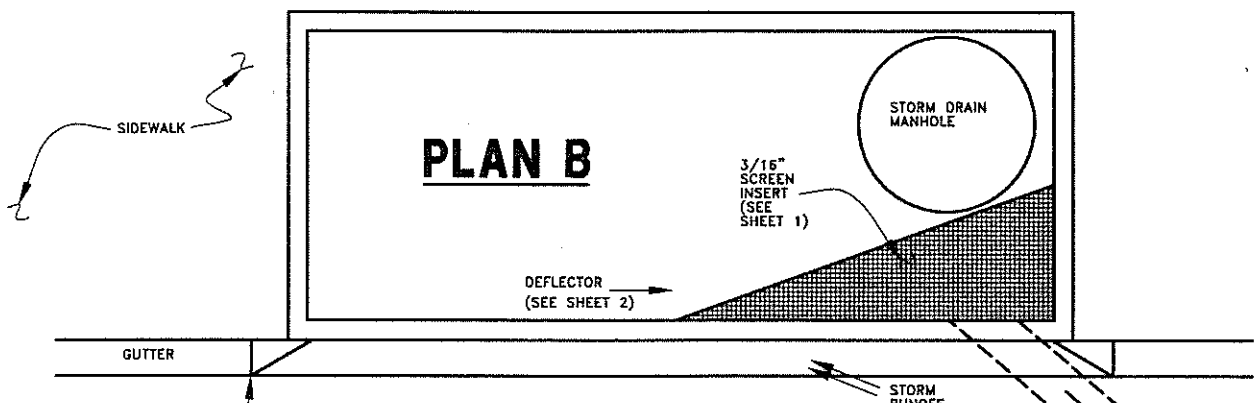
STANDARD PLAN:
S-115
SHEET 3 OF 5
3-115-3-REV1.DWG 04/03/08



PROFILE



PLAN A



PLAN B

NOTE: FOR CURB OPENING WIDTHS MORE THAN 10 FEET, OR AS APPROVED BY THE ENGINEER.

TYPE 2 INSERT LOCATION

CITY OF PASADENA - DEPARTMENT OF PUBLIC WORKS

DRAWN BY:
JOHN SAMARIN

CHECKED BY:
YANNIE WU

SUBMITTED BY
STEPHEN WALKER

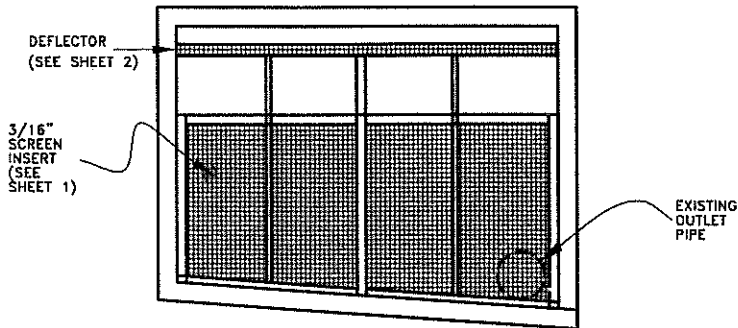
FABRICATION AND INSTALLATION OF CATCH BASIN INSERTS

APPROVED BY:
Stu d. Wight
ASSISTANT CITY ENGINEER RCE NO. 48660 EXPIRES JUNE 30, 2008

DATE
4/3/2008

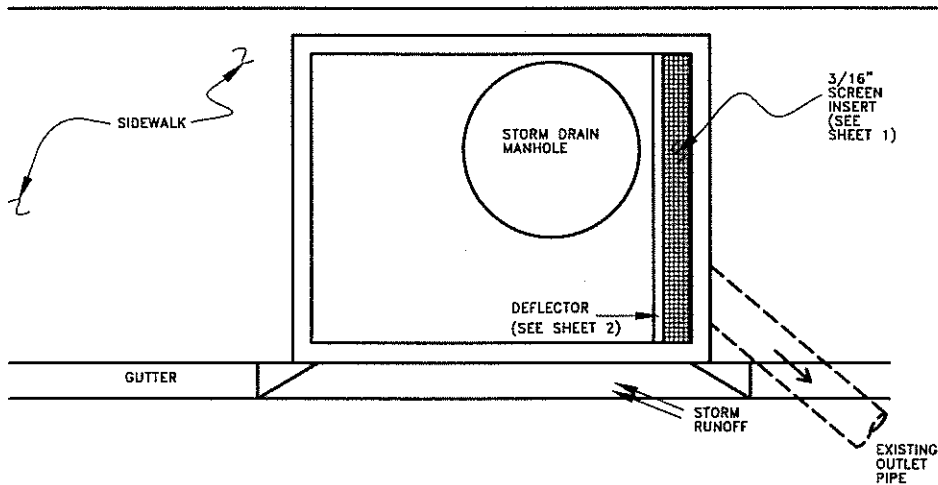
REVISION: 1 UNITS: ENG.

STANDARD PLAN:
S-115
SHEET 4 OF 5
S-115-4-REV1.DWG 04/03/08



PROFILE

(SEE SHEET 2 FOR DETAIL)



PLAN

TYPE 3 INSERT LOCATION

CITY OF PASADENA - DEPARTMENT OF PUBLIC WORKS

DRAWN BY:
JOHN SAMARIN

CHECKED BY:
YANNIE WU

SUBMITTED BY:
STEPHEN WALKER

FABRICATION AND INSTALLATION OF CATCH BASIN INSERTS

APPROVED BY:

St. A. Wright

ASSISTANT CITY ENGINEER RCE NO. 4860 EXPIRES JUNE 30, 2008

4/3/2008
DATE

REVISION: 1
UNITS: ENG.

STANDARD PLAN:

S-115

SHEET 5 OF 5

S-115-S-REV1.DWG 04/05/08