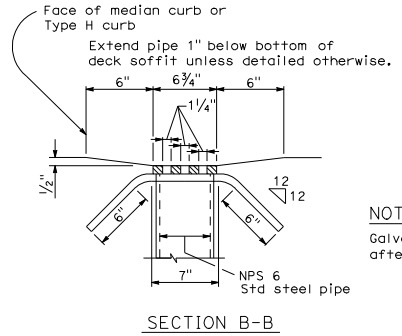
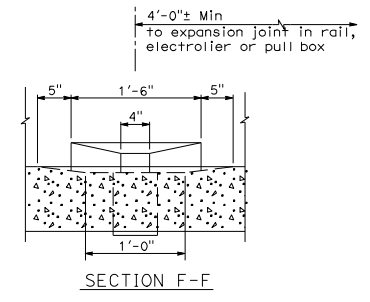
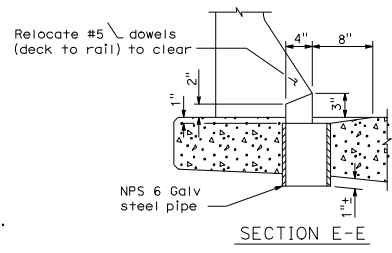
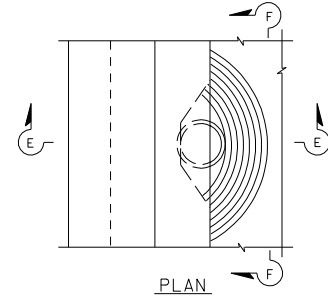


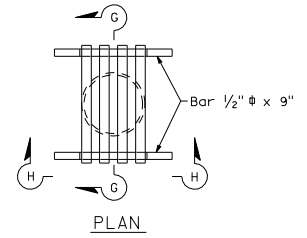
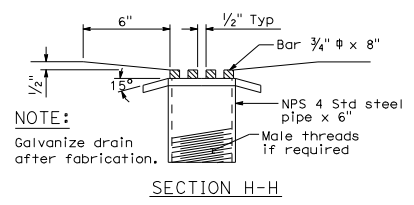
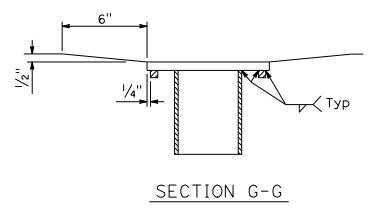
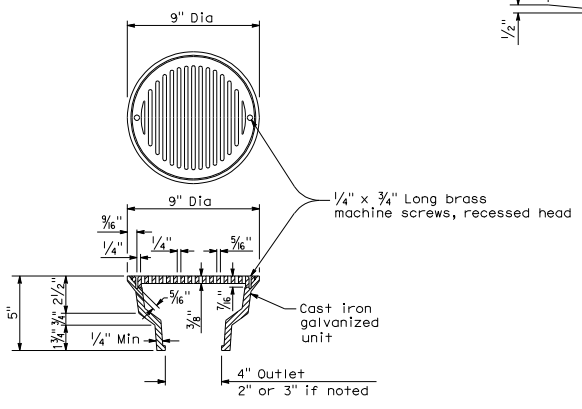
DRAIN - TYPE "A" DETAIL 7-1



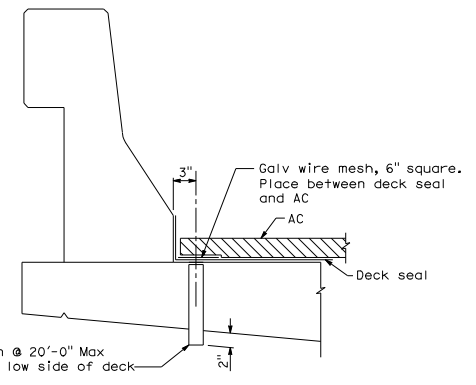
NOTE:
Galvanize drain after fabrication.



DRAIN - TYPE "B" DETAIL 7-3
For Type 25 barrier railing



PEDESTRIAN STRUCTURE DRAIN DETAIL 7-5



DECK BLEEDER DRAIN DETAIL 7-6

STATE OF CALIFORNIA
DEPARTMENT OF TRANSPORTATION
DECK DRAINS
NO SCALE

B7-5

| DIST | COUNTY | ROUTE | POST MILES TOTAL PROJECT | SHEET NO. | TOTAL SHEETS |
|------|--------|-------|--------------------------|-----------|--------------|
| | | | | | |

REGISTERED CIVIL ENGINEER

C. J. Sims
No. C46471
Exp. 6-30-07
REGISTERED PROFESSIONAL ENGINEER
CIVIL
STATE OF CALIFORNIA

May 1, 2006
PLANS APPROVAL DATE

The State of California or its officers or agents shall not be responsible for the accuracy or completeness of electronic copies of this plan sheet.

To get to the Caltrans web site, go to <http://www.dot.ca.gov>