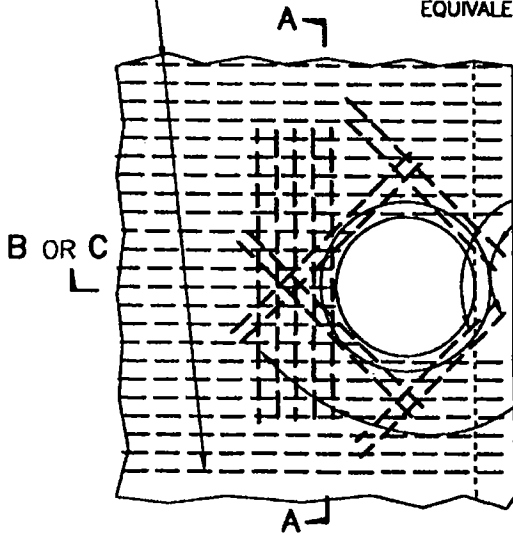
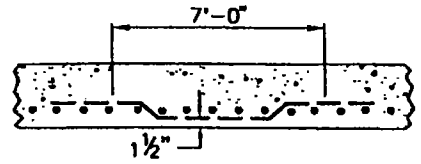


SIZE & SPACING OF STEEL AS SHOWN ON PLAN, EXCEPT THAT 5 BARS ON EACH SIDE OF SHAFT SHALL BE NOT SMALLER THAN #5 BARS, 4" O.C. OR EQUIVALENT



PLAN
(SHAFT NOT SHOWN)



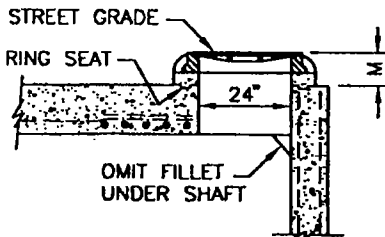
SECTION A-A

#5 BARS
5' LONG, 4" O.C.

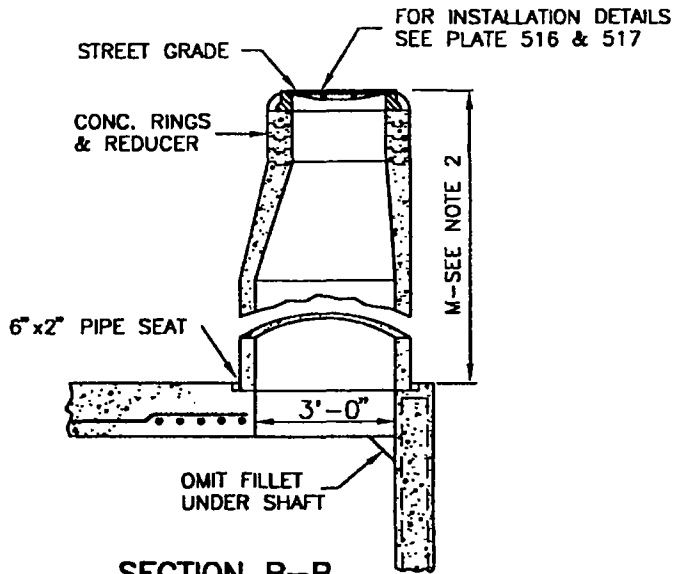
5 BARS 7' LONG, 4" O.C., OF SIZE SHOWN FOR TRANSVERSE STEEL, BUT NOT SMALLER THAN #5 BARS. WARP THESE BARS UNDER BARS THAT HAVE BEEN CUT FOR SHAFT OPENING.

REV.	APPR. BY	DATE

REV.	APPR. BY	DATE



SECTION C-C
SEE NOTE 2



SECTION B-B
MANHOLE FOR
BOX SECTION STORM DRAIN

NOTES:

1. FOR DETAILS OF ACCESS SHAFT SEE PLATE No. 516 & 517.
2. DEPTH M: WHEN DEPTH M FROM STREET GRADE TO TOP OF THE BOX IS LESS THAN 2'-10 1/2" FOR PAVED STREETS OR 3'-6" FOR UNPAVED STREETS, CONSTRUCT SHAFT PER SECTION C-C.

	MANHOLE No. 3 (IN CONCRETE BOX STORM DRAIN)		STANDARD PLAN 2002
	DRAWN: STAFF	CKD.: STAFF	PLATE 515
	Department of Public Works		APPR. Granville M. Bowman