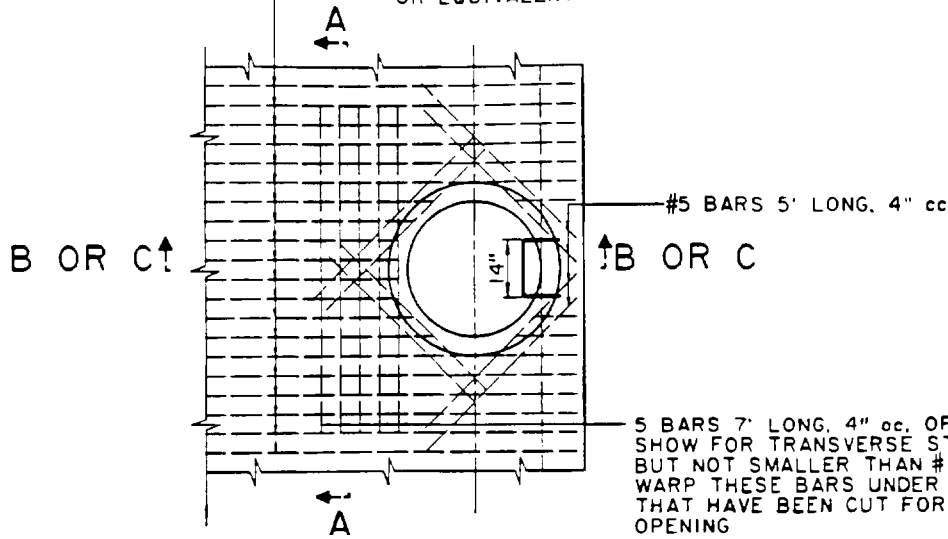
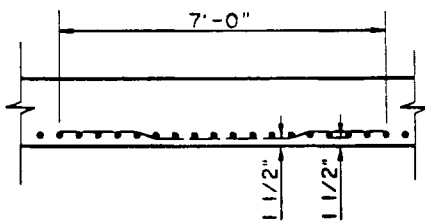


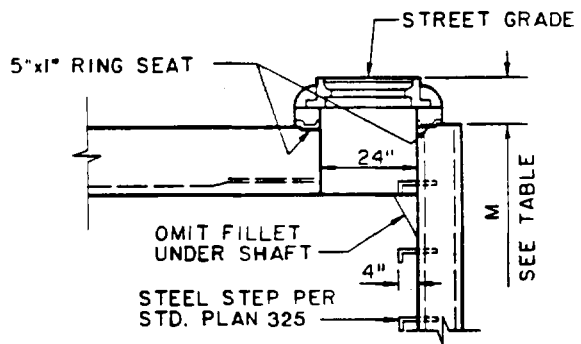
SIZE AND SPACING OF STEEL AS SHOWN ON PLAN.  
EXCEPT THAT 5 BARS ON EACH SIDE OF SHAFT  
SHALL BE NOT SMALLER THAN #5 BARS, 4" oc  
OR EQUIVALENT



**PLAN**  
(SHAFT NOT SHOWN)

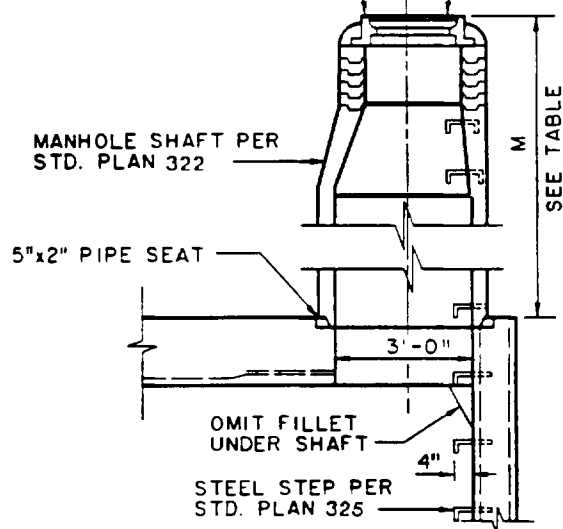


**SECTION A - A**



**SECTION C - C**

MANHOLE FRAME AND COVER PER STD. PLAN 324



**SECTION B - B**

TABLE OF VALUES FOR M (SEE NOTE 1)

SECTION	PAVED STREET		UNPAVED STREET	
	MAX.	MIN.	MAX.	MIN.
B - B	-	2'-10 1/2"	-	3'-6"
C - C	(SEE NOTE 1)	0'-8 1/2"	(SEE NOTE 1)	1'-3"

**CITY OF RANCHO CUCAMONGA, CALIFORNIA**

APPROVED BY:

*W. M. ...* 6-1-92  
CITY ENGINEER  
R.C.E. 24953

DATE

MANHOLE NO. 3

USE WITH STANDARD SPECIFICATIONS FOR PUBLIC WORKS CONSTRUCTION

STANDARD PLAN

320

SHEET 1 OF 2

NOTES

1. WHEN DEPTH M FROM STREET GRADE TO THE TOP OF THE BOX IS LESS THAN 2'-10 1/2" FOR PAVED STREETS OR 3'-6" FOR UNPAVED STREETS, CONSTRUCT SHAFT PER SECTION C-C.
2. STATIONS OF MANHOLES SHOWN ON PLANS APPLY AT CENTER LINE OF SHAFT. ELEVATIONS ARE SHOWN AT CENTER LINE OF SHAFT.
3. REINFORCEMENT SHALL CONFORM TO ASTM A 615, GRADE 40, AND SHALL TERMINATE 1 1/2" CLEAR OF CONCRETE SURFACES UNLESS OTHERWISE SHOWN.
4. STEPS SHALL CONFORM TO STANDRD PLAN 325. UNLESS OTHERWISE SHOWN STEPS SHALL BE SPACED 14" TO 15" ON CENTER. THE LOWEST STEP SHALL NOT BE MORE THAN 2' ABOUT THE FLOOR.
5. MANHOLE FRAME AND COVER SHALL CONFORM TO STANDARD PLAN 324. UNLESS OTHERWISE SHOWN.
6. MANHOLE SHAFT SHALL CONFORM TO STANDARD PLAN 322. UNLESS OTHERWISE SHOWN.

THE FOLLOWING STANDARD PLANS ARE INCORPORATED HEREIN:

- 322 STANDARD MANHOLE SHAFT
- 324 24-INCH MANHOLE FRAME AND COVER
- 325 STEEL STEPS

**CITY OF RANCHO CUCAMONGA, CALIFORNIA**

APPROVED BY: <i>W. J. Neil</i> 6/1/72 CITY ENGINEER R.C.E. 24953	MANHOLE NO. 3  USE WITH STANDARD SPECIFICATIONS FOR PUBLIC WORKS CONSTRUCTION	STANDARD PLAN  320  SHEET 2 OF 2
---	---	--