

NOTE - Unless otherwise indicated:

1. Railing shall conform to horizontal and vertical alignment. Posts and balusters shall be vertical with a maximum deviation not to exceed $\frac{1}{2}$ " in 10'.
2. Railing and all parts and fittings shall be galvanized after fabrication.
3. Space posts to clear expansion joints by 9" min. to $\frac{1}{2}$ " of post. Rail joints at expansion joints in the deck shall provide same allowance for movement with corresponding increase in length of sleeve.
4. Railing on bridge wingwalls to be placed after walls are backfilled.

DRAWN BY: G. ANDERSON, 12-67. CHECKED BY: D. BROWN, 12-67. REV. 1-69: CHANGED 10" TO 10' IN NOTE 1.

LOS ANGELES COUNTY ROAD DEPARTMENT

HANDRAIL DETAILS

STANDARD PLAN

APPROVED

J. P. Mosher

ROAD COMMISSIONER

10 Dec 67

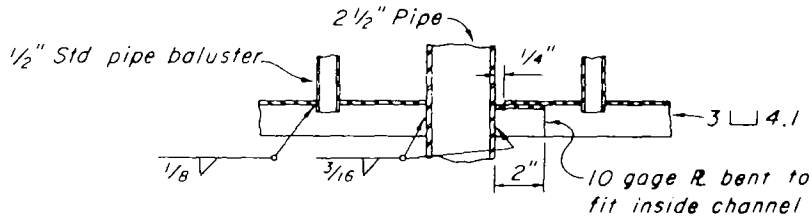
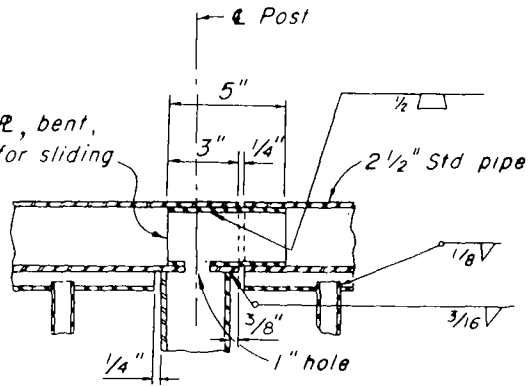
DATE

106-01

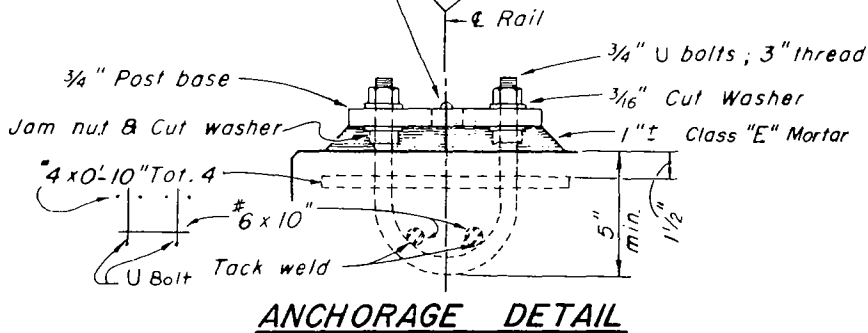
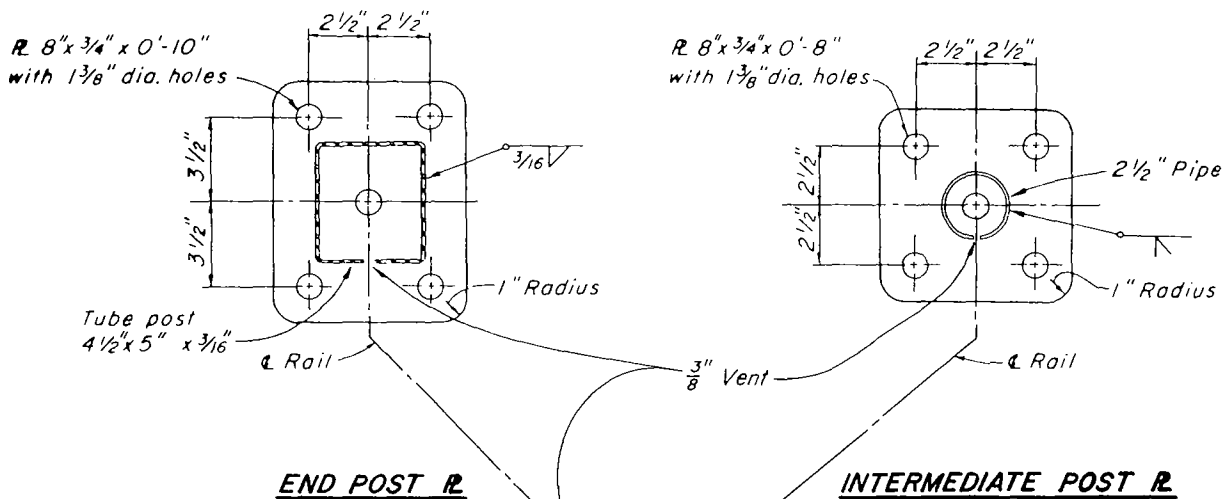
PAGE 1 OF 2

REVISED 1-69

Sleeve formed of 10 gage R, bent, welded, and ground smooth for sliding fit inside of rail.



SECTION D-D



DRAWN BY: G. ANDERSON, 12-67. CHECKED BY: D. BROWN, 12-67. REV. 11-69 CHANGED MORTAR FROM 'D' TO 'E'

LOS ANGELES COUNTY ROAD DEPARTMENT

HANDRAIL DETAILS

STANDARD PLAN

106-01

PAGE 2 OF 2

REVISED 11-69