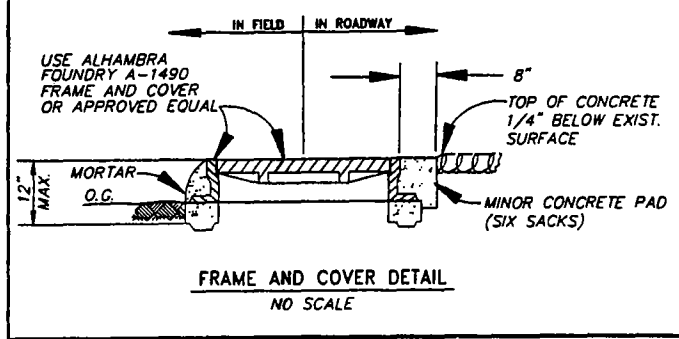
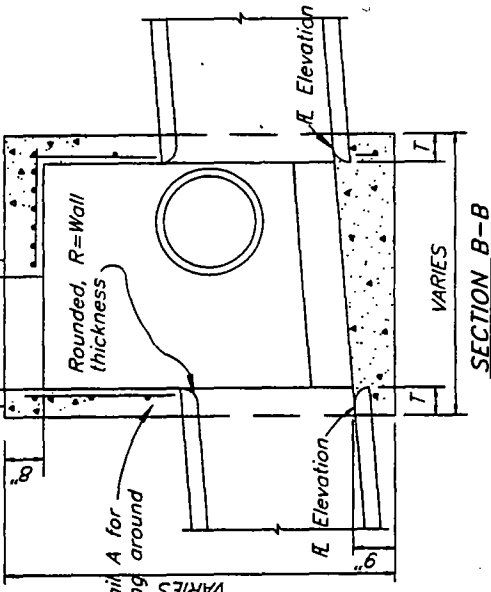
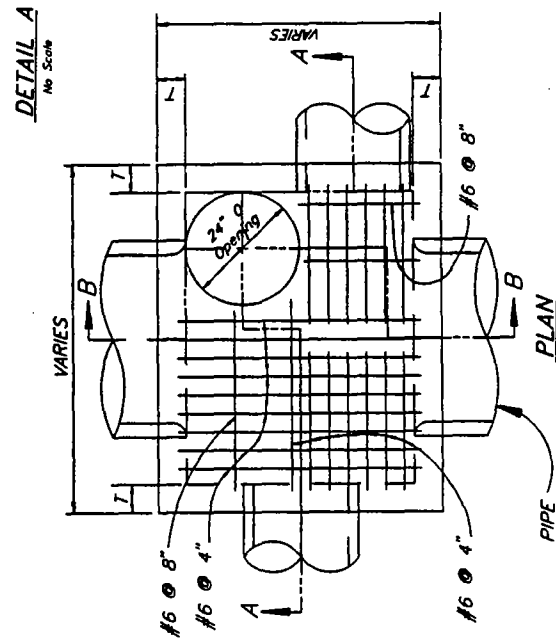
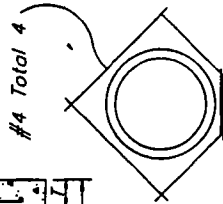
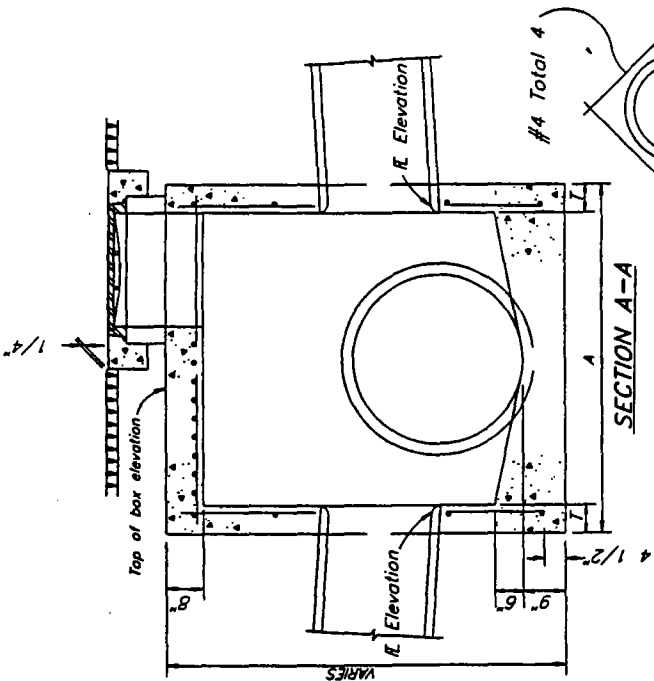


NOTES:

1. All concrete shall be Minor Concrete.
2. Wall reinforcing not required when $H = 8'$ or less and the unsupported length of all walls = 7' or less. Walls exceeding either limit shall be reinforced with #4 bars at 18" centers placed 1 1/2" clear to inside of box unless otherwise shown.
3. Galvanizing - see Standard Specifications or Special Provisions.
4. $T = 6"$ when $H = 8'$ or less and the unsupported length of all walls = 7' or less. Walls exceeding either limit shall have $T = 8"$.
5. Location of frame and cover to be determined by the Engineer.
6. Precast alternative is optional. See section 51-1.02 of Standard Specifications.

Traffic frame and cover set to grade as directed by the Engineer. Cover and frame machined to fit. Cover to have radial black tread, frame to have flange down, approximate weight-315 pounds. See note #5



TYPE "B" MINOR STRUCTURE

PLOTTED: 08/18/1995

ACAD FILE #23\0-4

Revisions	DATE:
Date Desc	8-18-1995
	DESIGNED BY: R.J.L.
	DRAWN BY: T.A./K.S.
	CHECKED BY: C.L.

COUNTY OF KERN
STATE OF CALIFORNIA
**DEVELOPMENT
STANDARD**

**TYPE "B" MINOR
STRUCTURE-
JUNCTION BOX**

PLATE NO.
D-4