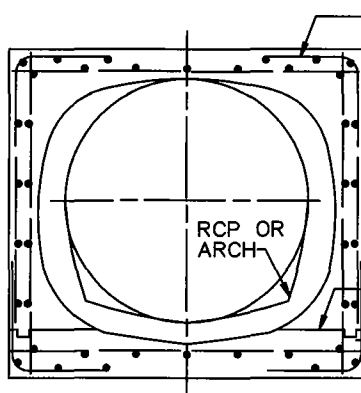
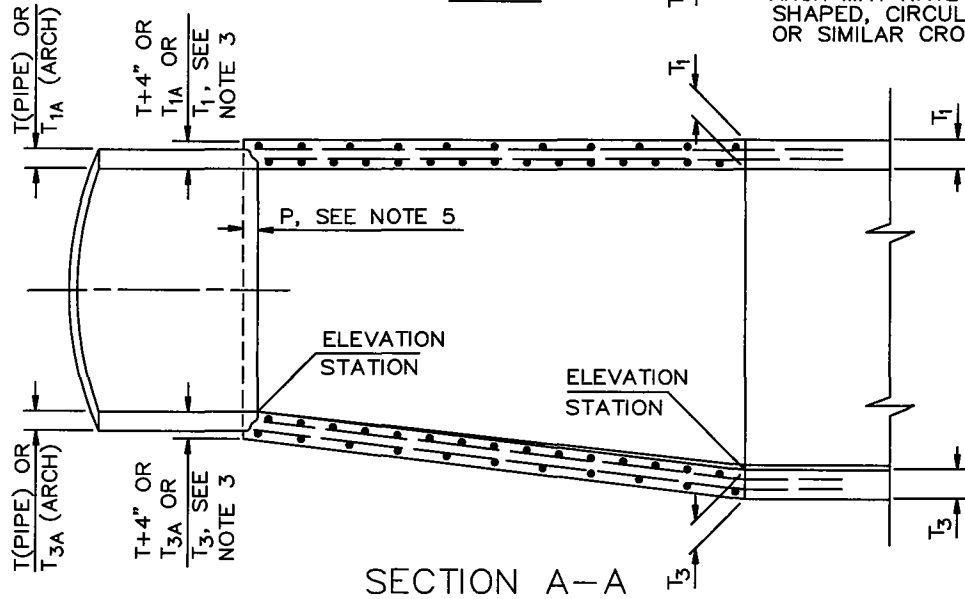


* ARCH MAY HAVE A HORSESHOE-SHAPED, CIRCULAR, ELLIPTICAL OR SIMILAR CROSS SECTION.



STEEL PATTERN SHOWN IS PICTORIAL ONLY, SEE NOTES 2 AND 7

OPTIONAL CONSTRUCTION JOINT:
 RCB OR ARCH TO RCP USE CONST JOINT OF RCB OR ARCH.
 RCB TO ARCH, USE CONST JOINT OF RCB

STANDARD PLANS FOR PUBLIC WORKS CONSTRUCTION

PROMULGATED BY THE
 PUBLIC WORKS STANDARDS INC.
 GREENBOOK COMMITTEE
 1992
 REV. 1995, 2009

**TRANSITION STRUCTURE
 RCB TO PIPE**

STANDARD PLAN

342-2

USE WITH STANDARD SPECIFICATIONS FOR PUBLIC WORKS CONSTRUCTION

SHEET 1 OF 2