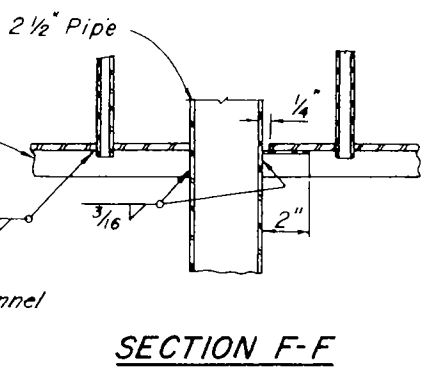
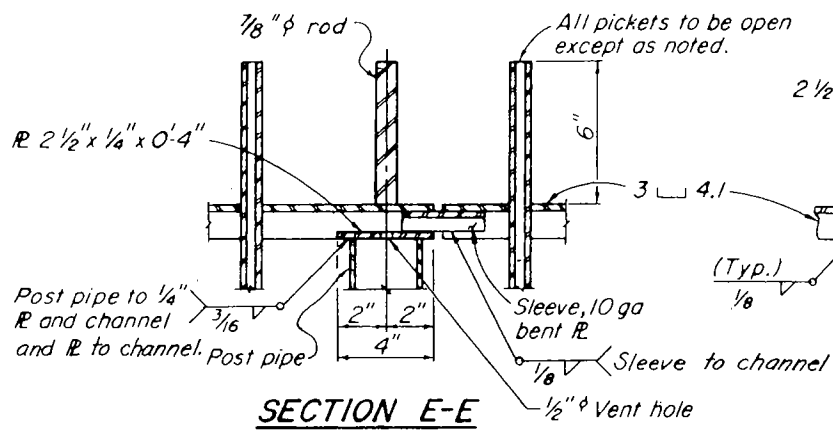
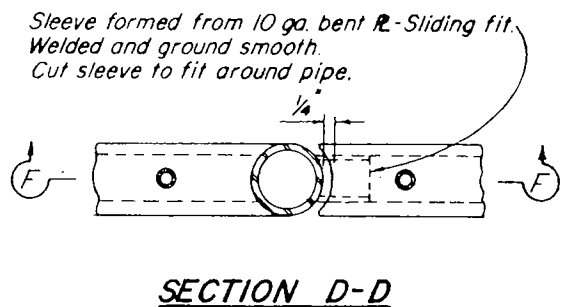
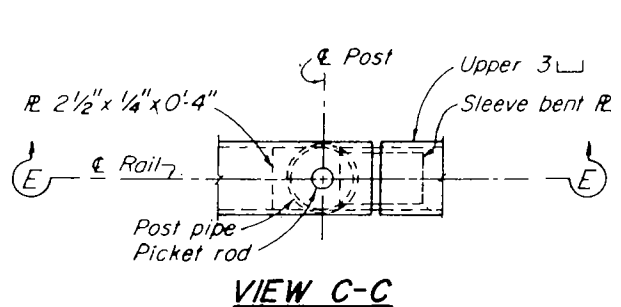
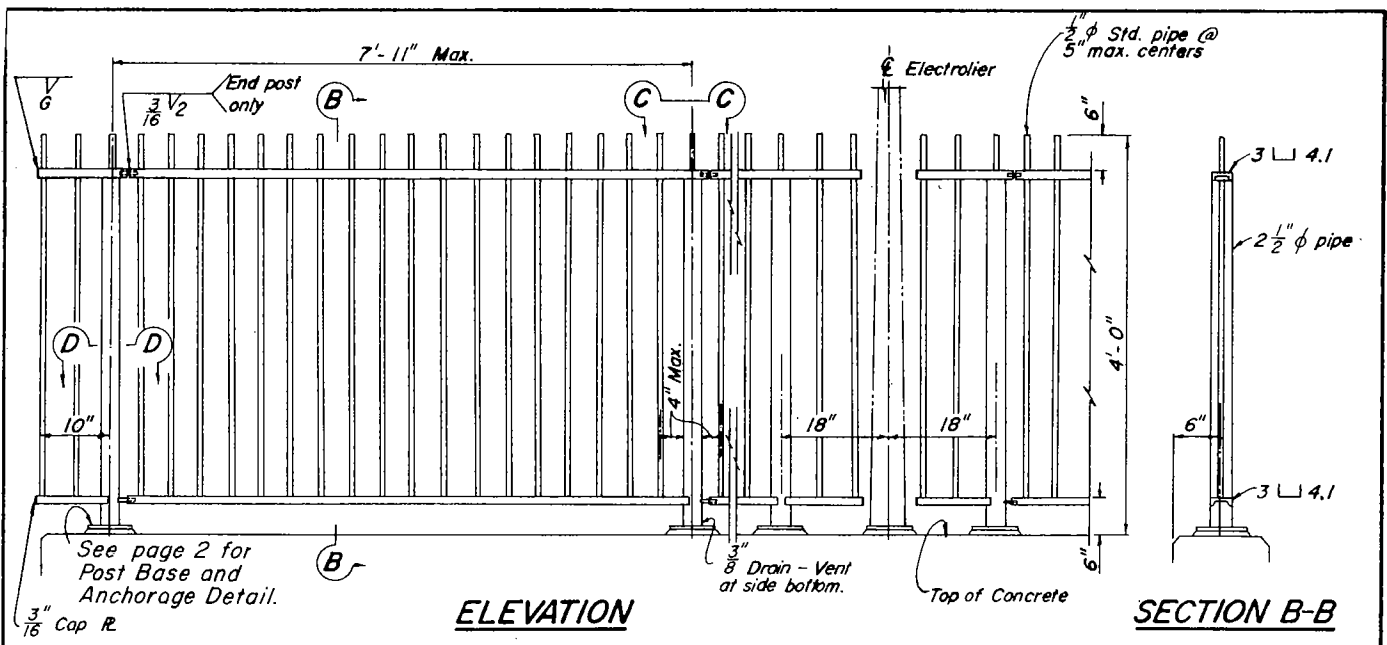


DRAWN BY: G. ANDERSON, 12-67. CHECKED BY: D. BROWN, 12-67.
 REV. 1-69: CHANGED UPPER AND LOWER SLEEVES.
 REV. 11-69: CHANGED ANCHORAGE DETAIL NOTE.
 REV. 7-73: ADDED CAP R.
 REV. 7-76: ADDED ELECTROLIER



NOTE - Unless otherwise indicated:

1. Space posts to clear expansion jts. by 9" min. to E of post. At expansion jts. in deck, rail jts. shall provide same allowance for movement with corresponding increase in length of sleeve.
2. Railing shall conform to horizontal and vertical alignment. Posts and balusters shall be vertical with a maximum deviation not to exceed 1/4" in 10'.
3. Railing and all parts and fittings shall be galvanized after fabrication.

LOS ANGELES COUNTY ROAD DEPARTMENT

PICKET RAILING

STANDARD PLAN

104-01

APPROVED

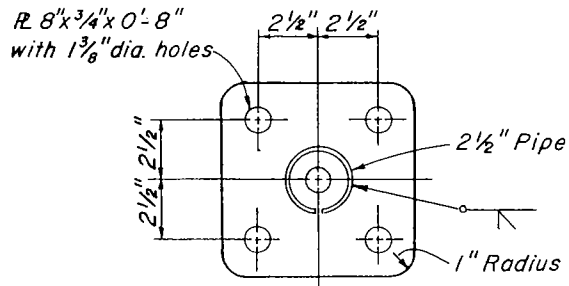
D. J. Mosher

1 Dec 67

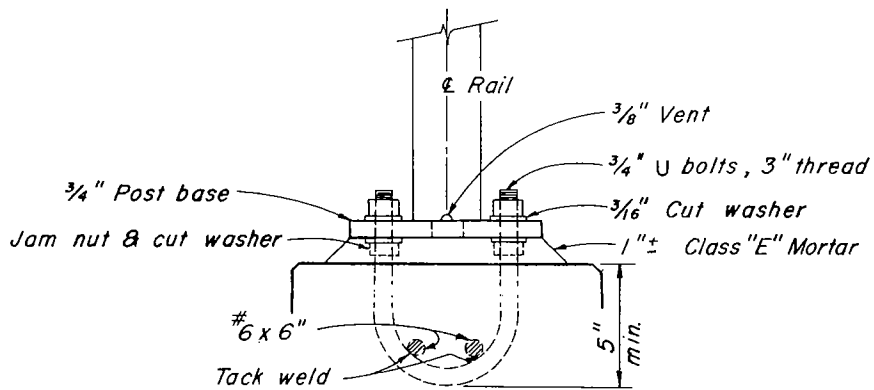
ROAD COMMISSIONER

DATE

PAGE 1 OF 2



POST BASE



ANCHORAGE DETAIL

LOS ANGELES COUNTY ROAD DEPARTMENT

STANDARD PLAN

104-01

PAGE 2 OF 2

APPROVED _____ ROAD COMMISSIONER _____ DATE _____