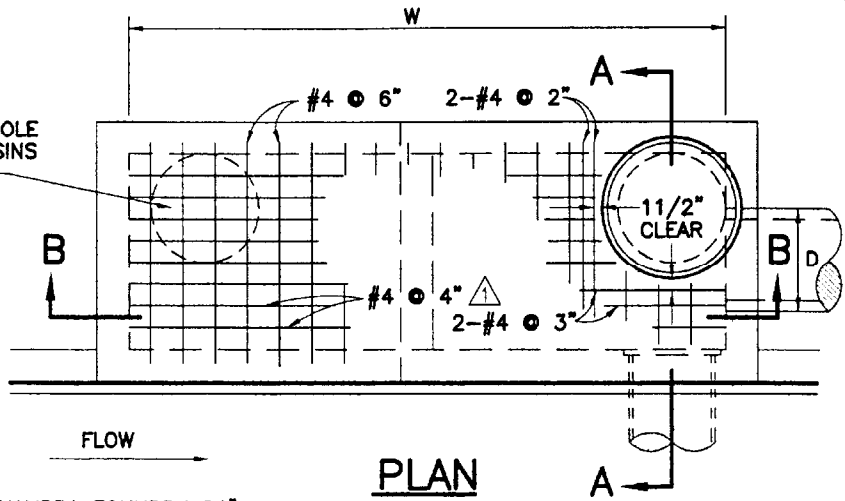
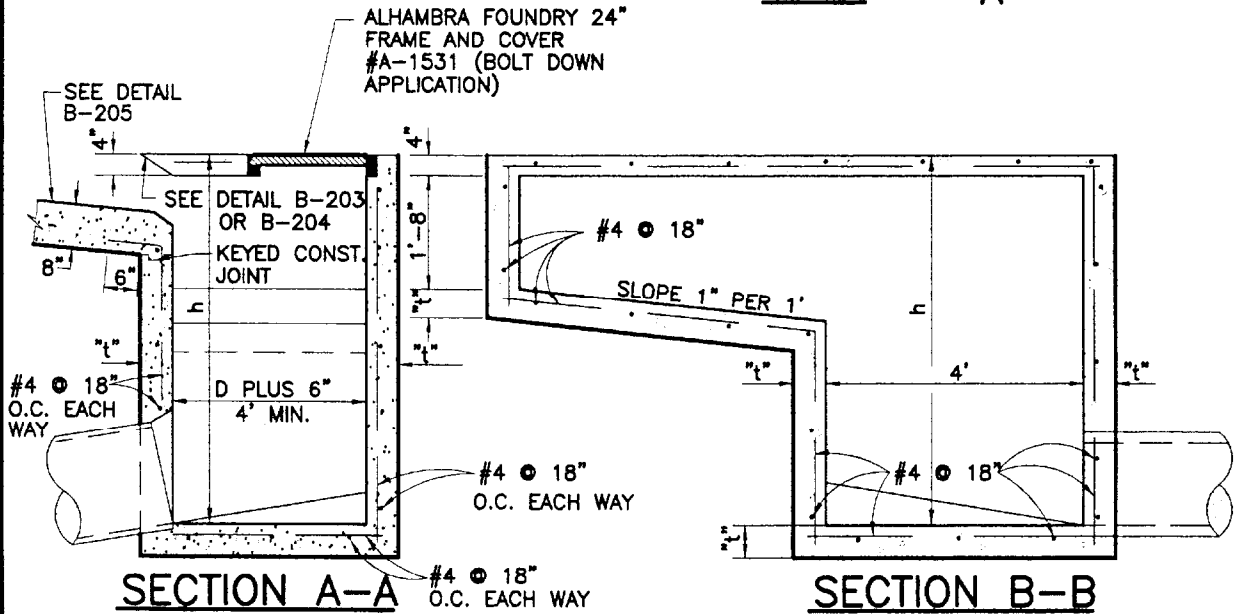


INSTALL 2ND MANHOLE  
ON ALL CATCH BASINS  
14' AND LONGER

h	"t"
UP TO 8'-0"	6"
UP TO 16'-0"	8"



**PLAN**



**SECTION A-A**

**SECTION B-B**

**NOTES:**

1. HORIZONTAL PROTECTION BAR SHALL BE USED WHEN INLET OPENING IS MORE THAN 8 INCHES. SEE STD. PLAN B-203 OR B-204 FOR DETAILS.
2. STEPS REQUIRED WHEN "h" IS GREATER THAN 3'-0". SEE STD. PLAN B-203.
3. OUTLET MAY BE MADE IN ANY DIRECTION.
4. PIPE INLETS AND OUTLETS SHALL BE AT BOTTOM OF BASIN UNLESS OTHERWISE SPECIFIED.
5. ALL EXPOSED CONCRETE SURFACES SHALL CONFORM IN GRADE, COLOR AND FINISH TO ALL ADJOINING CURB AND WALK.
6. ALL WALL AND BASE REINFORCING STEEL SHALL BE 1 1/2 INCHES CLEAR FROM INSIDE OR OUTSIDE FACE OF STRUCTURE.
7. WHEN "w" IS LESS THAN 8 FEET, USE STD. PLAN B-201.
9. ALL CONCRETE SHALL BE CLASS "A" (6 SACK WITH 3/4" AGGREGATE).
10. SLOPE BOTTOM OF CATCH BASIN TOWARDS OUTLET A MIN. OF 1" PER FOOT FROM ALL SIDES.



City of  
Garden Grove  
California

**CATCH BASIN - TYPE 0L  
(CURB OPENING - LARGE)**

Approved

Date 11/4/07

REVISIONS

BY

DATE

STD. PLAN NUMBER

City Engineer R.C.E. 50353 Exp.06-30-09

**B-202**