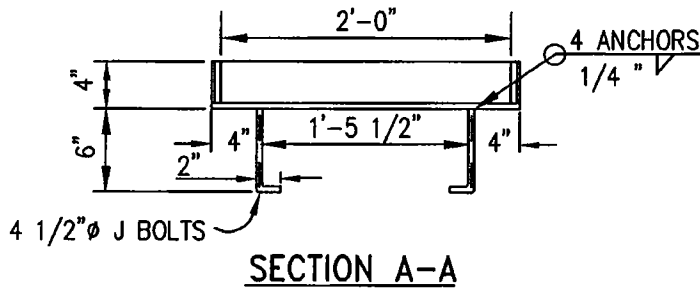
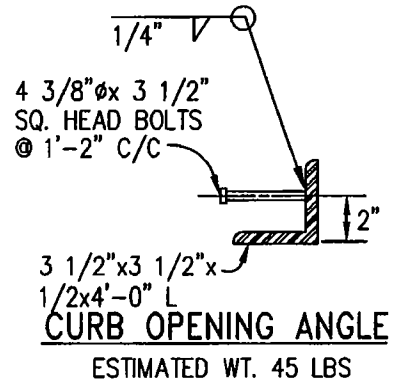


PLAN
ESTIMATED WT. 90 LBS



NOTES:

1. ALL METAL SHALL BE STRUCTURAL GRADE STEEL OR BETTER.
2. GRATINGS AND FRAMES ARE TO BE ASSEMBLED AND MADE TO FIT BEFORE DELIVERY TO THE JOB SITE.
3. ALL STEEL COMPONENTS SHALL BE GALVANIZED AFTER FABRICATION. GALVANIZED SURFACES THAT ARE ABRADED SHALL BE REPAIRED AS SPECIFIED IN SECTION 75-1.05 "GALVANIZING" OF THE STANDARD SPECIFICATIONS
4. CURB OPENING ANGLE IS PART OF THE FRAME FOR INLET TYPE I, V, AND VI.



BICYCLE TYPE FRAME AND GRATE

SCALE: NOT TO SCALE
 DATE: SEPTEMBER 13, 2006
 DRAWN BY: LDH
 V: \CAD\NEW STANDARDS

APPROVED:
M. Melissa N. Pitor
 PUBLIC WORKS DIRECTOR

SHEET 2 OF 2

CD-412