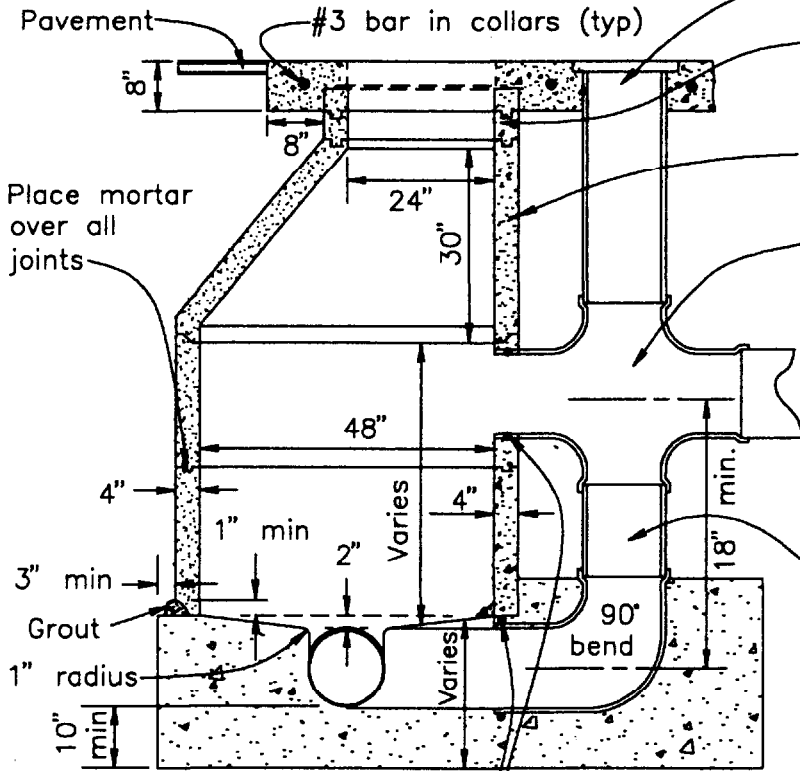


Manhole frame and cover to conform with Standard Detail S.1

**Plan View**

Slope shelves to drain



**Section A - A**

Brooks No. 3RT box with cover and concrete grade ring  
3" or 6" Riser Ring (9" Maximum)

Manhole walls shall be a precast type conforming to ASTM Std. C478-61T for Class 2 reinforced concrete pipe.

Cross  
Manholes shall be watertight.

Joints to be set in a watertight mastic sealant approved by the Director

Broken or chipped rings and cones shall not be used, except with approval of the Director.

Lateral connection over 5' to be PVC for drop cross, pipe & 90° bend

Manhole base shall be a minimum of 10" with Class "A" concrete. Fresh concrete shall not fall over 6' unless an "elephant's trunk" or an "adjustable pipe" is used. Concrete work in channel shall be a steel trowel finish and shelf areas shall be a broom finish. Base shall be monolithically placed.

Approved:

*[Signature]* 29 JUNE 07  
Director of Public Works/  
Designee

*[Signature]* 29 June 07  
R. James Garing, RCE 26993  
City Engineer



**City of Grover Beach**

**Typical Drop Manhole S.3**