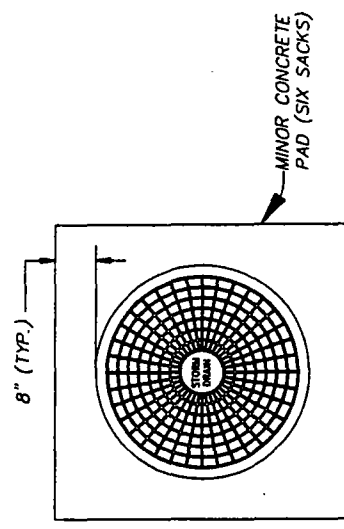
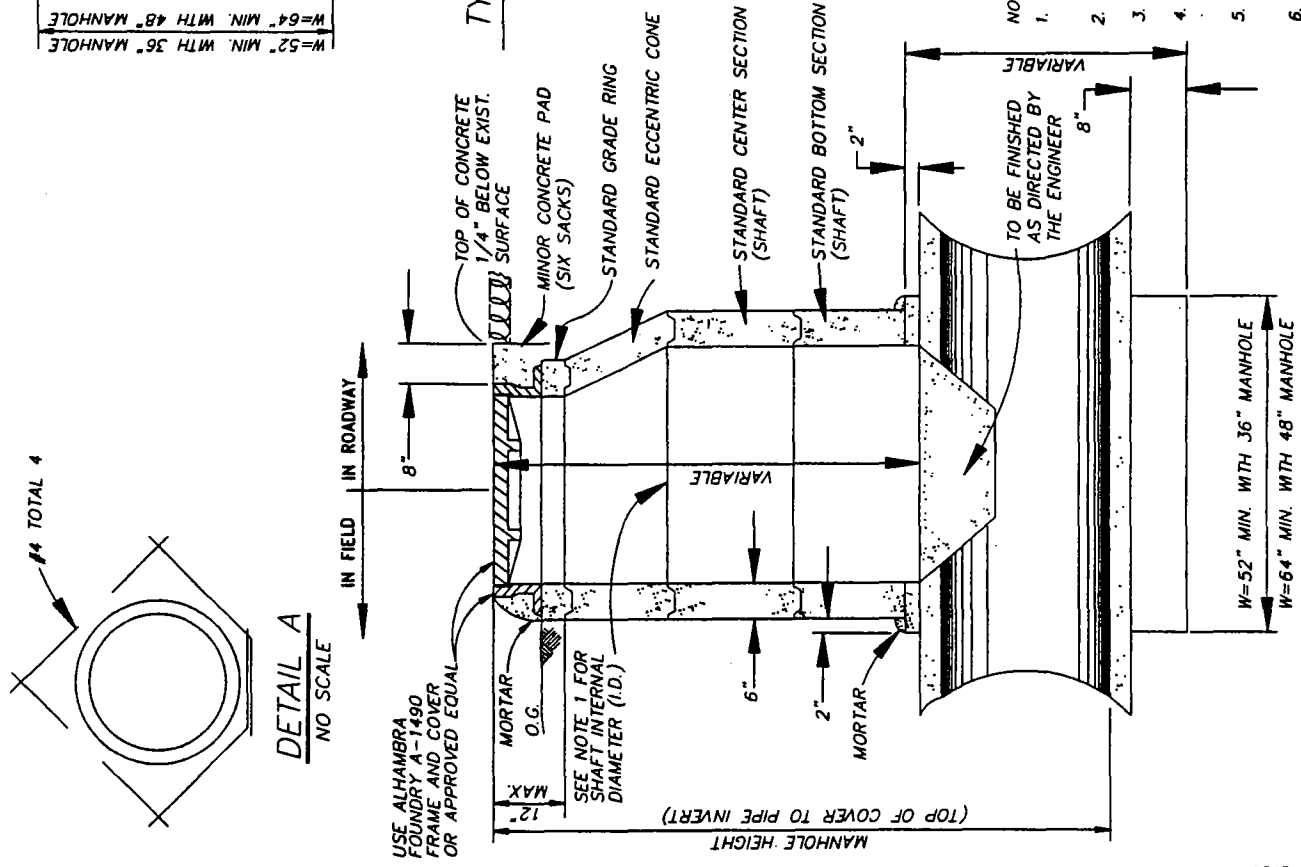


TYPICAL C.I.P. MANHOLE - PLAN VIEW
NO SCALE



MANHOLE COVER AND CONCRETE PAD
NO SCALE

- NOTES:
1. MANHOLE CONSTRUCTED ON CONCRETE PIPE OF 36" I.D. OR GREATER SHALL USE #8" SHAFT; CONCRETE PIPE WITH LESS THAN 36" I.D. SHALL USE 36" SHAFT.
 2. USE COMBINATION OF CONE AND SHAFT AS DIRECTED BY THE ENGINEER.
 3. ALL CONCRETE TO BE MINOR CONCRETE.
 4. ALL REINFORCING TO BE NO. 4 BARS AT 12" O.C., 1 1/2" CLEAR OF INSIDE FACE UNLESS OTHERWISE NOTED. SEE DETAIL "A" FOR REINFORCING AROUND PIPE.
 5. ALL EXPOSED METAL PARTS SHALL BE GALVANIZED AFTER FABRICATION EXCEPT FRAME AND COVER.
 6. LOCATION OF FRAME AND COVER TO BE DETERMINED BY THE ENGINEER.
 7. ALL REINFORCEMENT FOR SURFACES IN CONTACT WITH THE GROUND SHALL BE PROTECTED WITH NOT LESS THAN 2" OF CONCRETE.
 8. WORDING ON MANHOLE TO READ "STORM DRAIN".



DETAIL A
NO SCALE

SECTION A-A
NO SCALE

PLOTTED: 8/18/1995

ACAD FILE #23\D-5

| Revisions | DATE: |
|-----------|---------------------|
| Date Desc | 8-18-1995 |
| | DESIGNED BY: R.J.L. |
| | DRAWN BY: K.S. |
| | CHECKED BY: C.L. |

COUNTY OF KERN
STATE OF CALIFORNIA
**DEVELOPMENT
STANDARD**

**TYPE "C" MINOR
STRUCTURE -
MANHOLE**

PLATE NO.
D-5