

DIST. COUNTY ROUTE POST MILES SHEET TOTAL
 TOTAL PROJECT NO. SHEETS
 REGISTERED CIVIL ENGINEER
 MAY 1, 2006
 PLAN'S APPROVAL DATE
 The State of California or its officers or employees shall not be held responsible for any errors or omissions in this drawing or any consequences of any reliance thereon.
 To get the latest web site go to: <http://www.dgs.ca.gov>

- NOTES:**
- "H" is the difference in elevation between the outlet pipe flow line and the normal gutter grade line undepressed.
 - For "1" wall thickness, see Table A below.
 - Wall reinforcing not required when "H" is 8'-0" or less and the unsupported width or length is 7'-0" or less. Walls exceeding these limits shall be reinforced with #4 @ 18" centers placed 1/2" clear to inside of box unless otherwise shown.
 - Inlet bottom reinforcing not required. See Standard Plan D74C for alternative reinforced bottom.
 - Steps - None required where "H" is less than 2'-6" lowest rung 1'-0" above the floor and highest rung not more than 6" below top of inlet. The distance between steps shall not exceed 1'-0" and shall be uniform throughout the length of the wall. Place steps in the wall without an opening. Step inserts may be substituted for the bar steps. Step inserts shall comply with State Industrial Safety requirements. See Standard Plan D74C for step details.
 - When shown on the project plans, place a #6 plain round protraction bar horizontally across the length of the opening and bend back 4" into the inlet wall on each side.
 - Pipe(s) can be placed in any wall.
 - Curb section shall match adjacent curb.
 - Basin floors shall have wood trowel finish and shall slope toward the outlet pipe as shown.
 - Galvanizing - See Standard Specifications or Special Provisions.
 - See Standard Plan D77A and D77B for grate and frame details and weights of miscellaneous iron and steel.
 - See Standard Plan D78A for gutter depression details.
 - Full penetrating butt welds may be substituted for the fillet welds on all anchors.
 - Standard square, hexagon, round or equivalent headed anchors may be substituted for the right angle hooks on the anchors shown on this plan.
 - Cast-in-place or precast alternative is optional with contractor. See Standard Specifications.
 - Cast-in-place inlets to be formed around all pipes/stubs intersecting the inlet and concrete poured in one continuous operation. Precast inlets shall have mortared pipe connections conforming to details for Type CDP inlets on Standard Plan D75B. See Standard Specifications for mortar composition.

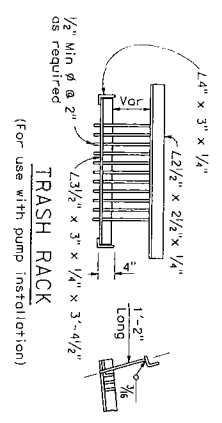
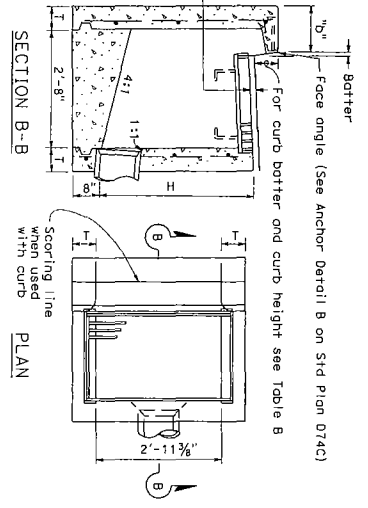
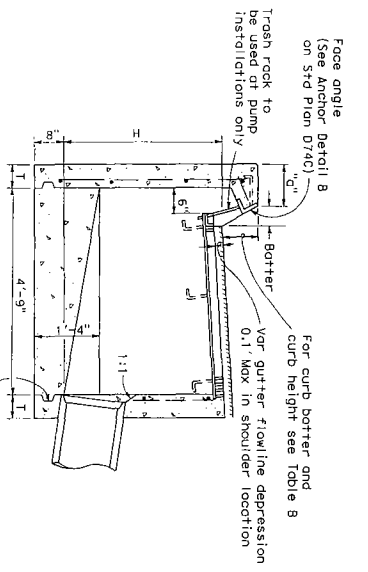


TABLE A
CONCRETE QUANTITIES

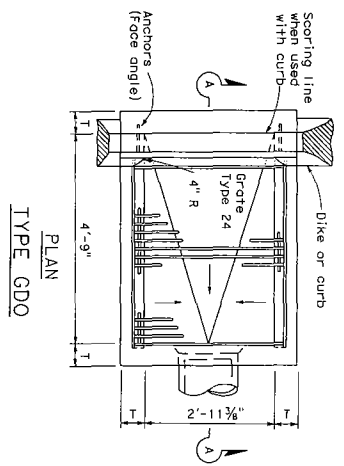
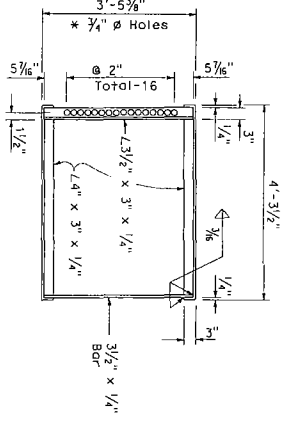
TYPE	ADDITIONAL PER CY	H=3'-0" TO 6'-0" T=6"	H=8'-1" TO 20'-0" T=8"	ADDITIONAL PER CY
DD	1.24	0.245	3.39	0.346
GDO	1.62	0.322	4.36	0.446

Table based on 8" floor slab, no deduction for pipe openings, and curb type giving highest quantity of concrete. No deductions or adjustments are to be made to these quantities because of pipe openings, different floor alternatives or different curb type.

TABLE B

CURB TYPE	NORMAL CURB HEIGHT	CURB BATTER	"a" DIMENSION	"b" DIMENSION
A1-6	6"	1 1/2"	7 1/2"	6 1/2"
A1-8	8"	2"	7"	6"
A1-6	6"	4"	5"	4"
Type A Dike	6"	3"	6"	5"

GRATE FRAME FOR TYPE GDO INLET
* 3/4" Ø holes required only with trash rack



PLAN
TYPE GDO

STATE OF CALIFORNIA
 DEPARTMENT OF TRANSPORTATION
DRAINAGE INLETS
 NO SCALE

D74B