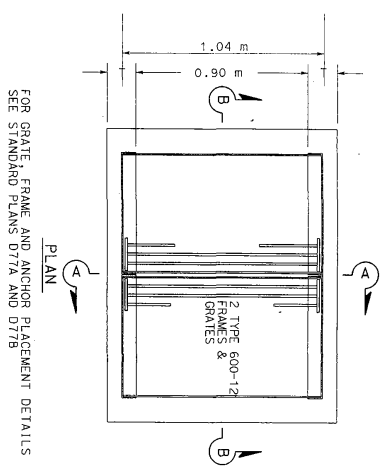
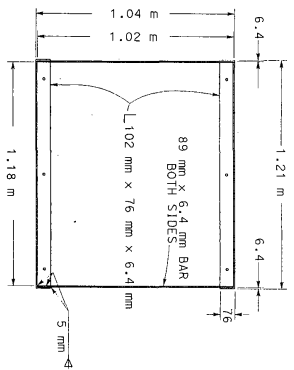


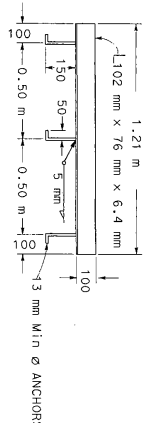
STATE OF CALIFORNIA - DEPARTMENT OF TRANSPORTATION	PROJECT ENGINEER	CALCULATED/DESIGNED BY	MM	DATE	REVISED BY
Caltrans PROJECT DEVELOPMENT	SCOTT M. FRIESEN	CHECKED BY	SMF	DATE	REVISED



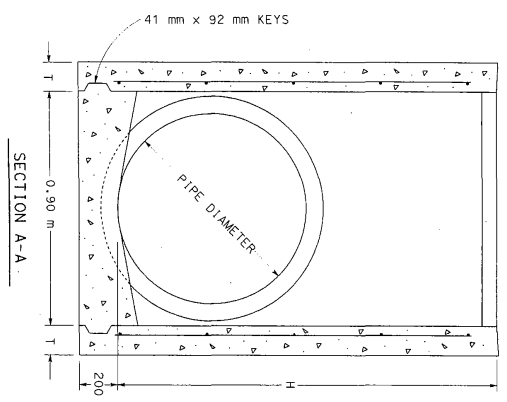
FOR GRATE, FRAME AND ANCHOR PLACEMENT DETAILS
 SEE STANDARD PLANS D77A AND D77B



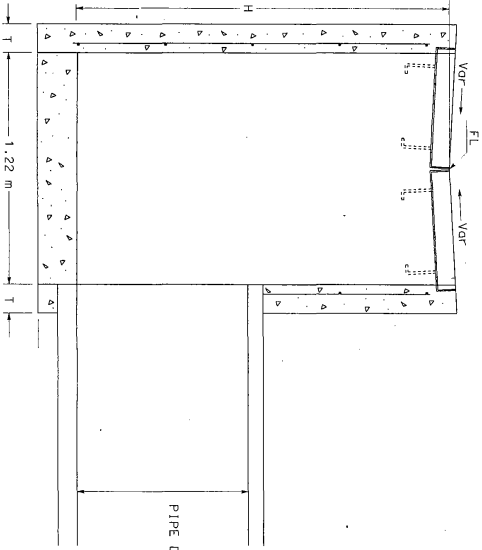
GRATE FRAME DETAIL



ANCHOR PLACEMENT DETAIL



SECTION A-A



SECTION B-B

DRAINAGE INLET (TYPE GD3)

NOTES

1. STEPS - NONE REQUIRED WHEN 'H' IS 1.07 m OR LESS. INSTALL ONE STEP 400 mm ABOVE FLOOR WHEN 'H' IS MORE THAN 1.07 m AND LESS THAN 1.52 m. WHERE 'H' IS MORE THAN 1.52 m STEPS SHALL BE EVENLY SPACED @ 300 mm INTERVALS FROM 400 mm ABOVE FLOOR TO WITHIN 100 mm OF WALL TO THROUT PIPE OPENINGS. SEE STANDARD PLAN D74C FOR STEP DETAIL.
2. PIPE(S) CAN BE PLACED IN ANY WALL.
3. REINFORCING STEEL NOT REQUIRED IN WALLS WHEN H=1.83 m OR LESS.
4. REINFORCING STEEL IN WALLS SHALL BE # 13 BARS @ 400 mm CENTERS PLACED 40 mm CLEAR 600-12 WITH A MASS OF 296 kg SHALL BE USED

H	T
2.44 m OR LESS	150 mm
2.46 m TO 6.10 m	200 mm

ALL DIMENSIONS ARE IN MILLIMETERS UNLESS OTHERWISE SHOWN
DRAINAGE DETAILS
(DRAINAGE INLET - TYPE GD3)
DD-7
 NO SCALE



DATE	COUNT	ROUTE	TOTAL PROJECT	SHEET TOTALS
11-27-06	99	38.3/R42.7	121	403

REGISTERED PROFESSIONAL ENGINEER
 SCOTT M. FRIESEN
 No. 57969
 Exp. 6/30/08
 CIVIL
 STATE OF CALIFORNIA

RELATIVE BORDER SCALE
 0 20 40 60 80
 IS IN MILLIMETERS