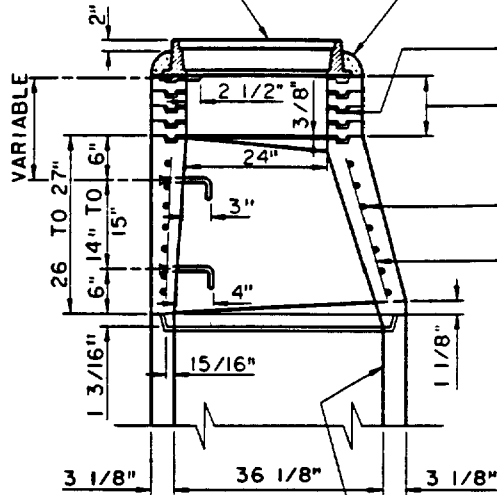


MANHOLE FRAME AND COVER PER STD. PLAN 324

COLLAR (CLASS C MORTAR) OMIT UNDER NOTE 4

MANHOLE FRAME AND COVER PER STD. PLAN 324



STD. CONCRETE RINGS. 3", 6" OR 16" IN THICKNESS

SEE RING SECTION FOR JOINT DETAILS

WHEN POSSIBLE USE 4-2 1/2" RINGS OR EQUIVALENT 24" MAXIMUM

#2 COILS. 7 REQUIRED

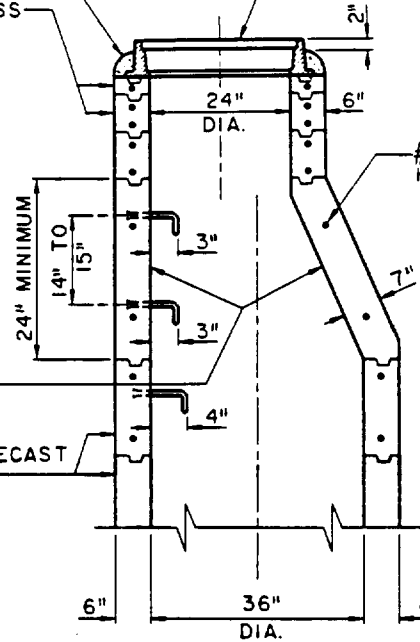
#2 TIE BARS. 4 REQUIRED

ECCENTRIC PRECAST CONCRETE CONE

VARIABLE LENGTH PRECAST CONCRETE SECTIONS

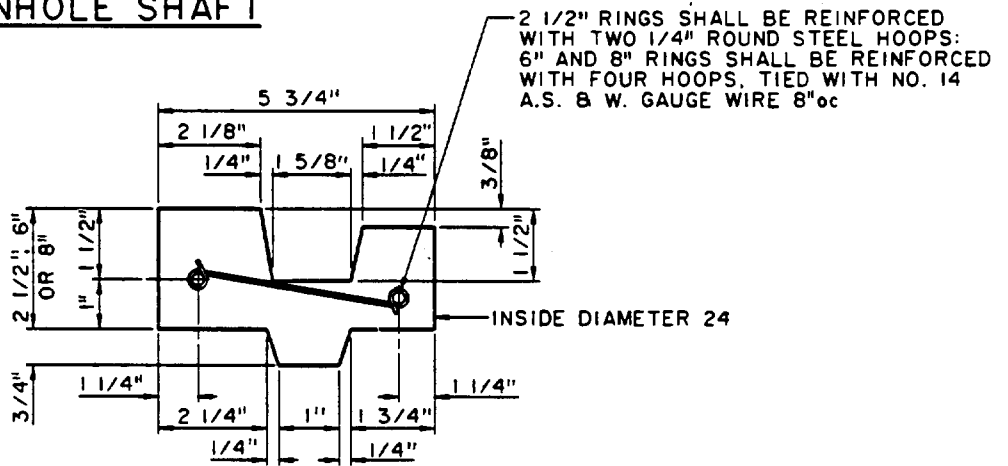
36" SPECIAL MH RCP

ANY STANDARD PIPE END 5"X2" PIPE SEAT CLASS C MORTAR



VERTICAL SECTION OF PLAIN CONCRETE ECCENTRIC MANHOLE SHAFT

VERTICAL SECTION OF REINFORCED CONCRETE ECCENTRIC MANHOLE SHAFT



CROSS SECTION OF REINFORCED CONCRETE RING

CITY OF RANCHO CUCAMONGA, CALIFORNIA

APPROVED BY:

W. J. McNeil 6.1.92
CITY ENGINEER DATE
R.C.E. 24953

STANDARD MANHOLE SHAFT

USE WITH STANDARD SPECIFICATIONS FOR PUBLIC WORKS CONSTRUCTION

STANDARD PLAN

322

SHEET 1 OF 2

NOTES:


1. UNLESS OTHERWISE INDICATED THIS STRUCTURE SHALL CONFORM TO ASTM C478 AND ALL CONCRETE SHALL BE PER SSPWC.
2. MANHOLE FRAME AND COVER SHALL CONFORM TO STANDARD PLAN 324.
3. ALL JOINTS SHALL BE SEALED BY FILLING THE ANNULAR SPACES WITH CLASS C MORTAR. THE INSIDE OF THE SHAFT AT EACH JOINT SHALL BE WIPED CLEAN OF EXCESS MORTAR.
4. THE COLLAR AROUND THE COVER FRAME SHALL BE OMITTED IN PAVED STREETS.
5. STEPS SHALL CONFORM TO STANDARD PLAN 325. THE TOP STEP SHALL BE PLACED DIRECTLY BENEATH THE MANHOLE COVER FRAME. THE SPACING OF STEPS IN THE SHAFT SHALL BE 14" TO 15" O.C.
6. THE ECCENTRIC MANHOLE SHAFT, REDUCER AND RINGS MAY BE PLAIN CONCRETE. FOR PLAIN CONCRETE SECTIONS THE MINIMUM THICKNESS SHALL BE 6" AND THE MINIMUM COMPRESSIVE STRENGTH OF THE CONCRETE SHALL BE 3500 PSI IN 28 DAYS.
7. THE PRECAST CONCRETE MANHOLE STRUCTURES WILL BE INSPECTED BY THE ENGINEER AND HE WILL INDICATE ACCEPTANCE FOR SHIPMENT TO THE JOB BY MARKING THE STRUCTURES WITH THE CITY STAMP.

THE FOLLOWING STANDARD PLANS ARE INCORPORATED HEREIN:

- 324 24-INCH MANHOLE FRAME AND COVER
- 325 STEEL STEPS

REVISED 7-20-92

CITY OF RANCHO CUCAMONGA, CALIFORNIA

APPROVED BY:
 6-1-92
 CITY ENGINEER DATE
 R.C.E. 24953

STANDARD MANHOLE SHAFT

USE WITH STANDARD SPECIFICATIONS FOR PUBLIC WORKS CONSTRUCTION

STANDARD PLAN

322

SHEET 2 OF 2