

MANHOLE FRAME & COVER  
REFER TO PLATE 517

MORTAR COLLAR  
(SEE NOTE 1)

SEE RING SECTION  
FOR JOINT DETAILS

REDUCER RING

#2 TIE BARS  
4 REQUIRED

#2 COILS

36" MAX.

4 1/8" MIN.  
REINF. RISER

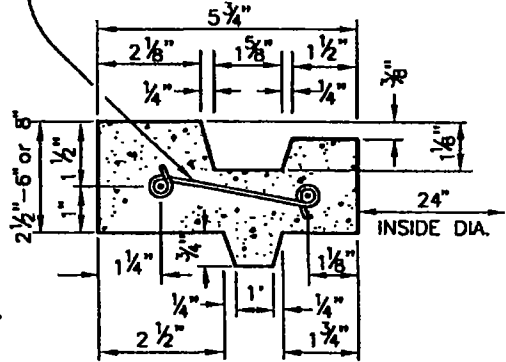
48" DIA.

4 1/8"

ANY STANDARD PIPE END

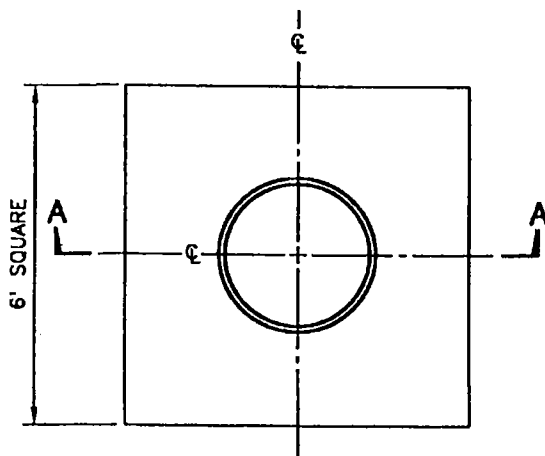
6" x 2" PIPE SEAT

2 1/2" RINGS SHALL BE REINFORCED  
WITH TWO 1/4" ROUND STEEL HOOPS;  
6" & 8" RINGS SHALL BE REINFORCED  
WITH 4 & 6 HOOPS RESPECTIVELY,  
2 3/4" APART.

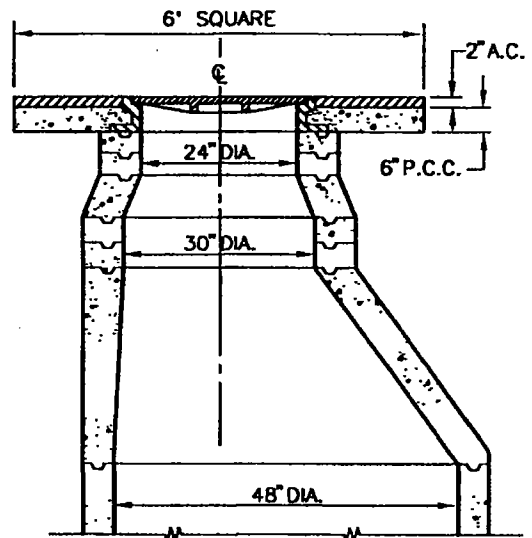


CROSS SECTION  
OF REINFORCED CONCRETE RING

VERTICAL SECTION  
OF REINFORCED CONCRETE  
ECCENTRIC MANHOLE SHAFT



PLAN VIEW



SECTION A-A

NOTES:

1. MORTAR COLLAR AROUND COVER FRAME SHALL BE OMITTED IN PAVED STREETS.
2. ALL JOINTS SHALL BE FILLED WITH MORTAR AND NEATLY POINTED OR WIPED ON INSIDE OF SHAFT.

REV.	APPR. BY	DATE

REV.	APPR. BY	DATE

<p>CITY OF <b>Oxnard</b> Department of Public Works</p>	<p><b>CONCRETE RINGS, REDUCER FOR MANHOLE SHAFT</b></p>		<p>STANDARD PLAN 2002</p>
	<p>DRAWN: STAFF</p>	<p>CKD.: STAFF</p>	<p>APPR. <i>Granville M. Bowman</i> Granville M. Bowman</p>