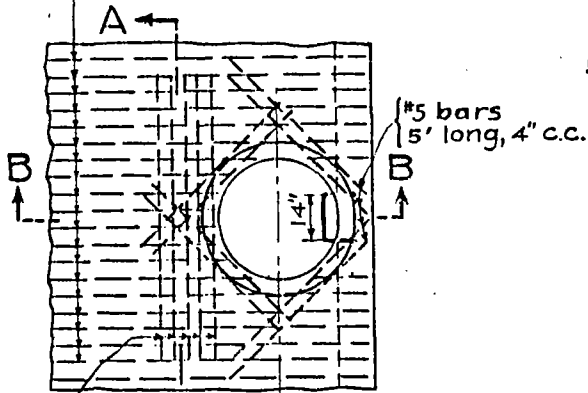
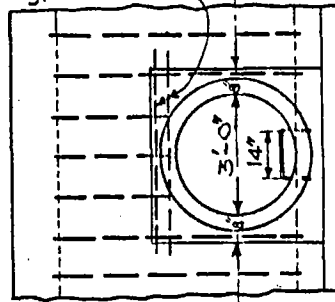


Size and spacing of steel as shown on Plan, except that 5 bars on each side of shaft shall be not smaller than #5 bars, 4" O.C. or equivalent.



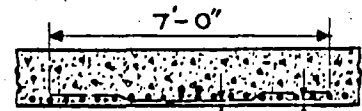
PLAN
(Shaft not shown)

2-#5 bars
5' long, 4" o.c.

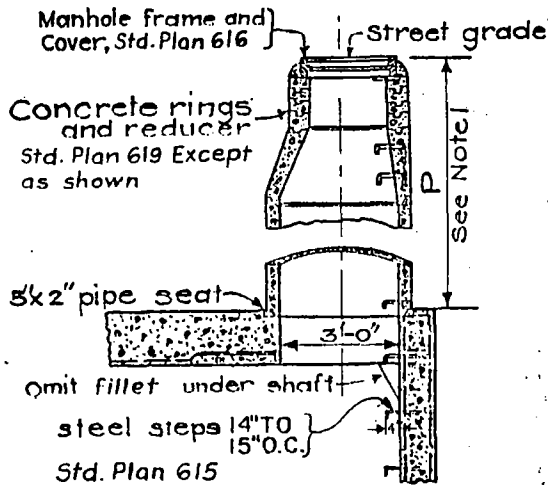


PLAN
(shaft not shown)

5 bars 7' long, 4" o.c., of size shown for transverse steel, but not smaller than #5 bars.
Warp these bars under bars that have been cut for shaft opening.

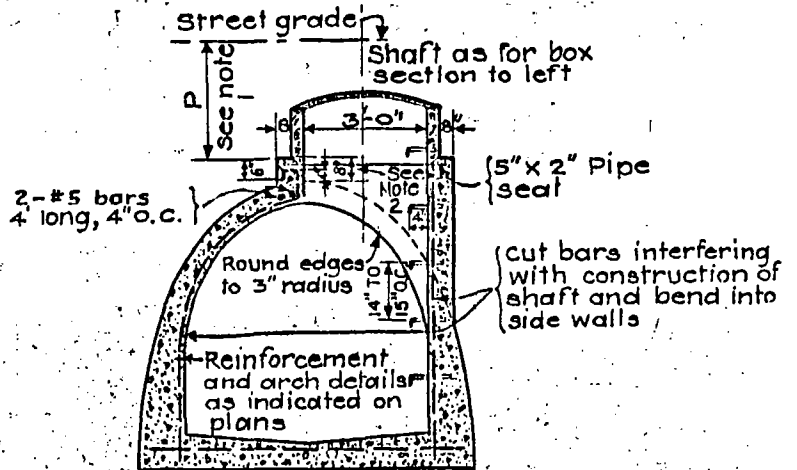


SECTION A-A



SECTION B-B

MANHOLE FOR
BOX SECTION STORM DRAIN



MANHOLE

FOR
ARCH SECTION STORM DRAIN

REVISIONS		CITY OF LONG BEACH, CALIFORNIA DEPARTMENT OF PUBLIC WORKS	STANDARD PLAN NO.
NO.	DATE		
1		MANHOLE NO. 3	623
2			
3			
4			
APPROVED BY: <i>Edward J. Hitz</i>		DATE: <u>6-26-89</u>	SHEET
CITY ENGINEER R.E. No. <u>24233</u>		EX. DATE: <u>12-31-89</u>	<u>1</u> OF <u>2</u>

NOTES

1. **DEPTH P** : When depth P from street grade to top of pipe seat is less than 2'-10½" in paved streets or 3'-6" in unpaved streets, construct 2 ft. diameter shaft, using concrete rings as per PLAN No. 2-D107, otherwise construct 3 ft. shaft as shown on this plan.
2. **OPTIONAL CONSTRUCTION** : Dimension from outside top of arch storm drain to top of pipe seat, shown 8 inches on this plan, may be increased, except that in so doing P shall not be reduced to less than 2'-10½" for paved streets or 3'-6" for unpaved streets, and that reducer shall be used.
3. **UNREINFORCED ARCH** : When specified with unreinforced concrete arch storm drain, construct manhole as shown on this plan for arch section, using 2-#5 bars.
4. **STATIONS** shown on plan refer to center line of shaft.
5. *Unless otherwise shown, steps shall be spaced 14" to 15" O.C. The lowest step shall be not more than 2 feet above the floor.*

REVISIONS	CITY OF LONG BEACH, CALIFORNIA DEPARTMENT OF PUBLIC WORKS	STANDARD PLAN NO.
NO. DATE	MANHOLE NO. 3	623
1		
2		
3	APPROVED BY: <u><i>Edward J. Futz</i></u>	DATE: <u>6-26-89</u>
4	CITY ENGINEER R.E. No. <u>24233</u>	EX. DATE <u>12-31-89</u>
		SHEET 2 OF 2