

PRODUCT NUMBER
CA24SRETGR01

CATALOG NUMBER

RET GRATE

LOAD RATING
H20

COATING
GALVANIZED

ESTIMATED WEIGHT

GRATE: LBS

MATERIAL SPECIFICATION

GRATE - STEEL
SEE NOTES

OPEN AREA
N/A

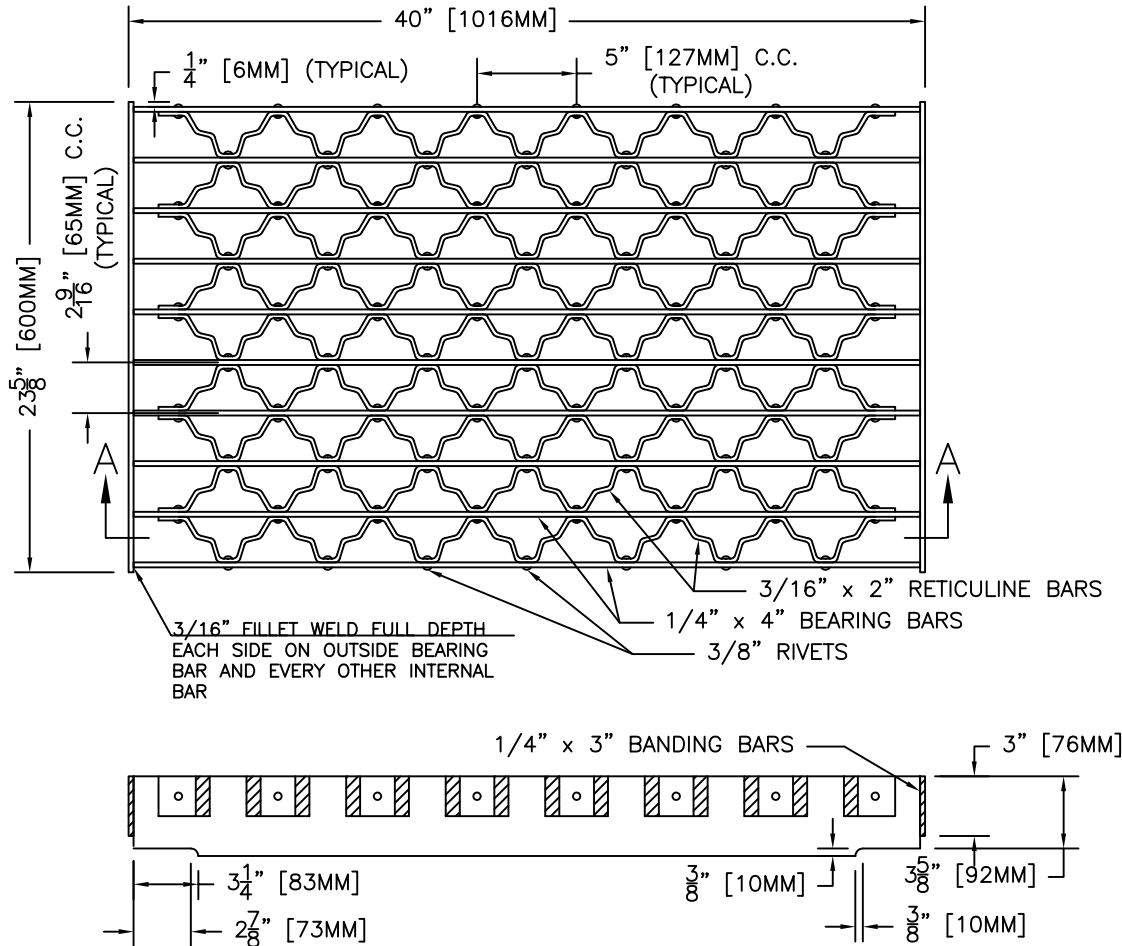
√ DESIGNATES MACHINE SURFACE

DRAWN AWM DATE 10/31/08

LAST REVISED DATE

REFERENCE INFORMATION

OOXXXXXX



NOTES:

- 1.) MATERIAL FOR BEARING BARS AND BANDING BARS SHALL CONFORM TO A.S.T.M. A36.
- 2.) RETICULINE BARS SHALL BE HOT ROLLED, PICKLED, AND OILED STEEL, GRADE 1008/1010.
- 3.) GRATES SHALL BE HOT-DIP GALVANIZED PER A.S.T.M. A123 AFTER FABRICATION.
- 5.) GRATES ARE DESIGNED FOR 16 KIP WHEEL LOAD (H-20).