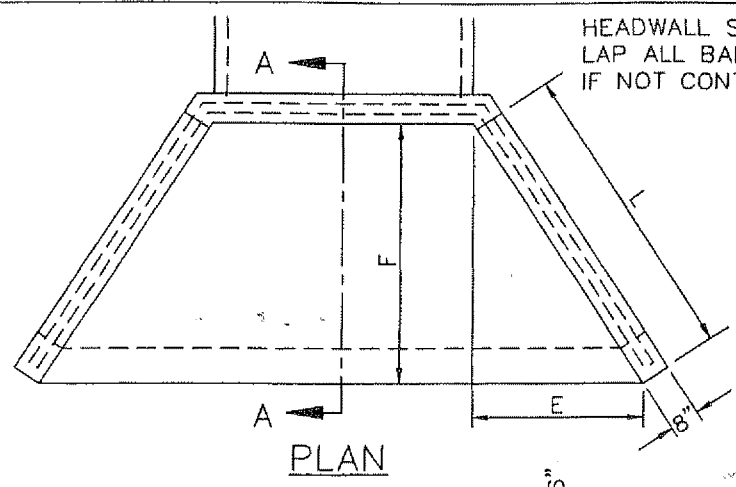
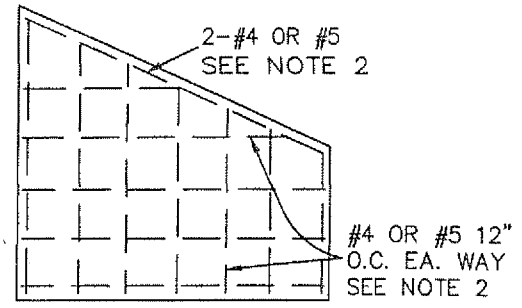


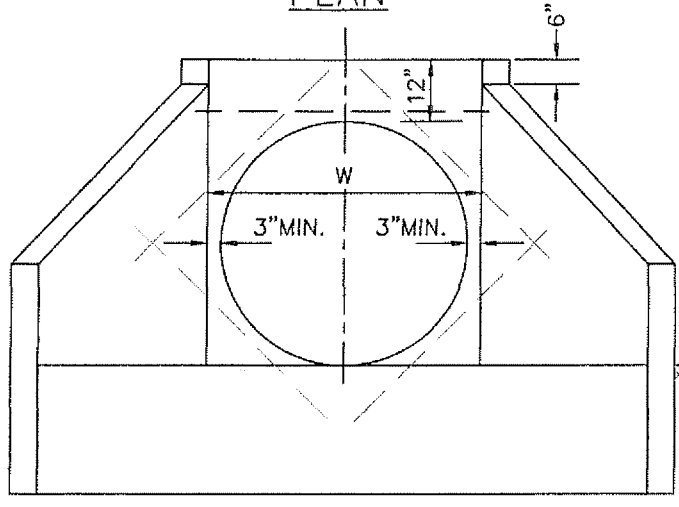
HEADWALL SHALL BE MONOLITHIC.
LAP ALL BARS AT CORNERS 30 DIAMETERS
IF NOT CONTINUOUS.



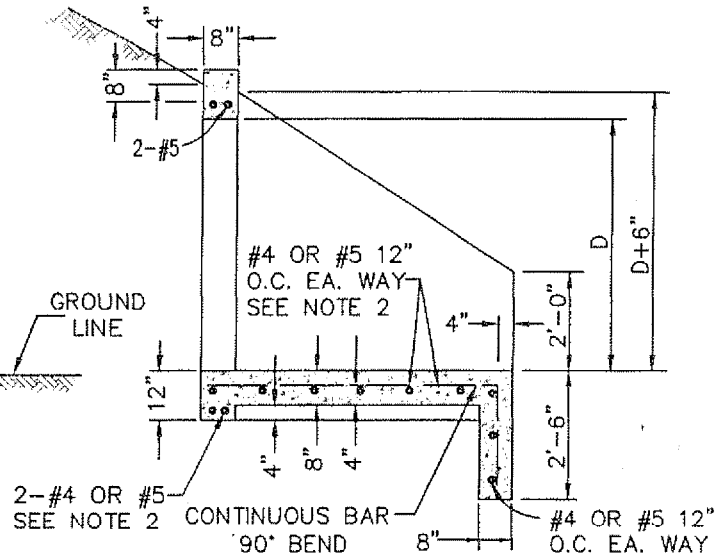
PLAN



REINFORCING DETAIL



ELEVATION

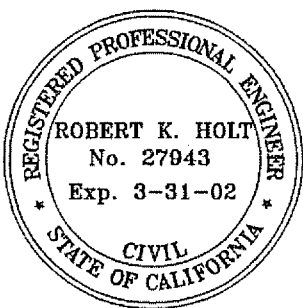


SECTION A-A

DIMENSIONS				
PIPE DIA.	L	E	F	W
24"	4'-9"	2'-8"	4'-0"	2'-6"
30"	5'-5"	3'-0"	4'-6"	3'-0"
36"	6'-0"	3'-4"	5'-0"	3'-8"
42"	6'-7"	3'-8"	5'-6"	4'-2"
48"	7'-3"	4'-0"	6'-0"	4'-10"
54"	8'-2"	4'-6"	6'-9"	5'-4"

NOTES:

1. CONCRETE SHALL BE CLASS "3" CONCRETE WHICH SHALL ATTAIN A 28-DAY COMPRESSIVE STRENGTH OF 4000 PSI IN ACCORDANCE WITH ASTM C39/C39M-99.
2. REINFORCING STEEL SHALL BE #4 BARS FOR "W" UP TO 60". ABOVE "W"=60" #5 BARS SHALL BE USED. 2" MINIMUM CLEARANCE, 30 DIAMETER LAP, ALL STEEL.
3. ADJACENT SLOPES SHALL BE 1-1/2 TO 1 OR FLATTER.
4. MULTIPLE PIPES TO BE SET WITH LONGITUDINAL CENTERS 1-2/3 DIAMETERS APART.
5. ALL EXPOSED CORNERS TO BE ROUNDED 3/4" RADIUS.
6. "W" SHALL BE INCREASED WHEN MULTIPLE PIPES OR PIPES ON SKEW ARE USED.



APPROVED: PUBLIC WORKS DIRECTOR
James W. Rodkey, Jr. DATE 9/7/00
 JAMES W. RODKEY, JR.
 APPROVED: CITY ENGINEER
Robert K. Holt DATE 8/11/00
 ROBERT K. HOLT, P.E.

CITY OF
BLYTHE

HEADWALL
 WING - TYPE

STANDARD DRAWING NO. SD-528

REVISION BY DATE