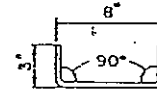
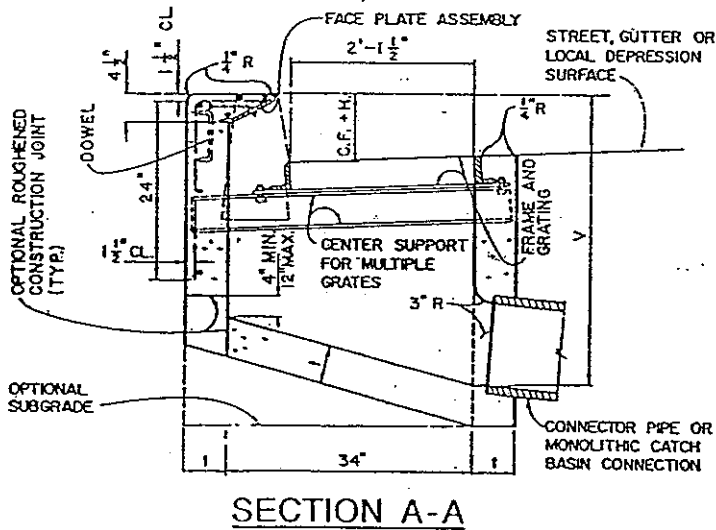


NOTE: GRATE SHALL BE ALHAMBRA FOUNDRY A-1546 BICYCLE AND TRAFFIC PROOF OR APPROVED EQUAL.



DOWEL DETAIL



| STRUCTURAL DATA | | | |
|---|--------|-----|-----------------------------------|
| WALL AND SLAB DIMENSIONS AND REINFORCEMENT REQUIREMENTS | | | |
| NO. OF GRATES | MAX. V | t | REINFORCEMENT FOR WALLS AND SLABS |
| 1-2 | 4' | 6" | NOT REQUIRED |
| 1-2 | 8' | 8" | |
| 1-2 | 10' | 10" | REQUIRED |
| 1-2 | 12' | 10" | |
| 3-4 | 4' | 6" | NOT REQUIRED |
| 3-4 | 7' | 8" | |
| 3-4 | 8' | 8" | REQUIRED |
| 3-4 | 12' | 10" | |
| 5-6 | 4' | 6" | NOT REQUIRED |
| 5-6 | 6' | 8" | |
| 5-6 | 8' | 8" | REQUIRED |
| 5-6 | 12' | 10" | |
| > 6 | 4' | 6" | |
| > 6 | 8' | 8" | |
| > 6 | 12' | 10" | |

ADOPTED FROM AMERICAN PUBLIC WORKS ASSOCIATION STANDARD PLAN 302-B

CITY OF NEWPORT BEACH
PUBLIC WORKS DEPARTMENT

CURB OPENING CATCH BASIN WITH GRATING(S)

DRAWN F.T. DATE 1/15/91

APPROVED

[Signature]
PUBLIC WORKS DIRECTOR
R.E. NO. 36106

DRAWING NO. STD-321-L-A