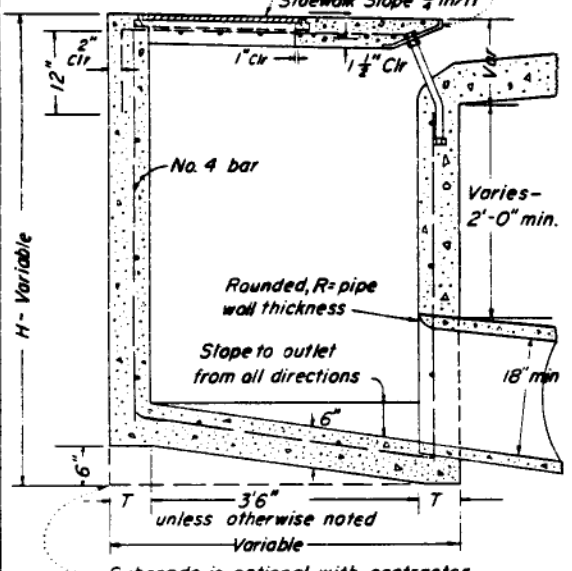
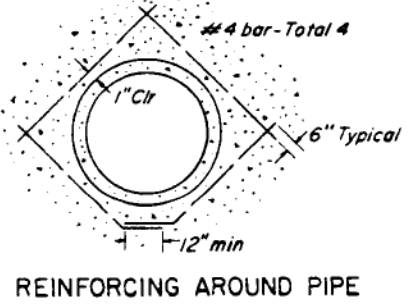


PLAN

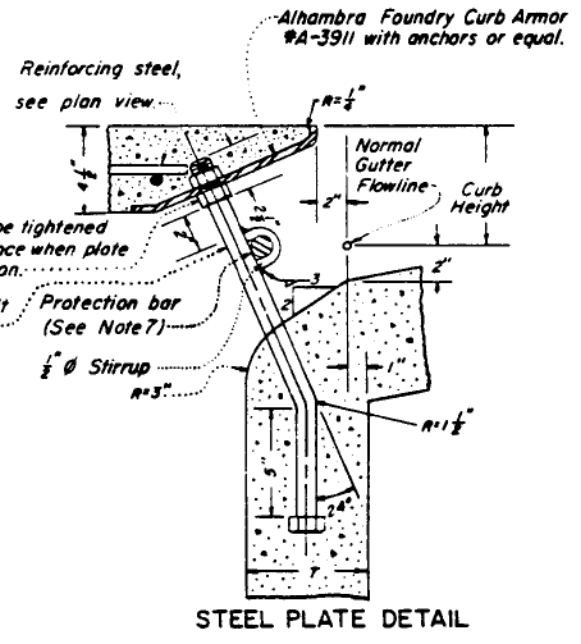
Alhambra Foundry galvanized frame & cover # A1530 with 2- $\frac{3}{4}$ " stainless steel socket head set screws (set opposite and finished flush) or equal.



SECTION A-A



REINFORCING AROUND PIPE



STEEL PLATE DETAIL

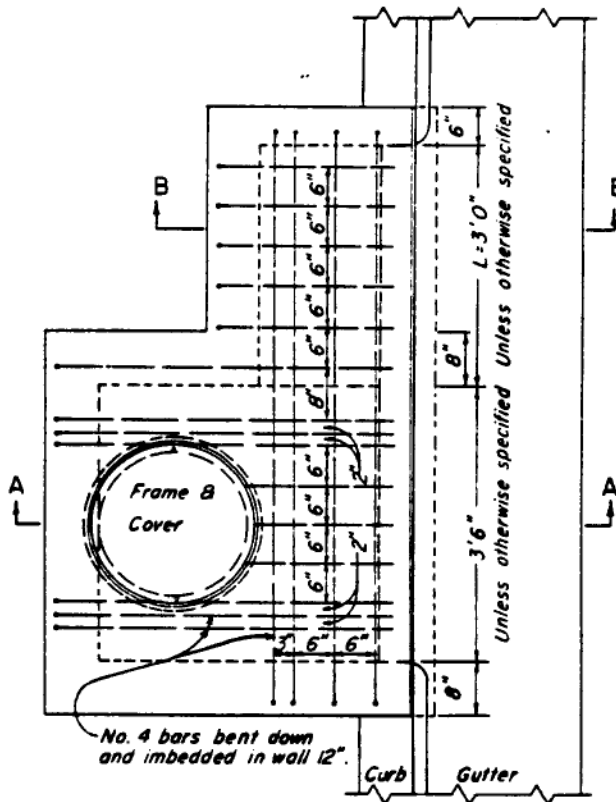
GENERAL NOTES:

1. All concrete shall be Class "A" and shall be within 2 $\frac{1}{2}$ " to 5 $\frac{1}{2}$ " slump.
2. Slab to be poured monolithic with sidewalk where sidewalk is constructed or replaced. Surfaces of all exposed concrete shall match slope, finish, color and scoring of adjacent concrete.
3. WALL THICKNESS: T=6" except when:
 H > 8 feet T=8"
 L > 8 feet T=8"
 Catch basin walls shall be increased by 2" minimum in thickness if poured against earth in lieu of outside face forms.
4. Wall reinforcing not required when H=8' or less and L=7' or less. Walls exceeding these limits shall be reinforced with No. 4 bars at 18" O.C., both ways. All reinforcing shall be No. 4 bars 1 $\frac{1}{2}$ " clear of inside face unless otherwise shown.
5. All exposed metal parts shall be galvanized after fabrication.
6. Support bolts shall be installed when length of opening exceeds 5'0" and shall be spaced at not more than 5'0" O.C. and not less than 3'0" O.C.
- * 7. When curb opening exceeds 5 $\frac{1}{2}$ ", a plain round steel protection bar 1" in diameter shall be installed. Bar shall be imbedded 5" at each end.
8. Pipe shall be as specified or as directed by the Engineer. The angular cut on the pipe shall be made as directed by the Engineer.
9. All work shall conform to the applicable sections of the specifications entitled "Standard Specifications, State of California, Department of Transportation", current edition.

JUL '89

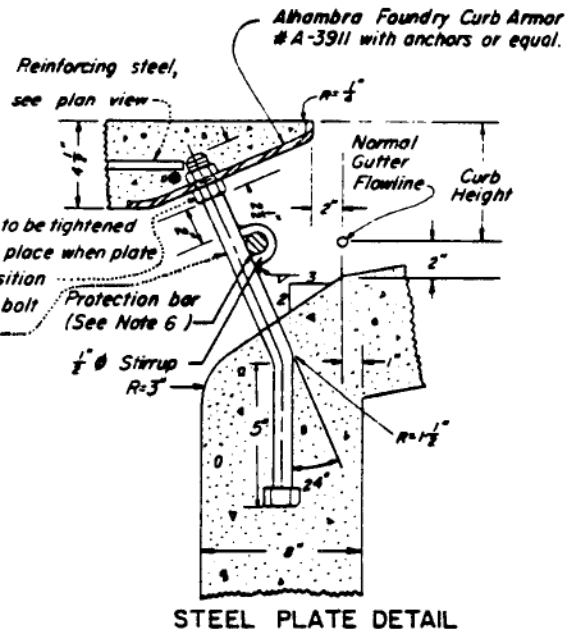
* Revised 9/22/82

APPROVED BY THE CITY COUNCIL Feb 17, 1982 <i>Philip Kelman</i> CITY CLERK	STANDARD CATCH BASIN TYPE "A"	DATE Jan 26, 1982
APPROVED <i>J. Dale Hawley</i> CITY ENGINEER		DRAWN G.E.G. CHECKED B.J.D. SEALER None
CITY OF BAKERSFIELD CALIFORNIA ENGINEERING DEPARTMENT		S-12



No. 4 bars bent down and imbedded in wall 12"

Unless otherwise specified

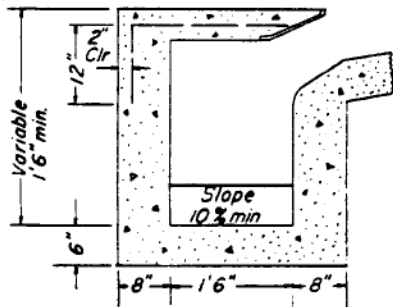
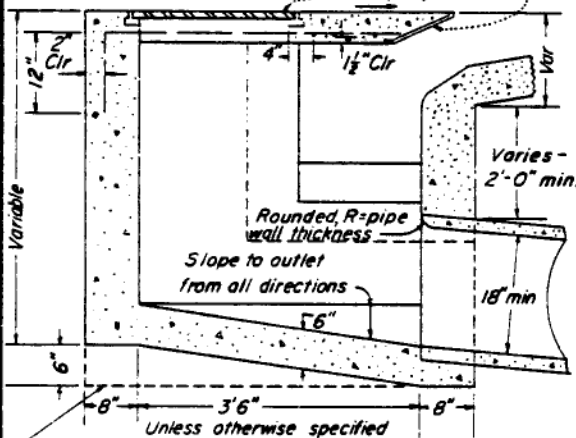


GENERAL NOTES:

1. All concrete shall be Class "A" and shall be within 2 1/2" to 5 1/2" slump.
2. Slab to be poured monolithic with sidewalk where sidewalk is constructed or replaced. Surfaces of all exposed concrete shall match finish, slope, color and scoring of adjacent concrete.
3. Catch basin walls shall be increased by 2" minimum in thickness if poured against earth in lieu of outside face forms.
4. All reinforcing shall be No. 4 bars unless otherwise shown. All exposed metal parts shall be galvanized after fabrication.
5. Support bolts shall be spaced at not more than 5'-0" O.C. and not less than 3'-0" O.C.
- * 6. When curb opening exceeds 5 1/2", a plain round steel protection bar 1" in diameter shall be installed. Bar shall be imbedded 5" at each end.
7. Pipe shall be as specified or as directed by the Engineer. The angular cut on the pipe shall be made as directed by the Engineer.
8. All work shall conform to the applicable sections of the specifications entitled, "Standard Specifications, State of California, Department of Transportation", current edition.

Alhambra Foundry galvanized frame & cover No. A1530 with 2- 3/4" stainless steel socket head set screws (set opposite and finished flush) or equal.

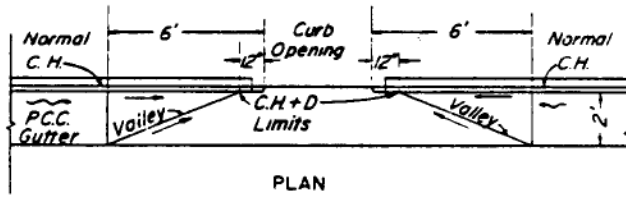
Sidewalk Slope 1/4" in/ft. See Steel Plate Detail



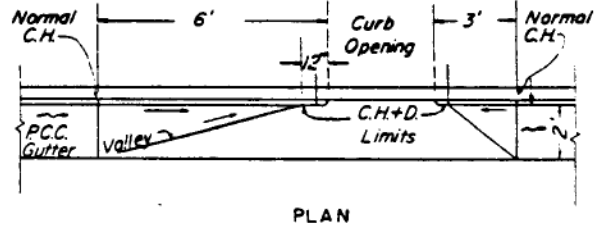
REVISED JUL '89

* Revised 9/22/82

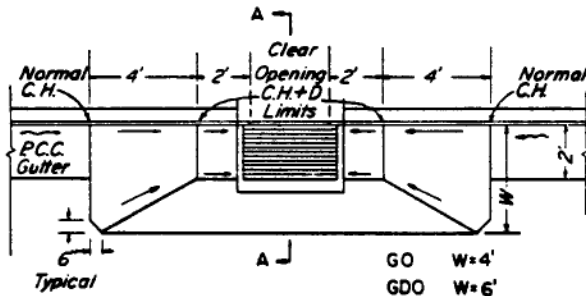
APPROVED BY THE CITY COUNCIL Feb 17, 1982	STANDARD CATCH BASIN TYPE "A-1"	DATE Feb. 5, 1982
<i>Philip Helmar</i> CITY CLERK		DRAWN G.E.G.
APPROVED <i>J. Dale Hawley</i> CITY ENGINEER	CITY OF BAKERSFIELD CALIFORNIA ENGINEERING DEPARTMENT	CHECKED B.J.D.
		SCALES None
		S-13



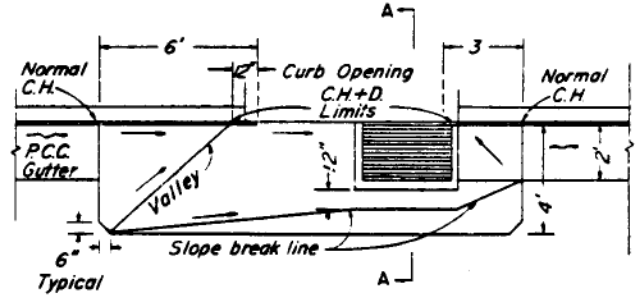
TYPE A CATCH BASIN IN GRADE SAG



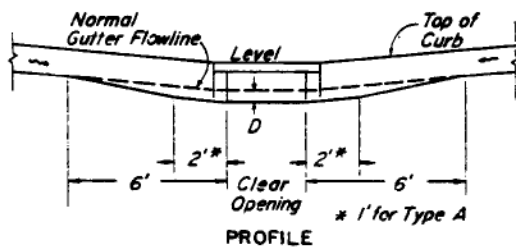
TYPE A & A-1 CATCH BASIN ON GRADE



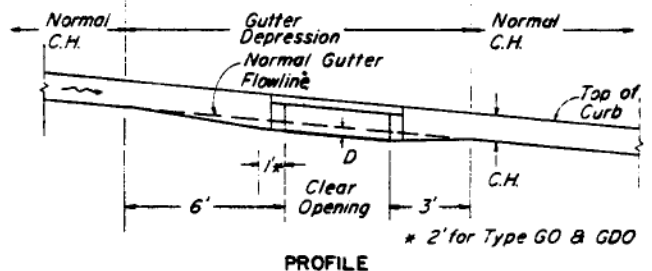
TYPE GO & GDO INLET IN GRADE SAG
(GO SHOWN)



TYPE GOL INLET ON GRADE



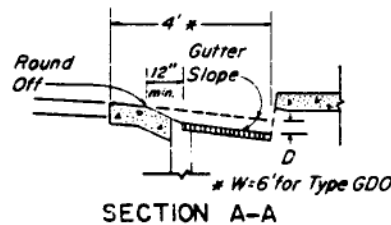
TYPE GO & GDO INLET, TYPE A CATCH BASIN
IN GRADE SAG



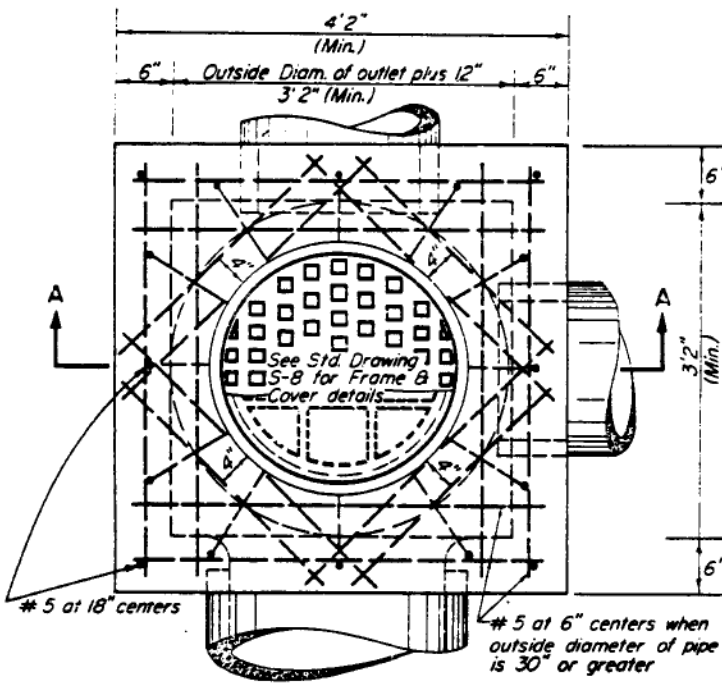
GRATE INLET AND CATCH BASIN ON GRADE

GENERAL NOTES

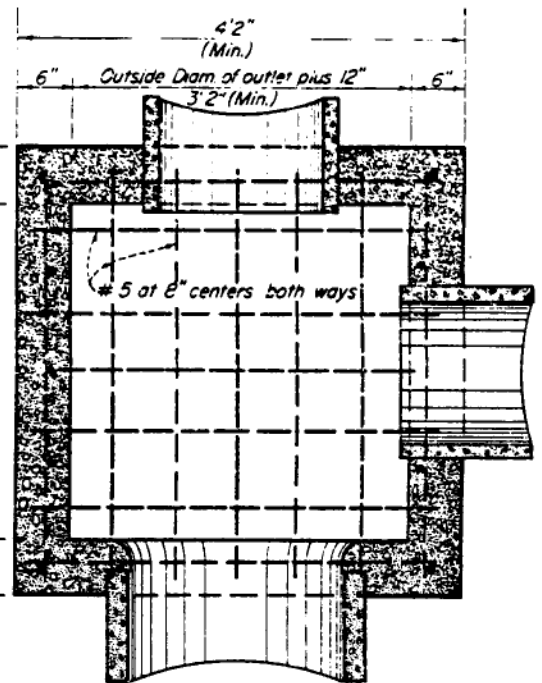
1. D = Gutter Depression. It shall be 2" for Type A and A-1 catch basins and 3" for other inlet types unless otherwise shown.
C.H. = Curb Height.
C.H.+D Limits = Limits of total depression in gutter.
— = Straight Grade, Downward Slope.
~ = Gutter direction of flow.
2. Gutter depressions shall be Class "B" P.C.C. 6" thick.
3. GDO, GO and GOL inlets may be used with approval of the City Engineer. GDO, GO and GOL inlets shall be constructed, without steps, in conformance to State of California, Department of Transportation Standard Plans D72 & D74 and Grates shall be Type 24 in conformance to Standard Plan D77-B.
4. Details for A.C. pavement. When P.C.C. pavement is used, corners shall be squared off.



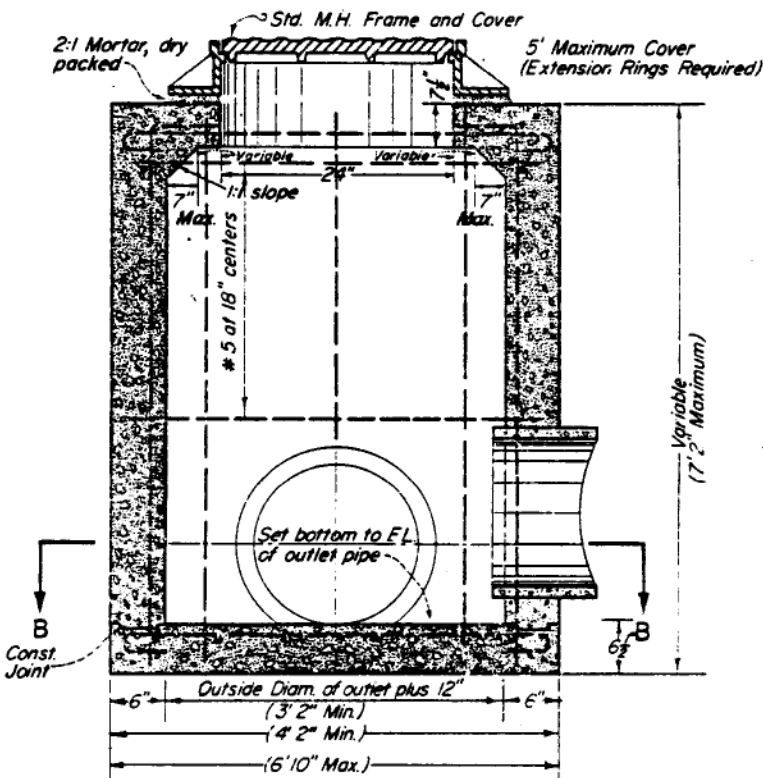
APPROVED BY THE CITY COUNCIL Feb 17, 82 <i>Philip Selman</i> CITY CLERK	DATE Feb. 8, 1982 DRAWN G.E.G. CHECKED B.J.D. SCALED None
APPROVED <i>J. Dale Hauler</i> CITY ENGINEER	STANDARD GUTTER DEPRESSIONS CITY OF BAKERSFIELD CALIFORNIA ENGINEERING DEPARTMENT
	S-14



PLAN



SECTION B-B



SECTION A-A

GENERAL NOTES:

All concrete to be of Class "A" unless otherwise specified.

All reinforcing steel shall be of # 5 round bars and bent as shown.

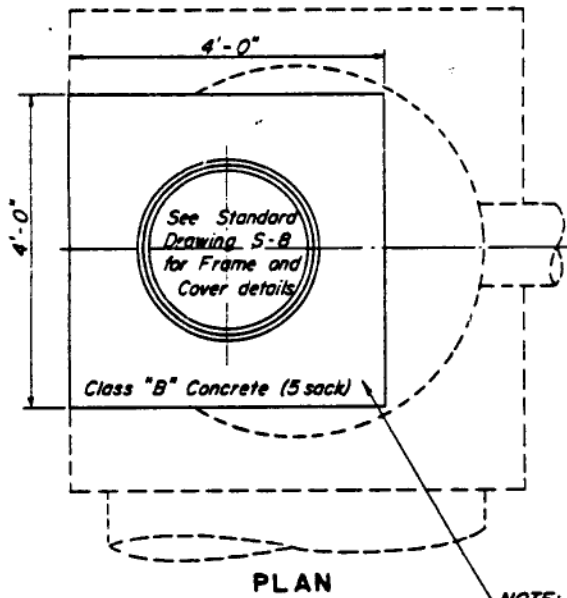
Pipe shall be as specified or as directed by the Engineer.

Manhole casting shall be to specifications for "Standard Manhole Frame and Cover" - Manhole cover shall have cast thereon in raised letters "DRAIN", lettering to be 3" in height and raised $\frac{1}{8}$ ".

All work shall conform to the applicable sections of the specifications entitled "Standard Specifications, State of California, Department of Transportation", current edition.

REVISED JUL '89

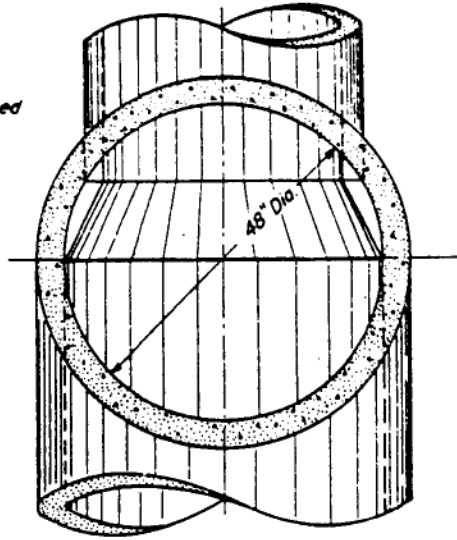
APPROVED BY THE CITY COUNCIL <i>[Signature]</i> 65	STANDARD DRAINAGE STRUCTURES JUNCTION BOX	DATE Jan. 12, 1963
CITY CLERK <i>[Signature]</i>		DRAWN Hillis
APPROVED <i>H.E. Bergon</i> CITY ENGINEER	CITY OF BAKERSFIELD CALIFORNIA ENGINEERING DEPARTMENT	CHECKED J.D.H.
		SCALES None
		S-19



PLAN

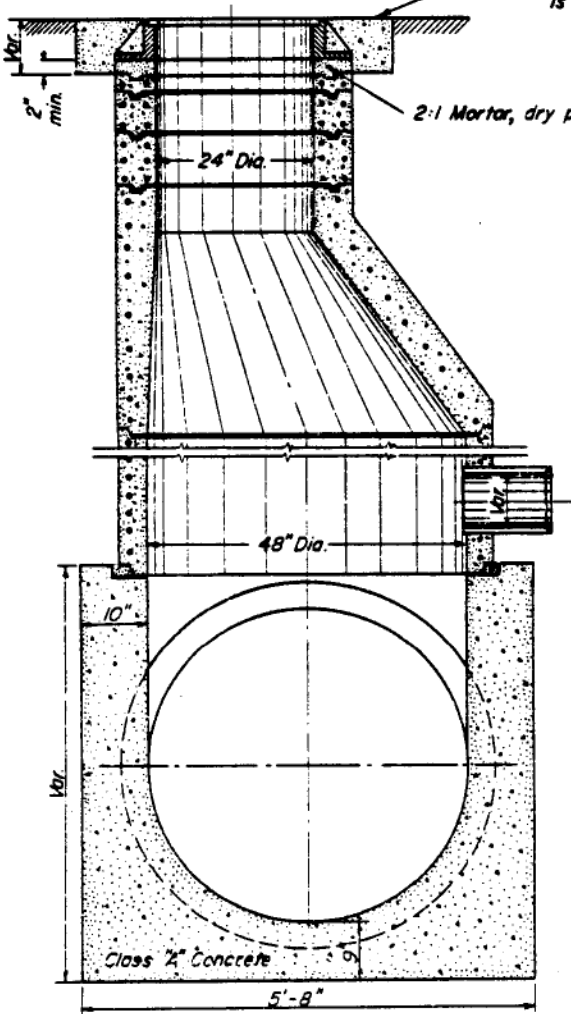
The upper portions of incoming and outgoing sewers shall be removed and the broken edges shall be plastered smooth with cement mortar.

Transition between inverts shall be a smooth warped surface.



SECTION

NOTE: P.C.C. slab not to be poured until paving is in place.



SECTION

GENERAL NOTES:

All work shall conform to the applicable sections of the specifications entitled "Standard Specifications, State of California, Department of Transportation", current edition.

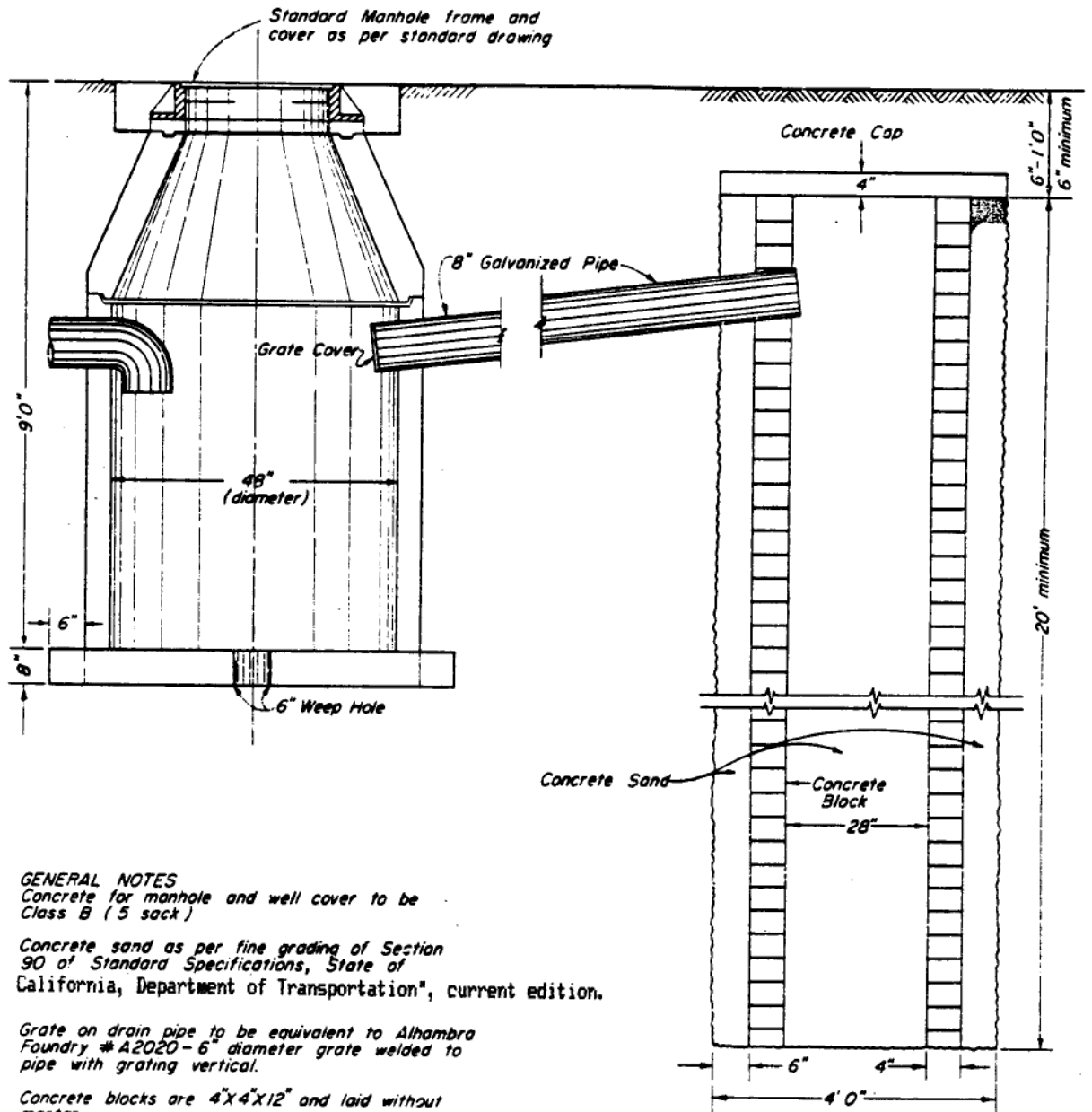
Mortar shall consist of one part portland cement to two parts pf clean, well graded sand.

Joints shall be filled with mortar and neatly raked or wiped on inside of pipe.

Precast reinforced manhole sections shall be constructed in accordance with the provisions of ASTM C-478, current edition.

REVISED JUL '89

APPROVED BY THE CITY COUNCIL <i>[Signature]</i> 10-65	STANDARD MANHOLE TYPE "B"	DATE 11-12-64
<i>[Signature]</i> CITY CLERK		DRAWN T.J.M. CHECKED J.D.H. SCALES None
APPROVED <i>H.E. Bergan</i> CITY ENGINEER	CITY OF BAKERSFIELD CALIFORNIA ENGINEERING DEPARTMENT	S-21



GENERAL NOTES

Concrete for manhole and well cover to be Class B (5 sack)

Concrete sand as per fine grading of Section 90 of Standard Specifications, State of California, Department of Transportation, current edition.

Grate on drain pipe to be equivalent to Alhambra Foundry #A2020-6" diameter grate welded to pipe with grating vertical.

Concrete blocks are 4"x4"x12" and laid without mortar.

REVISED JUL 1989

APPROVED BY THE CITY ENGINEER <i>Feb 8 65</i>	STANDARD DRAINAGE WELL TYPE "B"	DATE June 30, 1963
CITY CLERK <i>[Signature]</i>		DRAWN Hills
APPROVED <i>H.E. Berger</i> CITY ENGINEER	CITY OF BAKERSFIELD CALIFORNIA ENGINEERING DEPARTMENT	CHECKED J. J. H.
		DELETED None
		S-24