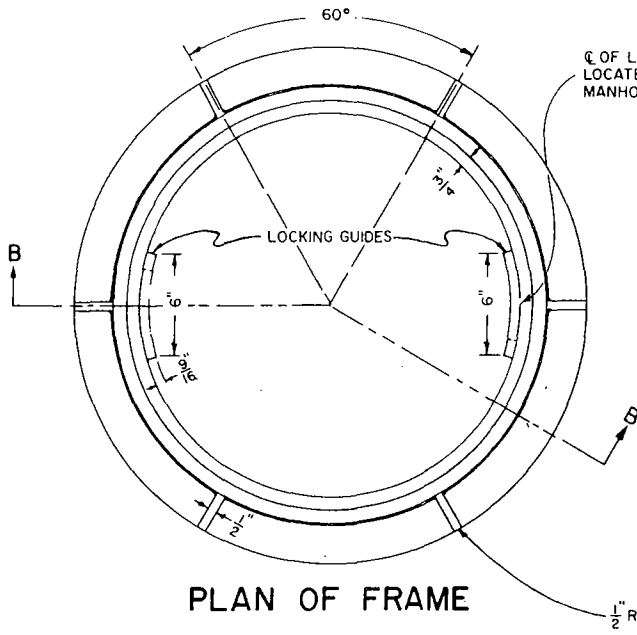


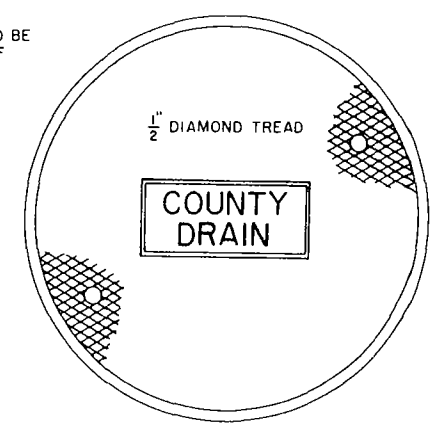
DRAWN BY: C.E. WHITE, 3-53. CHECKED BY: W.B. DUTHIE, 3-53.
 REV. 5-68: ADDED NOTE 1, AND NOTES 4 THRU 9; ADDED PAGE 2.



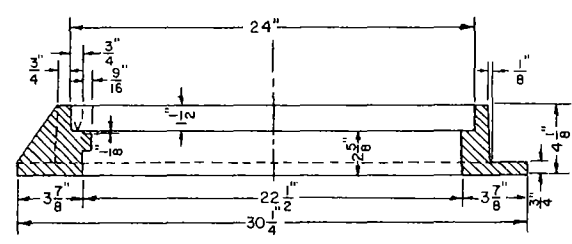
PLAN OF FRAME

CL OF LOCKING GUIDES TO BE LOCATED AT 60° TO CL OF MANHOLE STEPS.

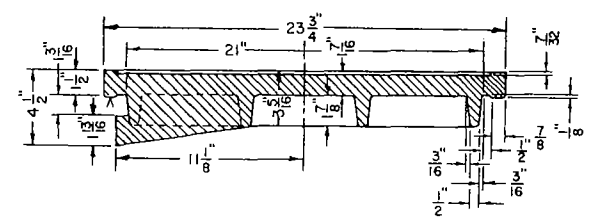
1/2" RIBS - 6 REQUIRED



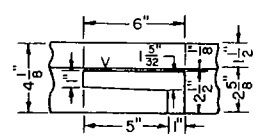
PLAN OF COVER
TOP VIEW



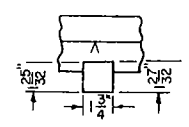
SECTION B-B



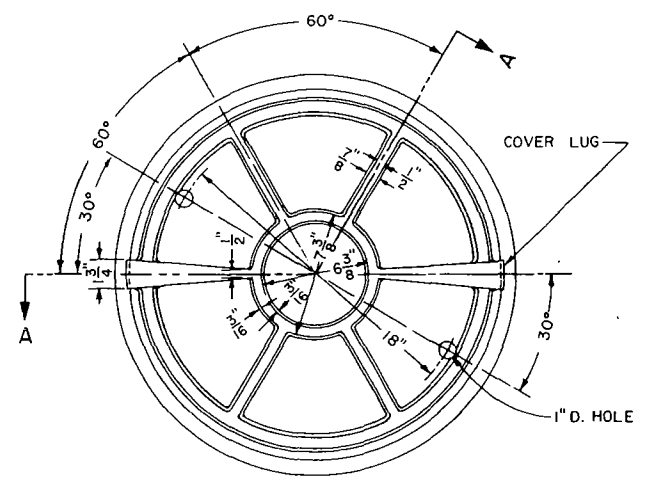
SECTION A-A



LOCKING GUIDE
DETAIL



COVER LUG
DETAIL



PLAN OF COVER
BOTTOM VIEW

NOTES:

1. FRAME AND COVER SHALL BE CAST IRON.
2. MACHINE SEATS AND GRIND LUGS SMOOTH.
3. WEIGHT OF FRAME = 150LB., WEIGHT OF COVER = 215LB..
4. ALL CASTING RADII 1/8" UNLESS SPECIFIED.
5. PLACE ALL RAILS ON CLASS "B" MORTAR, 1/2" MIN.
6. USE 60LB. RAILS FOR S=2'-6" TO 4'-6"; 80LB. RAILS FOR S=5'-0" TO 6'-0".
7. 7/8" MIN. WHEN USING 60LB. RAILS; 9/8" MIN. WHEN USING 80LB. RAILS.
8. PLACE MANHOLE FRAME ON CLASS "B" MORTAR, 1/2" MIN.
9. MANHOLE FRAME AND COVER MAY BE USED IN TRAFFIC AREAS.

LOS ANGELES COUNTY ROAD DEPARTMENT

MANHOLE FRAME & COVER N° II

STANDARD PLAN

APPROVED

J. L. [Signature]

ROAD COMMISSIONER

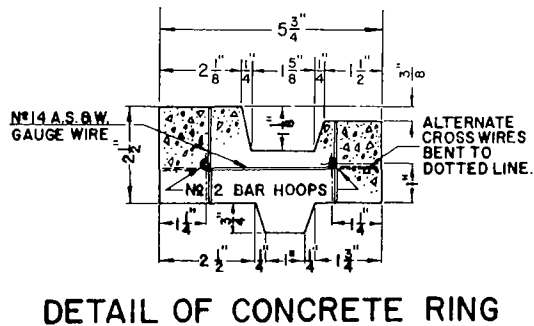
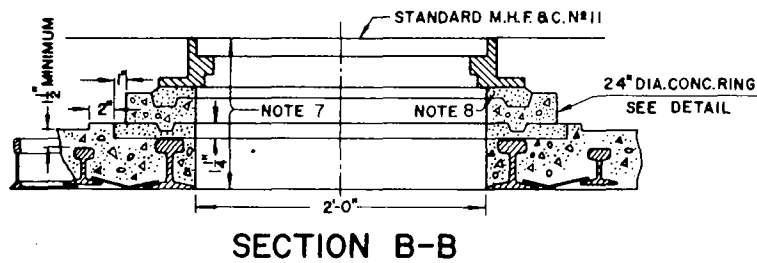
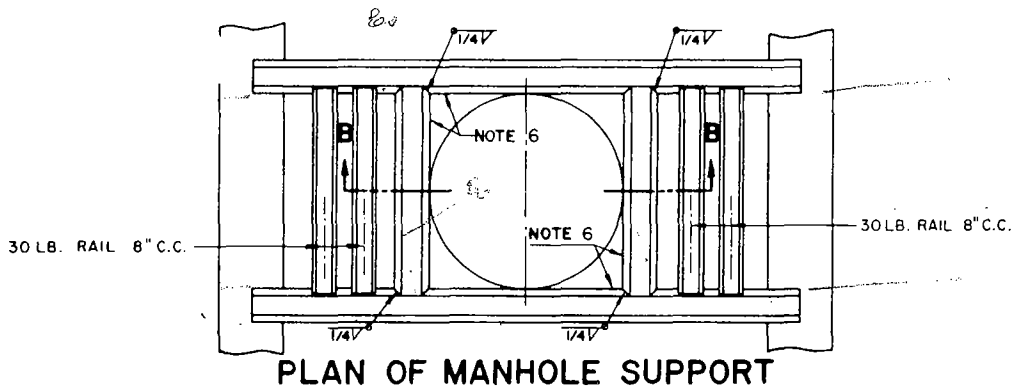
1 Dec 67

DATE

74-11

PAGE 1 OF 2

REVISED 5-68



DRAWN BY: F. KOGA, 9-61. CHECKED BY: R. SADLEIR, 9-61.
REV. 3-69: TRANSFERRED FROM STD. NO. 60-13.

LOS ANGELES COUNTY ROAD DEPARTMENT

MANHOLE FRAME & COVER NO. 11

STANDARD PLAN

74-11

PAGE 2 OF 2

REVISED 3-69