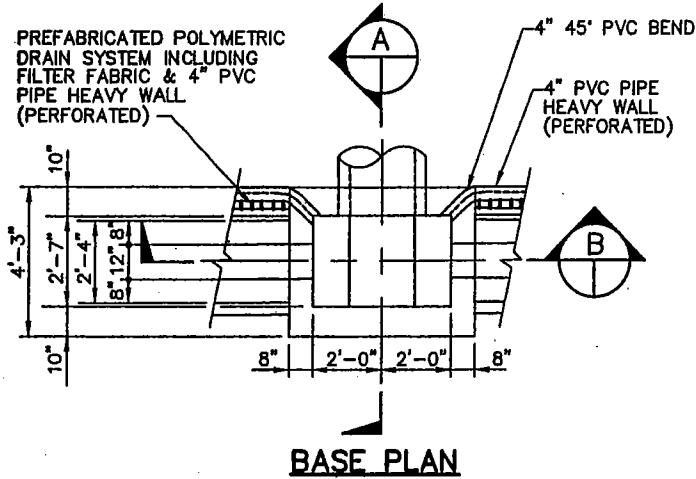
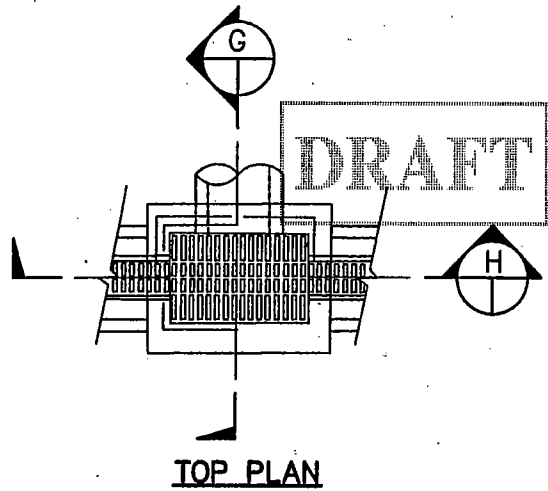


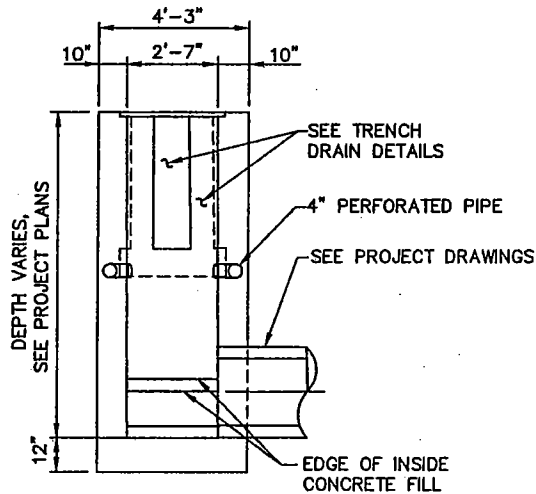
PREFABRICATED POLYMERIC DRAIN SYSTEM INCLUDING FILTER FABRIC & 4" PVC PIPE HEAVY WALL (PERFORATED)



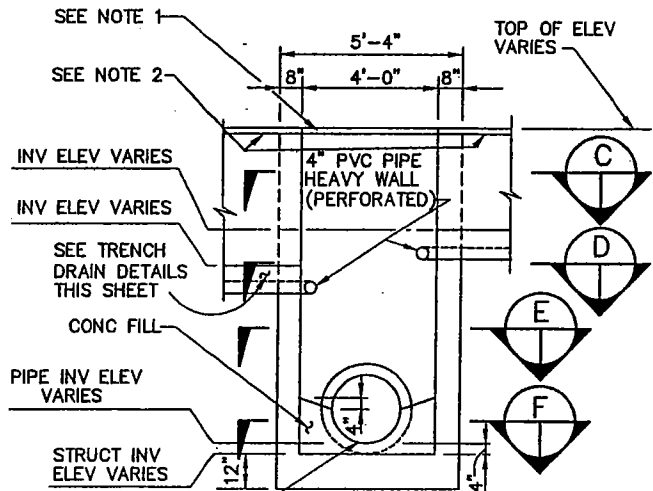
BASE PLAN



TOP PLAN



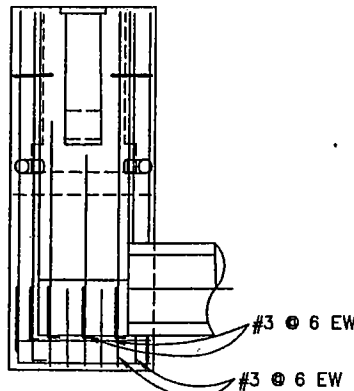
SECTION A



SECTION B

NOTES:

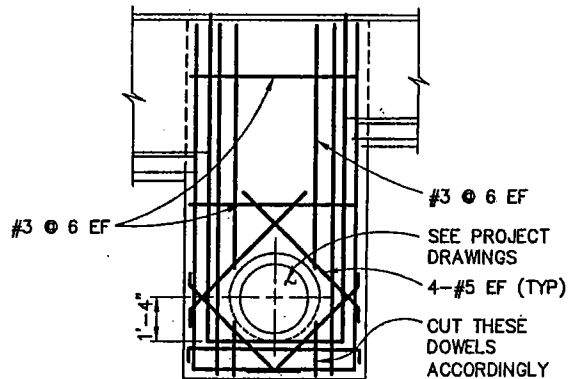
1. NEENAH R4990-KA2 FOUNDRY DUCTILE IRON TRENCH GRATE & ANGLE FRAME. GRATE SHALL BE BOLTED TO ANGLE (2'-7" WIDE) & CONSTRUCTED IN ACCORDANCE WITH MANUFACTURER'S RECOMMENDATIONS.
2. NEENAH R4999-DA FOUNDRY DUCTILE IRON TRENCH GRATE & ANGLE FRAME. GRATE SHALL BE BOLTED TO ANGLE (15" WIDE) & CONSTRUCTED IN ACCORDANCE WITH MANUFACTURER'S RECOMMENDATIONS.
3. CONCRETE SHALL BE CLASS 560-C-3250 WITH A MAXIMUM SLUMP OF 5", FC'=3250 P.S.I. COMPRESSIVE STRENGTH AT 28 DAYS, UNLESS OTHERWISE NOTED ON THE CONTRACT PLANS, REINFORCING STEEL IF REQUIRED SHALL BE DEFORMED REBARS WITH Fy EXCEEDING 60,000 PSI, ASTM A615 AND ASTM A706, GRADE 60. PLACING OF REINFORCEMENT AND SPLICING LENGTHS SHALL CONFORM TO ACI CODES 318-13.



WALL REINFORCING

SECTION G

CONCRETE INLET STRUCTURE



WALL REINFORCING

SECTION H

THE PORT OF LONG BEACH ENGINEERING DIVISION

REVISIONS	
NO.	DATE
△	
△	
△	

TRENCH DRAIN		
APPROVED BY: _____	R.E. NO.: _____	DATE: _____
CHIEF HARBOR ENGINEER		

STANDARD PLAN
D-8
1 OF 3