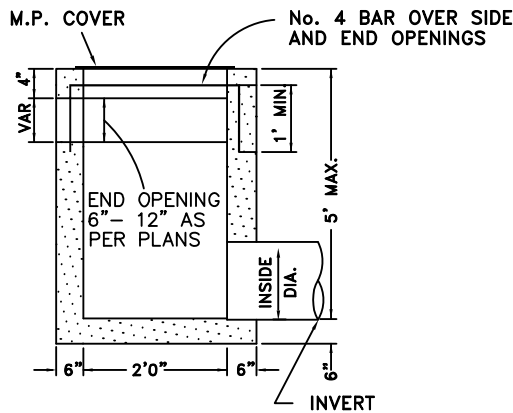
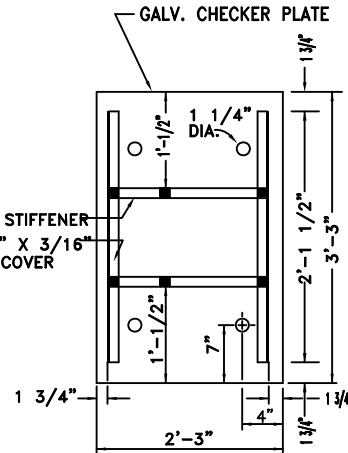


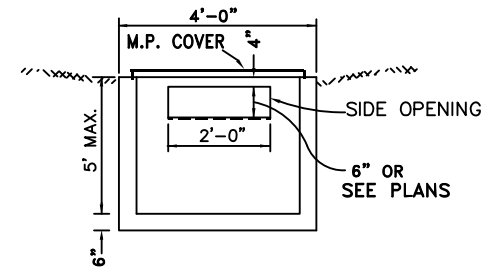
PLAN



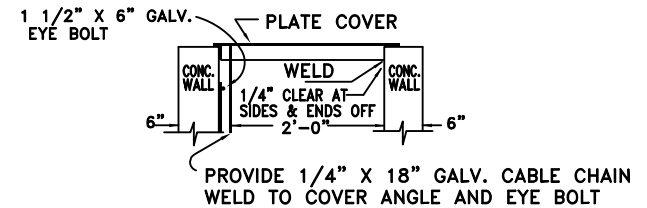
SECTION A-A



(UNDERSIDE)
PLAN



ELEVATION



SECTION
METAL PLATE COVER

ROB JENSEN
DIRECTOR OF PUBLIC WORKS/CITY ENGINEER

NOTES:

1. METAL PLATE COVER TO BE GALVANIZED.
2. THIS STRUCTURE TO BE USED ONLY TO PICKUP ON SITE DRAINAGE ON PRIVATE PROPERTY UNLESS SPECIFICALLY APPROVED BY THE DIRECTOR.
3. DRAIN INLETS NOT WITHIN A PAVED AREA SHALL HAVE A 12 INCH WIDE COLLAR OF 6" THICK CONCRETE.
4. THE INSIDE SURFACE OF FRONT AND BACK WALLS OF THE CATCH BASIN SHALL NOT DEVIATE MORE THAN TWO INCHES IN VERTICAL ALIGNMENT
5. SLOPE FLOOR 2 INCHES TO OUTLET.
6. CONCRETE SHALL BE CLASS A, SIX SACK.
7. PROVIDE END OR SIDE OPENINGS AS SHOWN ELSEWHERE ON PLANS OR CROSS SECTIONS.
8. TOP OF ALL WALLS SHALL BE FINISHED TO A LEVEL PLAN TO PROVIDE EVEN BEARING FOR PLATE COVER.
9. SEE DETAIL DR-1 FOR REINFORCEMENT REQUIREMENTS.



DEPARTMENT OF
PUBLIC WORKS

DROP INLET TYE "F"

SCALE: NONE
REVISED: MARCH 2007
DRAWN BY: STAFF
APPROVED BY: R JENSEN

DR-3