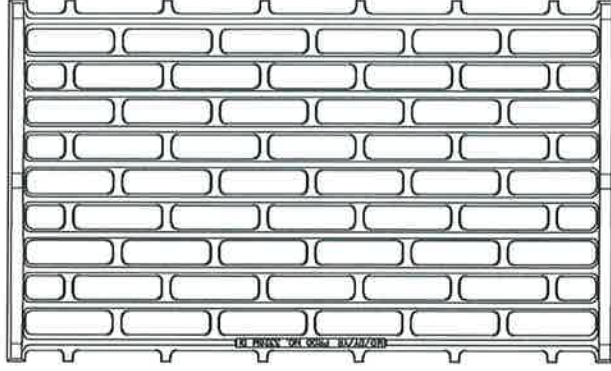
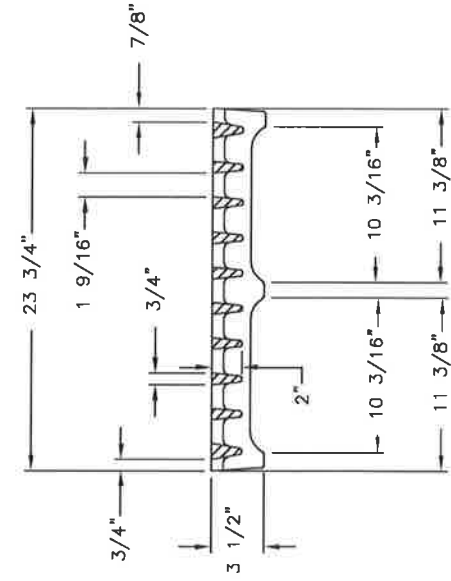
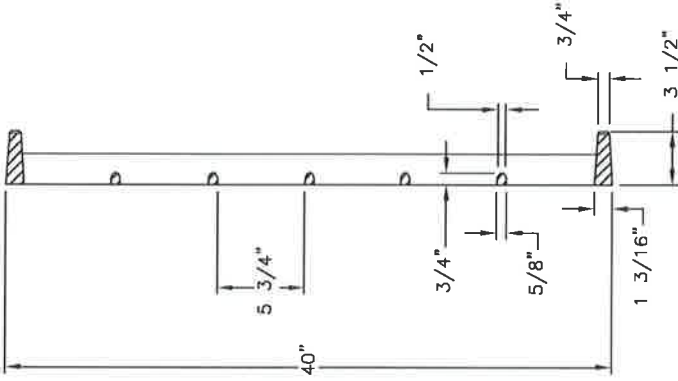
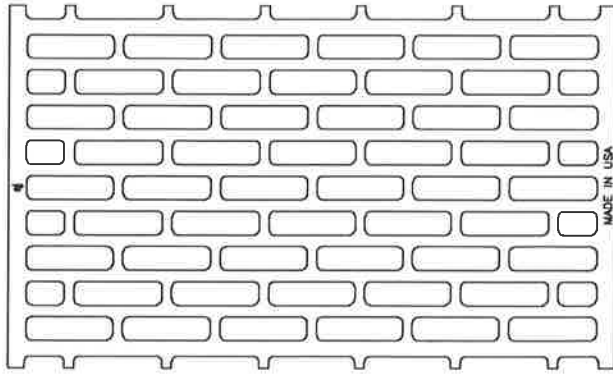


3326M Grate



SECTION

SECTION

Product Number

00332631

Design Features

- Materials: Ductile Iron (80-55-06)
- Load Rating: Medium Duty
- Open Area: 529 sq in
- Coating: Undipped
- Designates Machined Surface

Certification

- ASTM A536
- Country of Origin: USA

Drawing Revision

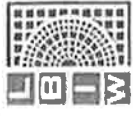
10/26/2004 Designer: JJJ
10/20/2021 Revised By: MAH

Disclaimer

Weights (lbs/sq ft) dimensions (inches/mm) and drawings provided for your guidance. We reserve the right to make specifications without prior notice.
COMMENT: This drawing is the property of E.J. GROUP, Inc. and it encodes confidential information. Registered marks, patents, trade secret information, and/or know-how that is the property of E.J. GROUP, Inc. Copyright © 2021 E.J. GROUP, Inc. All rights reserved.

Contact

800.626.4653
ejco.com



LBIW Inc.
 2020 WEST 14TH STREET
 LONG BEACH, CA, 90813
 Tel No : (562) 432-5451
 Fax No : (562) 435-5929
 www.lbiw.com

PRODUCT NUMBER

**TYPE 24
 FRAME
 WITH HEADED
 STUD**

LOAD RATING

SPECIFICATIONS

MATERIAL : ASTM A36
 COATING : ASTM A123
 (GALVANIZING)
 : MILL FINISH
 (UNCOATED)

MADE IN USA

EST. WEIGHT

47 LBS (21 KG)

STANDARD PLAN REFERENCE

*CALTRANS D77A

DRAWN

DATE

EB

03-27-09

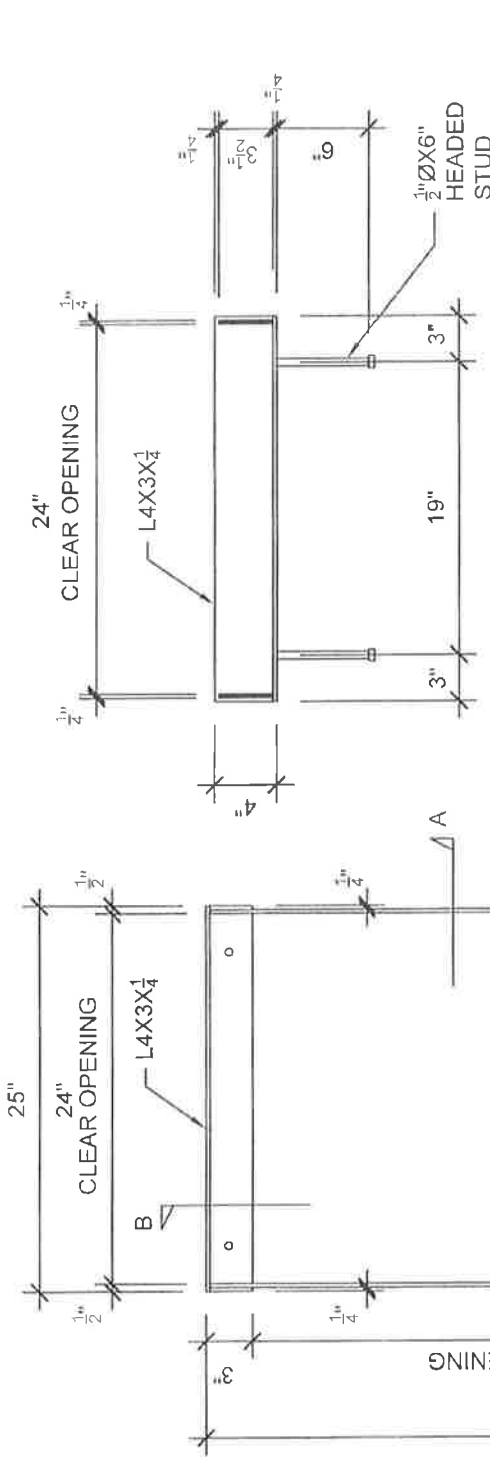
REVISED

DATE

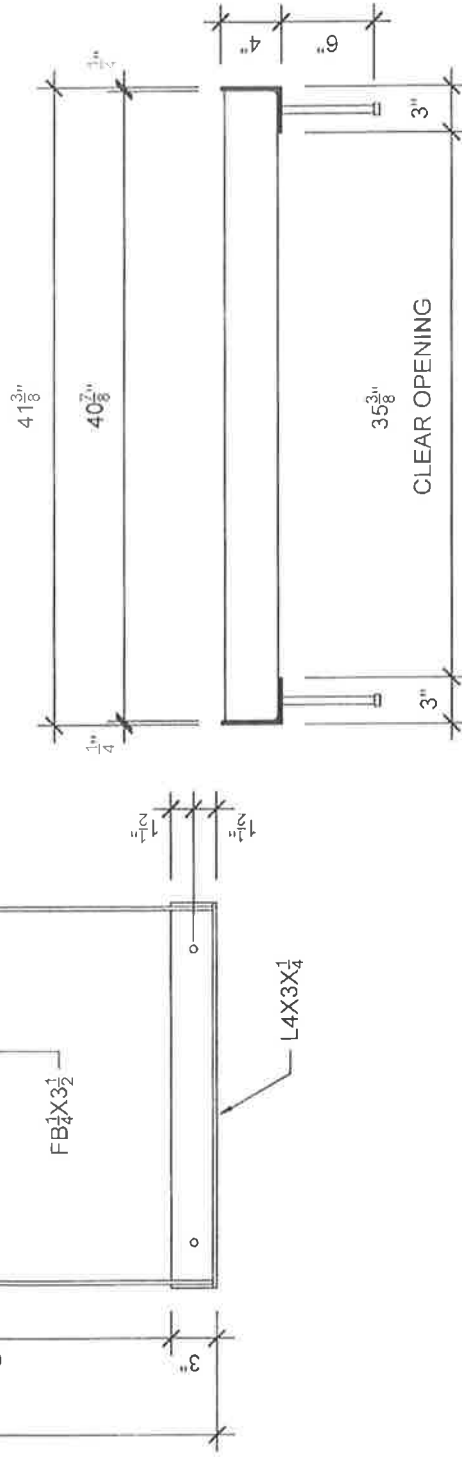
05-18-11

REFERENCE INFORMATION

LBIW CATALOG
 SECTION 07



SECTION A



SECTION B

TYPE 24 FRAME DETAILS
 (For all Rectangular Grates)