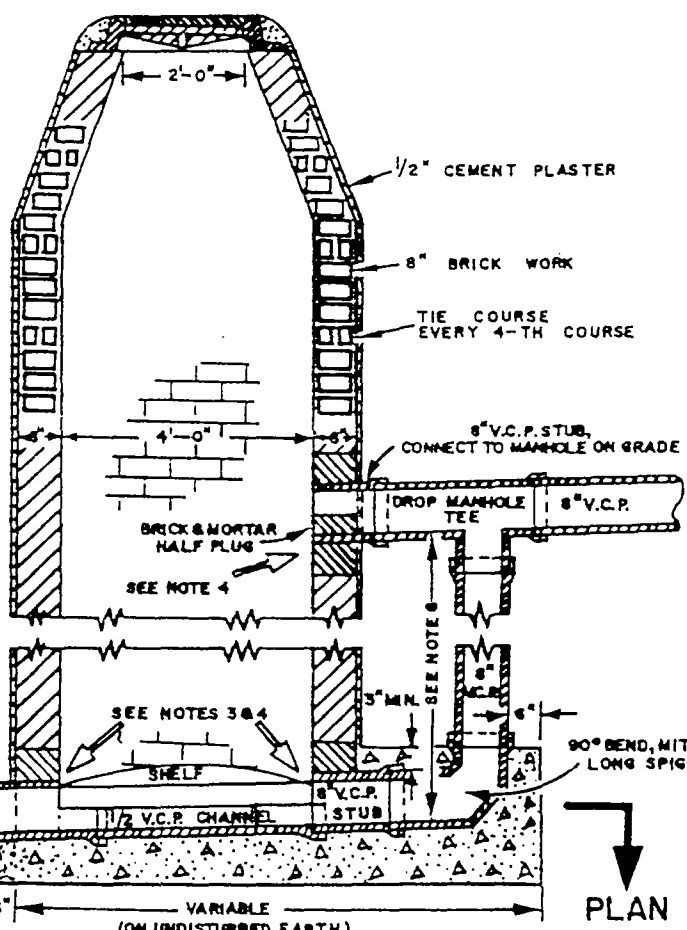
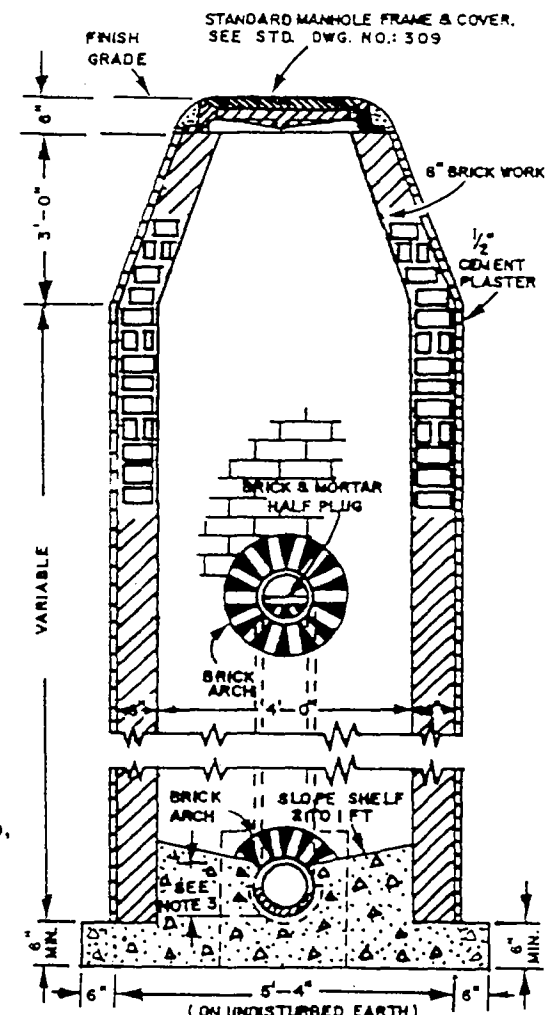


- NOTES:
- 1-CLASS "B" CONCRETE TO BE USED. (5.0 SACK.)
  - 2-PIPE & FITTINGS TO BE 8" MIN. INSIDE DIAMETER.
  - 3-1/2" V.C.P. CHANNEL TO BE SET TO GRADE IN CONCRETE-FORMED INVERT WITH A HEIGHT EQUAL TO PIPE DIAMETER.
  - 4-TURN A BRICK ARCH AROUND EVERY PIPE OPENING INTO MAN HOLE
  - 5-ALL BRICK IS TO BE WHOLE, SOUND, & HARD BURNED AND MUST OTHERWISE CONFORM TO SUCH SPECIFICATIONS AS INDICATED BY THE CITY ENGINEER.
  - 6-3.0' DESIREABLE MINIMUM VERTICAL DROP (NO VERTICAL JOINT ENCASUREMENT).
  - 1.82' ABSOLUTE MINIMUM, VERTICAL JOINTS TO BE ENCASED BETWEEN 1.82' & 3.0'.



SECTION A-A



SECTION B-B

CITY OF COLTON  
PUBLIC WORKS DEPT.

DROP MANHOLE  
BRICK CONSTRUCTION, "T" DROP

DRAWN BY: T. FARKAS	SCALE: 1" = 3'-0"	DRAWING NO.
CHK'D: <i>DAB</i>	DATE: OCTOBER 1963	
APP'D: <i>L. Glenn Wilson</i>		302