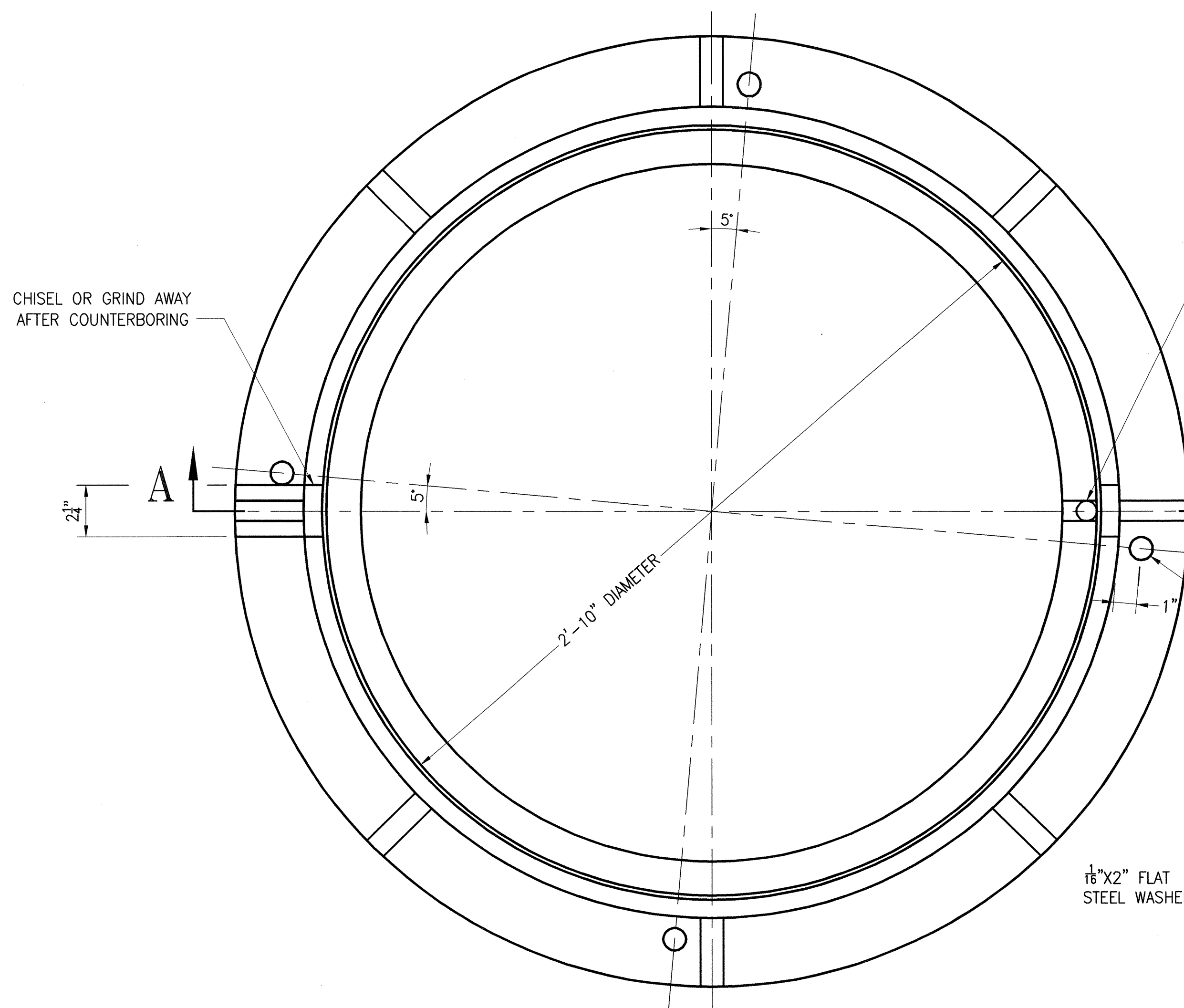
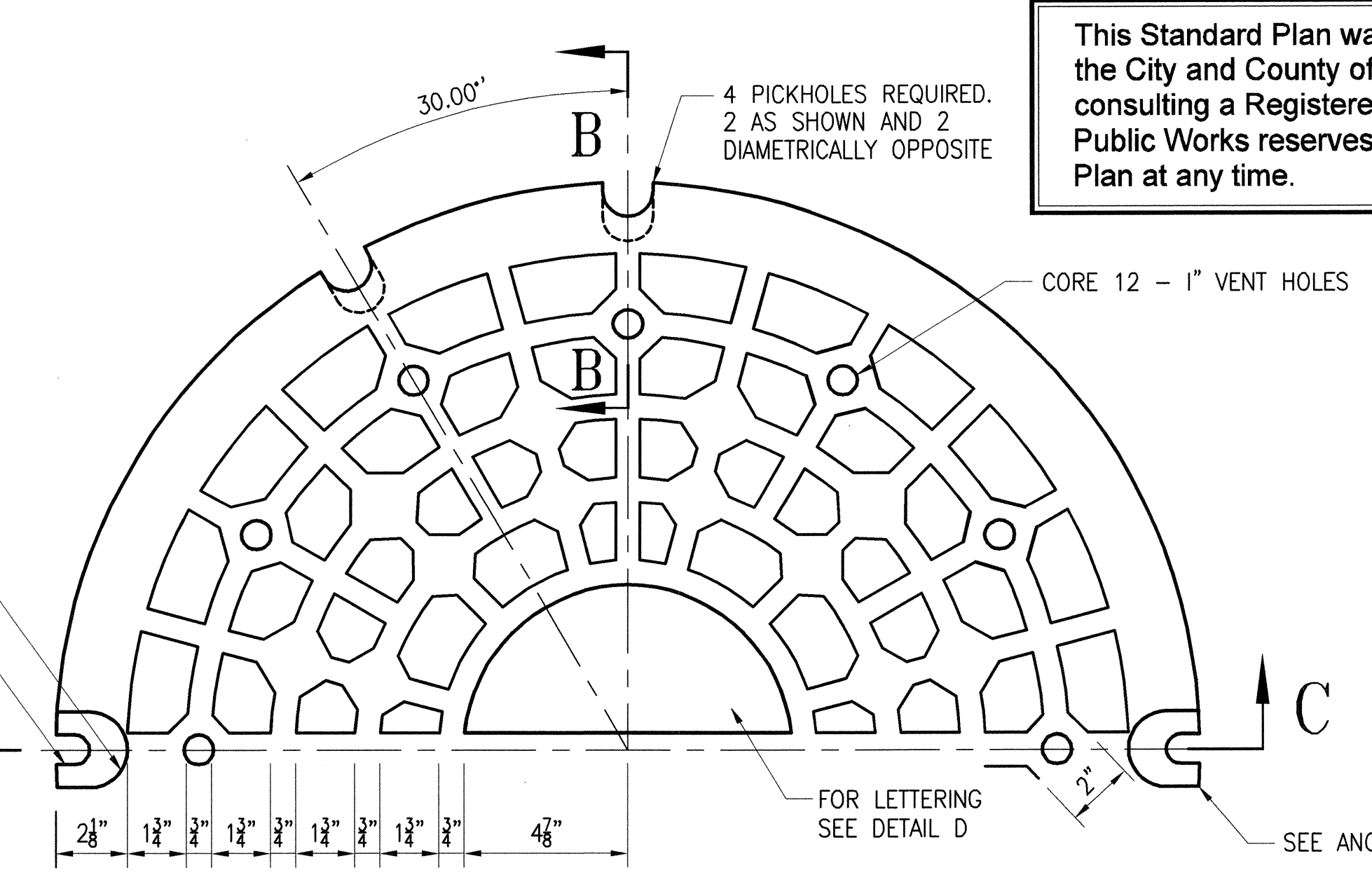


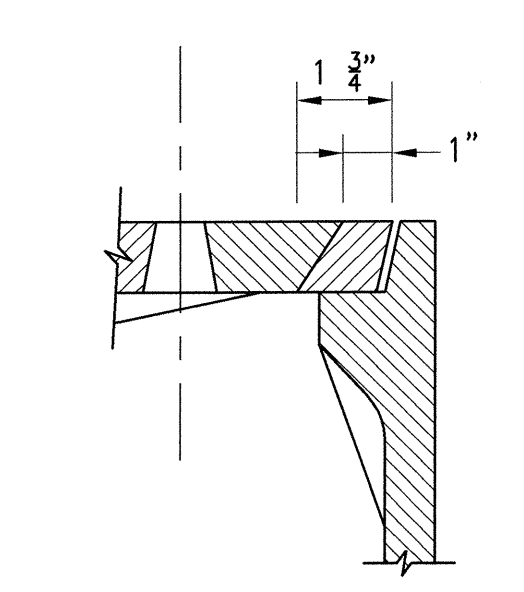
This Standard Plan was developed for use on public works projects in the City and County of San Francisco, and shall not be used without consulting a Registered Professional Engineer. The Department of Public Works reserves the right to make revisions to this Standard Plan at any time.



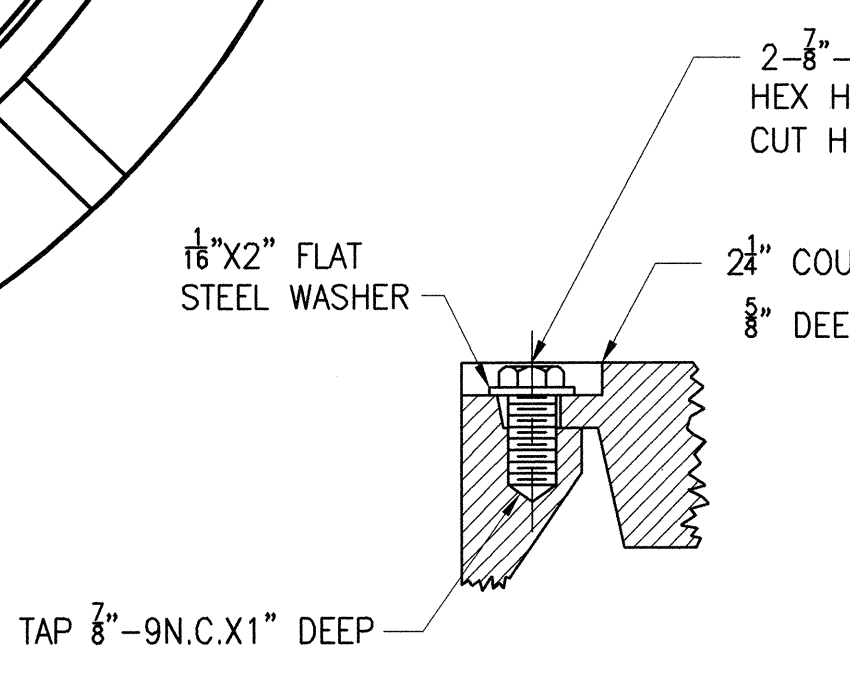
PLAN VIEW OF FRAME



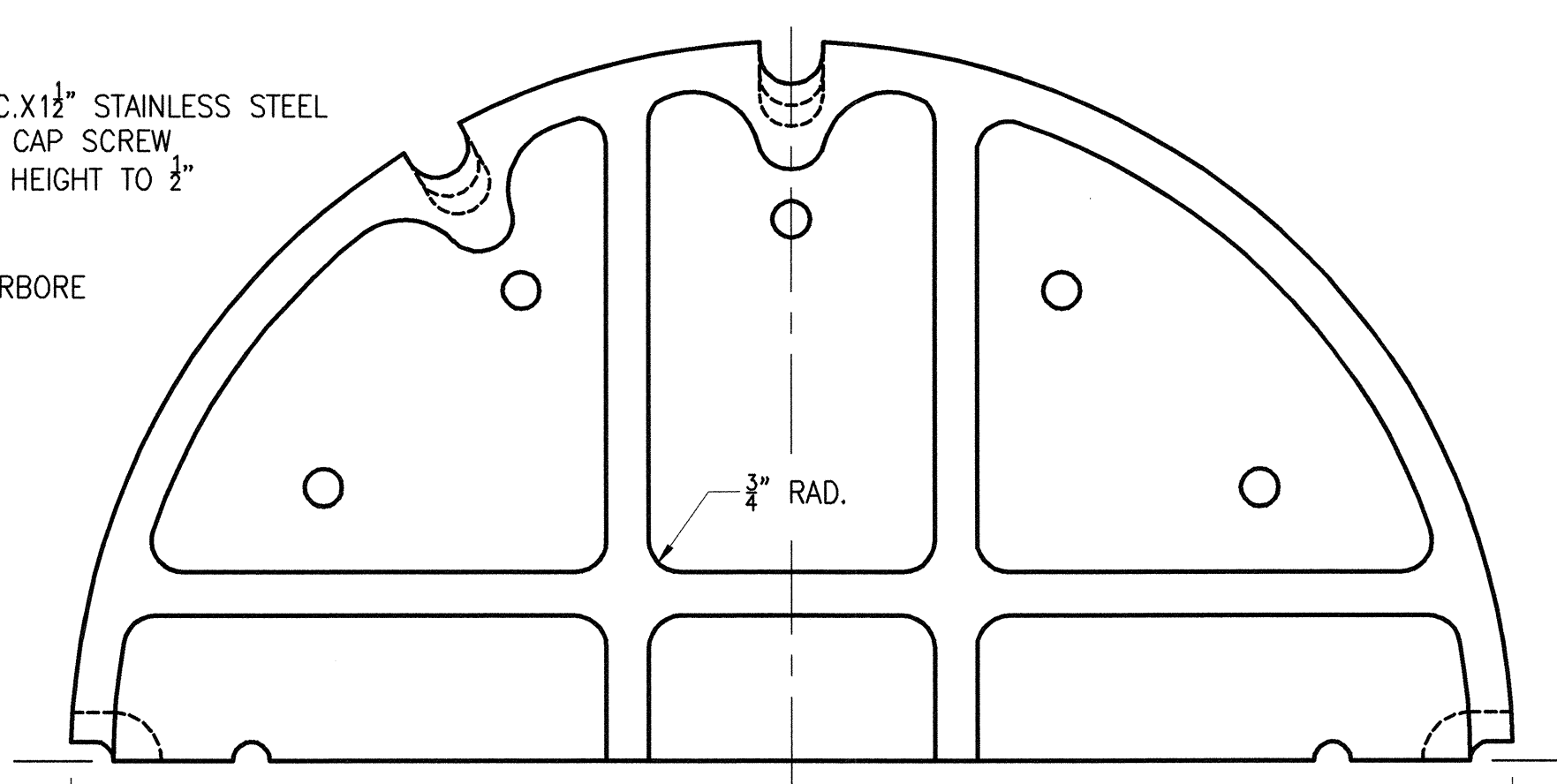
HALF PLAN - TOP OF COVER



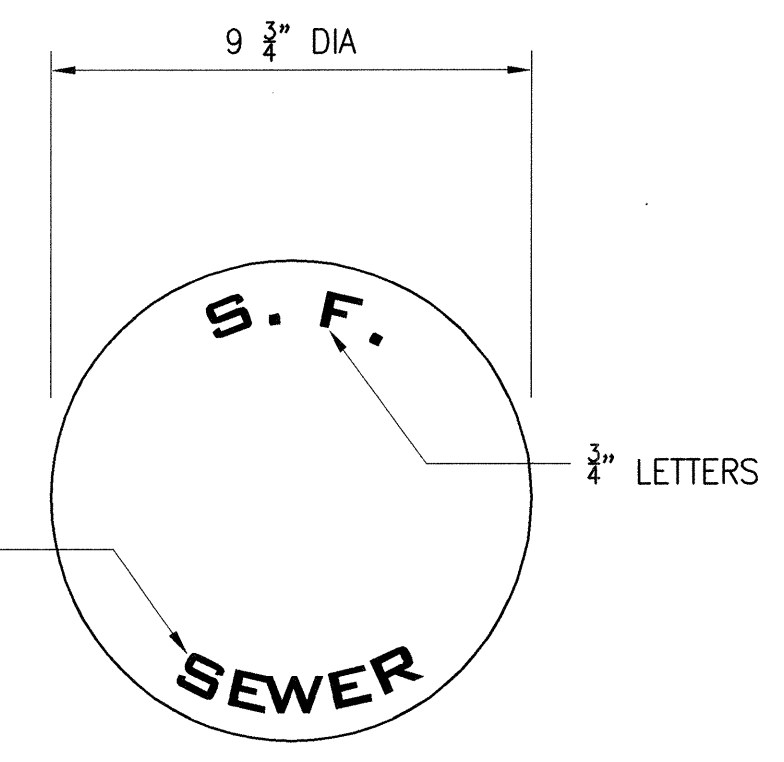
SECTION B-B



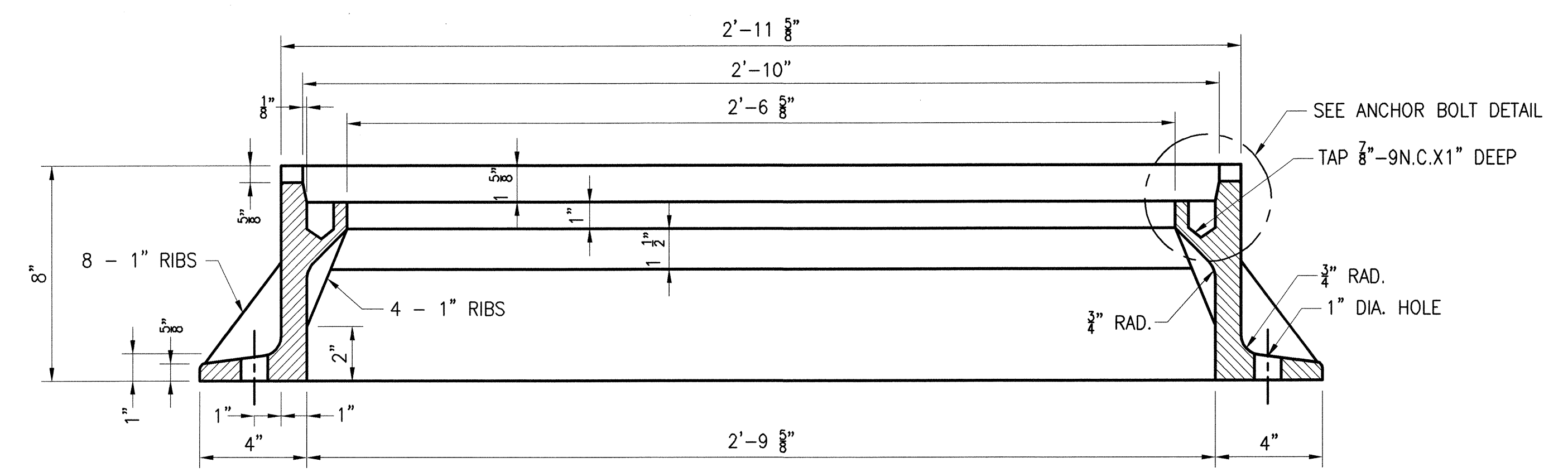
ANCHOR BOLT DETAIL



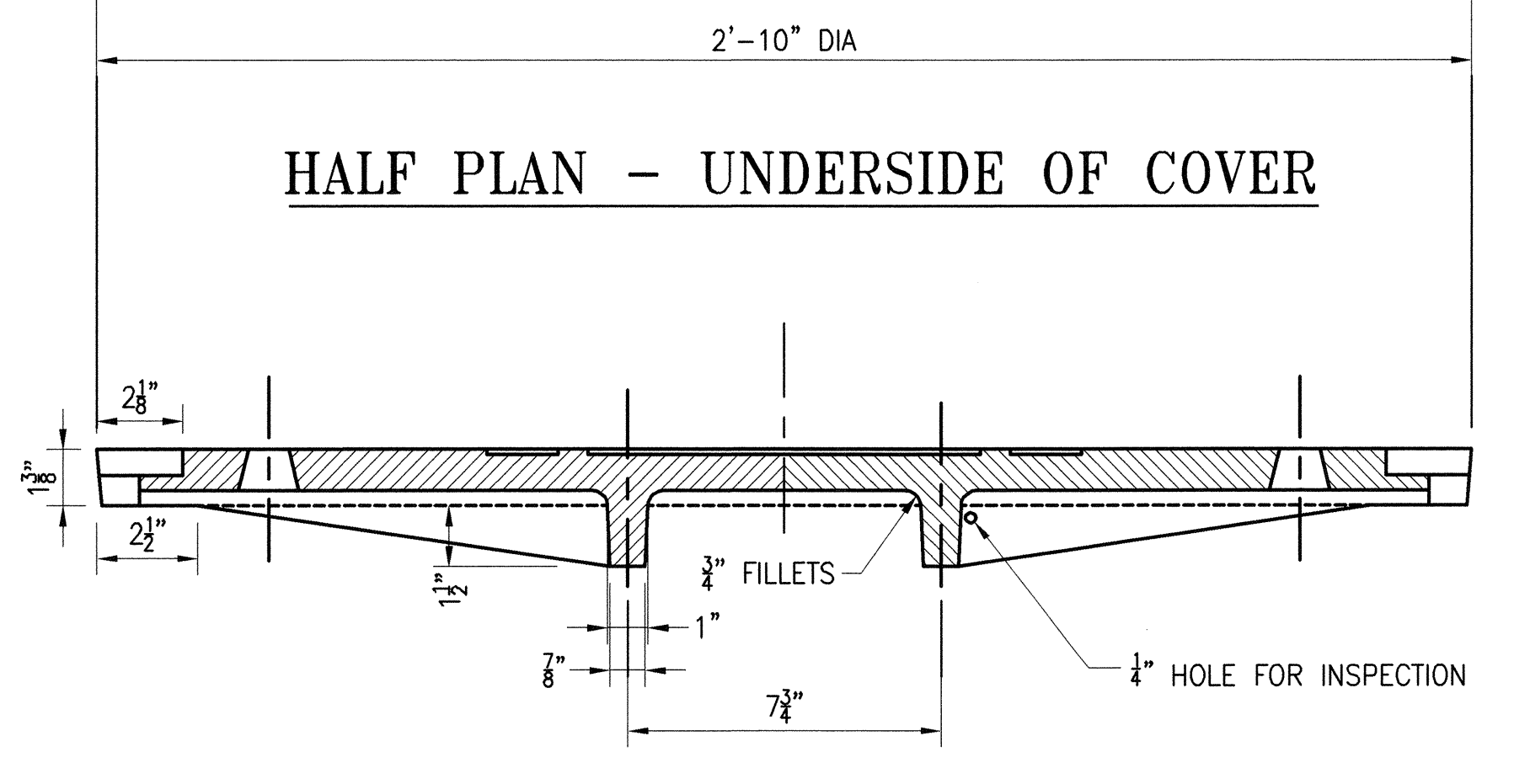
HALF PLAN - UNDERSIDE OF COVER



DETAIL D-D



SECTION A-A

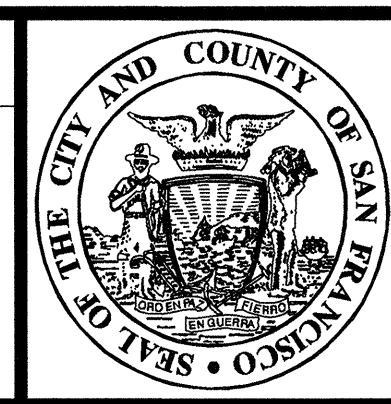


SECTION C-C

NOTES : MATERIAL FOR FRAME SHALL BE "GRAY CAST IRON" IN ACCORDANCE WITH A.A.S.H.O. M-105 CLASS 30. MATERIAL FOR COVER SHALL BE CAST STEEL IN ACCORDANCE WITH A.S.T.M. STANDARD SPECIFICATIONS FOR CARBON-STEEL CASTING", DESIGNATION A27, CLASS 60-30

NO.	DATE	DESCRIPTION	BY	APP.
TABLE OF REVISIONS				
CHECK WITH TRACING TO SEE IF YOU HAVE LATEST REVISION				

REFERENCE INFORMATION & FILE NO. OF SURVEYS



BUREAU OF ENGINEERING
 DEPARTMENT OF PUBLIC WORKS
 CITY AND COUNTY OF SAN FRANCISCO

REVIEWED:	DATE:	PLANS APPROVAL DATE:	APRIL 30, 2007
ID	12/2006	<i>[Signature]</i>	4/30/07
DRAWN:	DATE:	SECTION MANAGER	
AM	12/2006	<i>[Signature]</i>	4/30/07
CHECKED:	DATE:	DEPUTY BUREAU MANAGER	
KS	12/2006	<i>[Signature]</i>	
		BUREAU MANAGER	

STANDARD PLAN	OLD FILE NO.
HYDRAULICS	42,111 CH 1
30" MANHOLE FRAME AND COVER	FILE NO.
	87,191
	REV. NO.

Xrefs: V:\0966J Standard Plans & Specs Update\2_Plans\Title_Block\BOE STD Title_Block.dwg
 Dimension Scale: 40
 Model Units: Feet
 Login: carantos
 Measurement Units are English
 V:\0966J Standard Plans & Specs Update\2_Plans\FINAL\HYD\SP-87191.dwg
 Plot Time: Fri, 27 Apr 2007 8:46pm