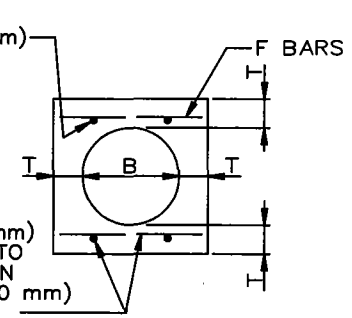
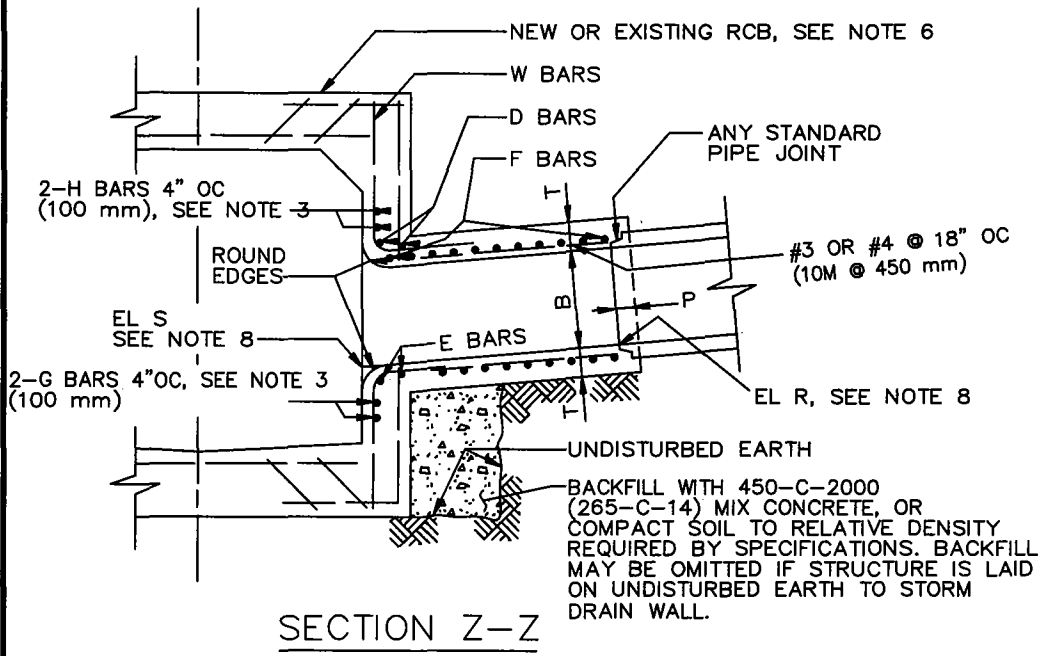


SECTION G-G



PLAN

B	T	D, E, H & G BARS	F BARS
12" (300 mm)	5" (130 mm)	#5 (#16M)	#4 @ 6" (#13M @ 150 mm) OC
15" (375 mm)	5" (130 mm)		
18" (450 mm)	5" (130 mm)		
21" (525 mm)	5" (130 mm)		
24" (600 mm)	5 1/4" (140 mm)		
27" (675 mm)	5 1/2" (140 mm)		
30" (750 mm)	6" (160 mm)	#6 (#19M)	#5 @ 6" (#16M @ 150 mm) OC
33" (825 mm)	6 1/4" (160 mm)		
36" (975 mm)	6 1/2" (170 mm)		
39" (990 mm)	7" (180 mm)		
42" (1050 mm)	7 1/2" (190 mm)		
45" (1125 mm)	7 3/4" (200 mm)		
48" (1220 mm)	8" (210 mm)	#7 (#22M)	#5 @ 6" (#16M @ 150 mm) OC
51" (1275 mm)	8 1/2" (220 mm)		
54" (1350 mm)	9" (230 mm)		
57" (1500 mm)	9 1/4" (240 mm)		
60" (1500 mm)	9 1/2" (240 mm)		
63" (1650 mm)	10" (260 mm)		
66" (1680 mm)	10 1/4" (260 mm)	#7 (#22M)	#5 @ 6" (#16M @ 150 mm) OC
69" (1800 mm)	10 3/4" (280 mm)		
72" (1850 mm)	11" (280 mm)		
78" (1950 mm)	11 3/4" (300 mm)		
84" (2100 mm)	12 1/2" (320 mm)		
90" (2400 mm)	13 1/4" (340 mm)		
96" (2440 mm)	14" (360 mm)	#7 (#22M)	#5 @ 6" (#16M @ 150 mm) OC
102" (2550 mm)	15 1/2" (400 mm)		
108" (2700 mm)	16" (410 mm)		
114" (3000 mm)	16 1/2" (420 mm)		
120" (3050 mm)	17" (430 mm)		
126" (3150 mm)	17" (430 mm)		
132" (3300 mm)	17 1/2" (450 mm)	#7 (#22M)	#5 @ 6" (#16M @ 150 mm) OC
138" (3450 mm)	17 1/2" (450 mm)		
144" (3600 mm)	18" (460 mm)		



SECTION Z-Z

STANDARD PLANS FOR PUBLIC WORKS CONSTRUCTION

PROMULGATED BY THE  
PUBLIC WORKS STANDARDS INC.  
GREENBOOK COMMITTEE  
1984  
REV. 1996, 2009

JUNCTION STRUCTURE - PIPE TO RCB

USE WITH STANDARD SPECIFICATIONS FOR PUBLIC WORKS CONSTRUCTION

STANDARD PLAN

333-2

SHEET 1 OF 2