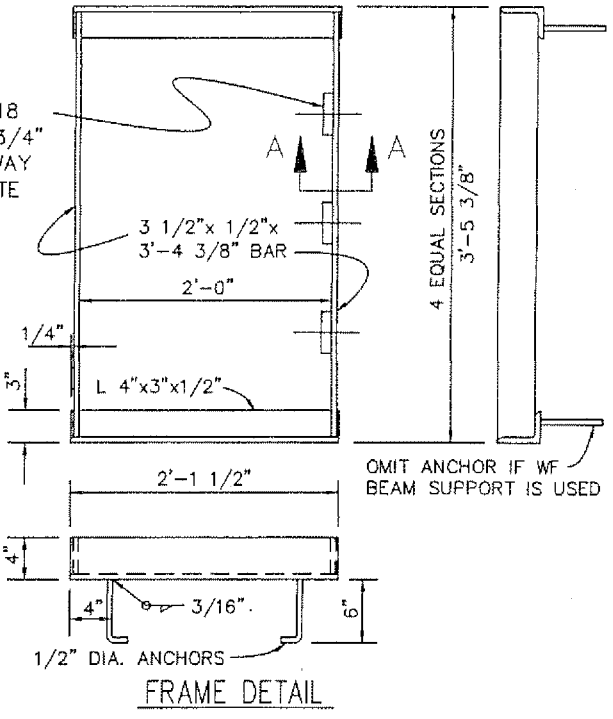


TYPE	NO. BARS	W	X	USAGE
24-9	9	2"	19/16"	USE IN LOCATIONS OFF THE ROADBED ON ALL TYPES OF HIGHWAYS
24-12	12	1 5/8"	1 1/4"	USE WITHIN THE ROADBED ON HIGHWAYS WHERE BICYCLE AND PEDESTRIANS ARE EXCLUDED, OR FOR RURAL CONDITIONS
24-18	18	3/4"	15/16"	USE WITHIN THE ROADBED UNDER URBAN CONDITIONS WHERE BICYCLES AND PEDESTRIANS ARE PERMITTED

TYPE 450-8S (CALTRANS D77B) OR ALHAMBRA A-1546 & 1555

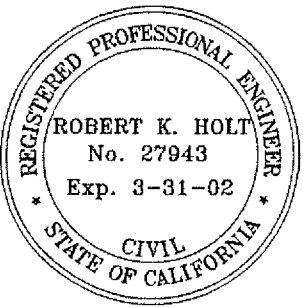
ON FRAMES FOR TYPE 24-18 GRATES, PROVIDE 3'-3"x1"x3/4" BLOCKS. PLACE ON ROADWAY SIDE OR HIGH SIDE OF GRATE OPENING.



TYPE	WEIGHTS	
	WELDED	BOLTED
24-9	200	230
24-12	258	286
24-18	372	400
24" FRAME	90	

GENERAL NOTES:

1. GRATE TYPE NUMBERS REFER TO WIDTH OF GRATE IN INCHES AND NUMBER OF RESPECTIVELY.
2. GRATES AND FRAMES TO BE GALVANIZED.
3. ROUNDED TOP OF BARS OPTIONAL ON ALL GRATES.
4. GRATE SHALL BE PLACED SO THAT BARS ARE PARALLEL TO DIRECTION OF PRINCIPAL SURFACE FLOW.



APPROVED: PUBLIC WORKS DIRECTOR
James W. Rodkey Jr. DATE 9/7/00
 JAMES W. RODKEY, JR.
 APPROVED: CITY ENGINEER
Robert K. Holt DATE 8/31/00
 ROBERT K. HOLT, P.E.

CITY OF
BLYTHE
 STORM DRAIN FRAME
 AND GRATE DETAIL

REVISION	BY	DATE

STANDARD DRAWING NO. SD-502B