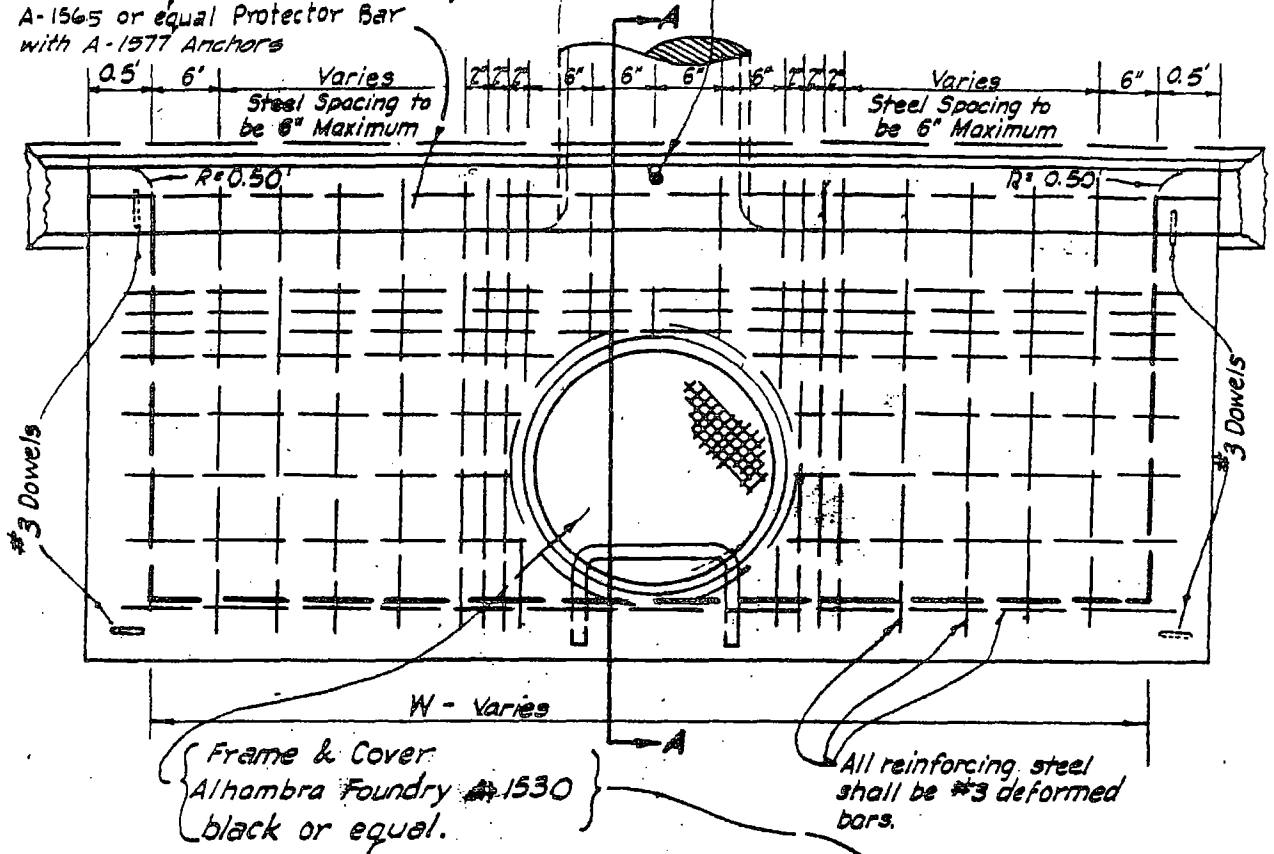


Galv. Steel Face Plate Alhambra Fdry  
A-3911 or equal with Alhambra Fdry  
A-1565 or equal Protector Bar  
with A-1577 Anchors

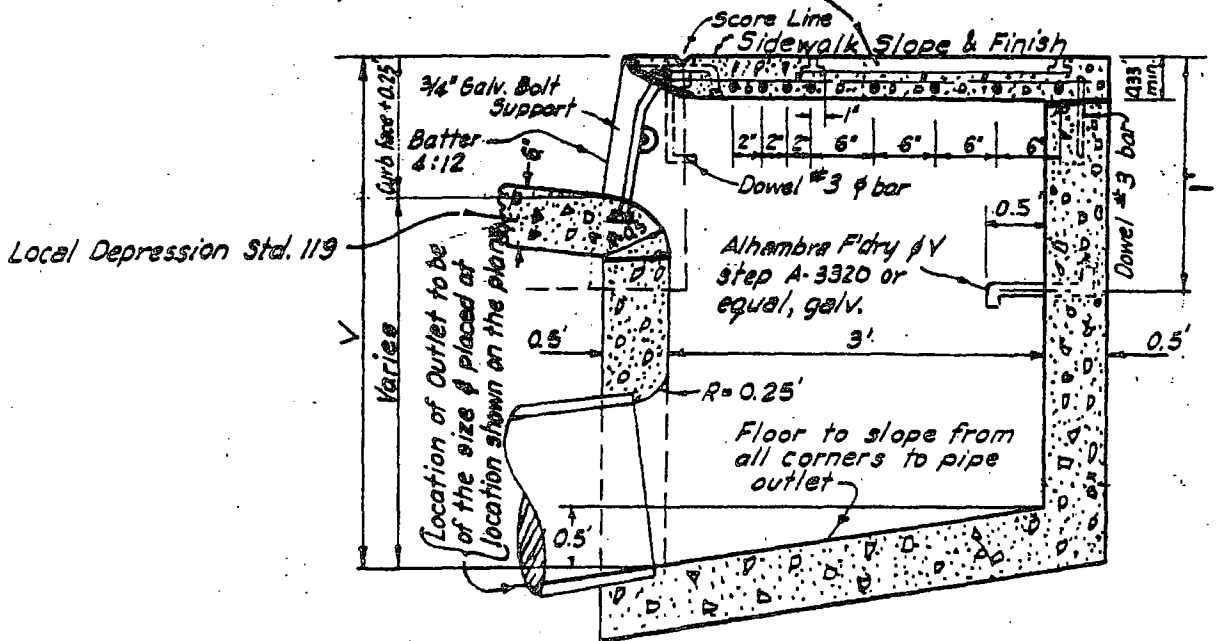
**PLAN**

Alhambra Fdry A-1572 galv.  
Bolt Support W > 5' @ 5' max. o.c.



Frame & Cover  
Alhambra Foundry A-1530  
black or equal.

All reinforcing steel  
shall be #3 deformed  
bars.



**SECTION A-A**

**Notes:**

1. Addition steps required, when depth of basin is 3' or over, at 1.50' o.c. from 1' above floor.
2. Class 500-C-3250 R.C.C. shall be used unless otherwise specified.

|                            |                |                 |
|----------------------------|----------------|-----------------|
| <b>CITY OF MONTECLAIR</b>  |                |                 |
| <b>CATCH BASIN</b>         |                |                 |
| DRWN BY<br>G.E.R.          | CKD BY<br>D.G. | DATE<br>8-31-87 |
| CITY ENGINEER: R.C.E. 2071 |                |                 |

**STD. NO. 118**