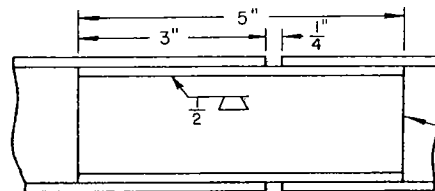


ELEVATION

SECTION A-A



DETAIL OF SLIP JOINT
(FOR GALVANIZED STEEL PIPE)

NOTES:

1. USE SLIP JOINTS ON THE RAILS BETWEEN POSTS THAT STRADDLE AN EXPANSION JOINT.
2. H=16" FOR HAND RAIL ON STEPS, H=21" FOR HAND RAIL ON WALLS; D=10" FOR P.C.C. WALLS, D=24" FOR BLOCK WALLS, D=7" FOR STEPS.
3. COMPLETED STEEL PIPE HAND RAILING UNITS SHALL BE GALVANIZED AFTER FABRICATION.
4. HAND RAIL MAY BE 1 1/2" STANDARD STEEL PIPE OR 1 1/2" ALUMINUM PIPE SCHEDULE 40, ALLOY 6063-T6.
5. FINISH FOR ALUMINUM: ALUMINUM ASSOCIATION C22-A41; ARCH CLASS I, CLEAR (NATURAL) ANODIC COATING 0.7 MIL. AND GREATER. 15% SULFURIC ACID @ 70°±2°F, 12 AMP/FT.²
6. P=W/2 FOR CORNER POST; P=6" MIN. FOR END POST. W=TOP WIDTH OF RETAINING WALL (8" MIN.).
7. POSTS MAY BE SET IN RECTANGULAR OR CIRCULAR SOCKETS 4" MIN. AND 5" MAX. IN ANY DIMENSION.
8. SEE STANDARD PLAN 33 - 01 FOR FURTHER DETAILS OF PIPE HAND RAIL ON STEPS.

LOS ANGELES COUNTY ROAD DEPARTMENT

PIPE HAND RAIL

STANDARD PLAN

88-02

APPROVED

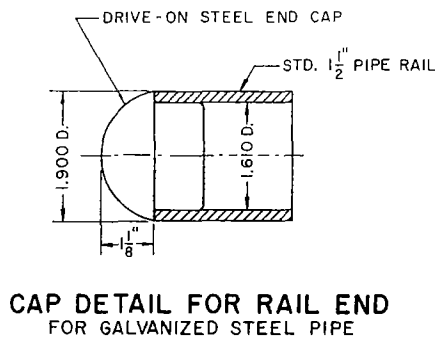
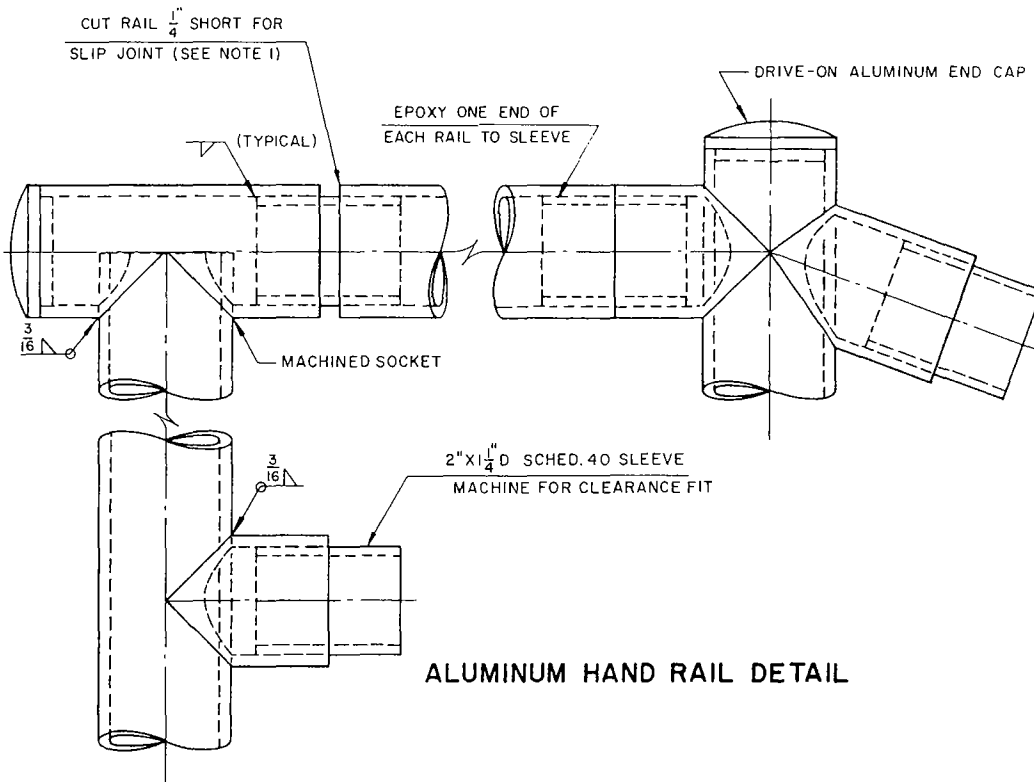
ROAD COMMISSIONER

DATE

PAGE 1 OF 2

REVISED 12-68

DRAWN BY: F. KOGA, 10-67. CHECKED BY: J. HECK, 10-67. REV. 12-68: VARIOUS REVISIONS; ADDED PAGE 2.



DRAWN BY: L.L.A. VOIX 5-68 CHECKED BY: F. KOGA 5-68

LOS ANGELES COUNTY ROAD DEPARTMENT

PIPE HAND RAIL

STANDARD PLAN

88-02

PAGE 2 OF 2