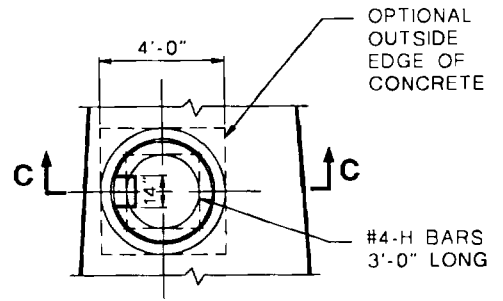
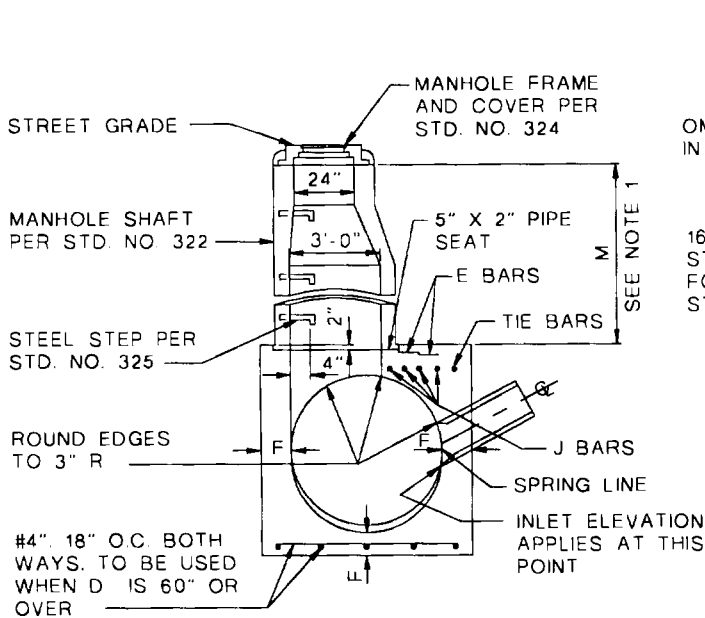


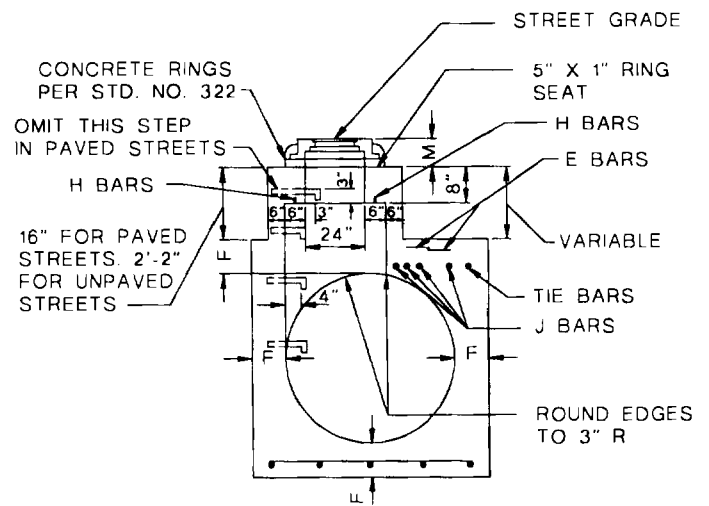
PLAN
(SHAFT NOT SHOWN)



DETAIL N
(RINGS AND COVER NOT SHOWN)

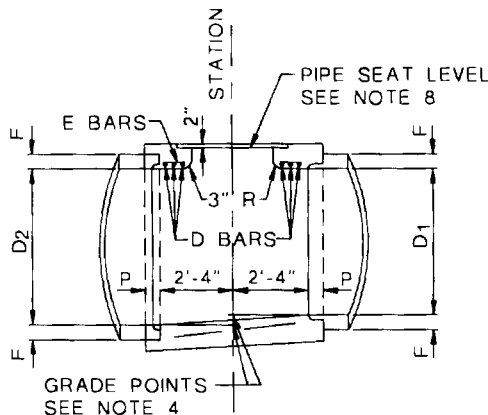


SECTION A - A



SECTION C - C

(SEE NOTE 1)



SECTION B - B

D ₂	F	D ₂	F
36"	6 1/2"	78"	11 3/4"
39"	7"	84"	12 1/2"
42"	7 1/2"	90"	13 1/4"
45"	7 3/4"	96"	14"
48"	8"	102"	15 1/2"
51"	8 1/2"	108"	16"
54"	9"	114"	16 1/2"
57"	9 1/4"	120"	17"
60"	9 1/2"	126"	17"
63"	10"	132"	17 1/2"
66"	10 1/4"	138"	17 1/2"
69"	10 3/4"	144"	18"
72"	11"		

SECTION	PAVED STREET		UNPAVED STREET	
	MAX.	MIN.	MAX.	MIN.
A - A	2'-10 1/2"		3'-6"	
C - C	0'-11"	0'-8 1/2"	1'-4"	1'-3"

CITY OF RANCHO CUCAMONGA, CALIFORNIA

APPROVED BY:

W. J. Mail
CITY ENGINEER
R.C.E. 24953

DATE: 7/2/95

**MANHOLE NO. 2
36" PIPE & LARGER**

USE WITH STANDARD SPECIFICATIONS FOR PUBLIC WORKS CONSTRUCTION

STANDARD PLAN

319

SHEET 1 OF 2

REVISED 6-20-95

NOTES:

1. WHEN DEPTH M FROM STREET GRADE TO THE TOP OF THE BOX IS LESS THAN 2'-10 1/2" FOR PAVED STREETS OR 3'-6" FOR UNPAVED STREETS. CONSTRUCT MONOLITHIC SHAFT PER SECTION C-C AND DETAIL N. SHAFT FOR ANY DEPTH OF MANHOLE MAY BE CONSTRUCTED PER SECTION C-C. WHEN DIAMETER D₁ IS 48" OR LESS CENTER OF SHAFT MAY BE LOCATED PER NOTE 2.
2. CENTER OF MANHOLE SHAFT SHALL BE LOCATED OVER CENTER LINE OF STORM DRAIN WHEN DIAMETER D₁ IS 48" OR LESS, IN WHICH CASE PLACE E BARS SYMMETRICALLY AROUND SHAFT AT 45° WITH CENTER LINE AND OMIT J BARS.
3. L AND P SHALL HAVE THE FOLLOWING VALUES UNLESS OTHERWISE SHOWN ON THE PROJECT DRAWINGS:
 - A. D₂ = 96" OR LESS, L = 5'-6", P = 5"
 - B. D₂ = OVER 96", L = 6'-0", P = 8"
 L MAY BE INCREASED OR LOCATION OF MANHOLE SHIFTED TO MEET PIPE ENDS. WHEN L GREATER THAN THAT SHOWN ABOVE IS SPECIFIED, D BARS SHALL BE CONTINUED 6" O.C.
4. STATIONS OF MANHOLES SHOWN ON PROJECT DRAWINGS APPLY AT CENTER LINE OF SHAFT. ELEVATIONS ARE SHOWN AT CENTER LINE OF SHAFT AND REFER TO THE PROLONGED INVERT GRADE LINES.
5. REINFORCEMENT SHALL CONFORM TO ASTM A 615, GRADE 40, AND SHALL TERMINATE 1 1/2" CLEAR OF CONCRETE SURFACES UNLESS OTHERWISE SHOWN.
6. FLOOR OF MANHOLE SHALL BE STEEL TROWELED TO SPRING LINE.
7. BODY OF MANHOLE SHALL BE POURED IN ONE CONTINUOUS OPERATION EXCEPT THAT A CONSTRUCTION JOINT WITH A LONGITUDINAL KEY WAY MAY BE PLACED AT SPRING LINE.
8. THICKNESS OF THE DECK SHALL VARY WHEN NECESSARY TO PROVIDE A LEVEL SEAT BUT SHALL NOT BE LESS THAN THE TABULAR VALUES FOR F SHOWN ON THIS PLAN.
9. D BARS SHALL BE #4 FOR D₂ = 39" OR LESS, #5 FOR D₂ = 42" TO 84" INCLUSIVE AND #6 FOR D_S = 90" OR OVER. TIE BARS SHALL BE #3 BARS.
10. CENTER LINE OF INLET PIPE SHALL INTERSECT INSIDE FACE OF CONE AT SPRING LINE UNLESS OTHERWISE SHOWN.
11. STEPS SHALL CONFORM TO STANDARD PLAN 324. UNLESS OTHERWISE SHOWN STEPS SHALL BE SPACED 14" TO 15" ON CENTER. THE LOWEST STEP SHALL NOT BE MORE THAN 2'-6" ABOVE THE INVERT.
12. MANHOLE FRAME AND COVER SHALL CONFORM TO STANDARD PLAN 324. UNLESS OTHERWISE SHOWN.
13. MANHOLE SHAFT SHALL CONFORM TO STANDARD PLAN 322. UNLESS OTHERWISE SHOWN.

THE FOLLOWING STANDARD PLANS ARE INCORPORATED HEREIN:

- 324 24-INCH MANHOLE FRAME AND COVER
- 325 STEEL STEPS

CITY OF RANCHO CUCAMONGA, CALIFORNIA

REVISIONS
6-20-95

APPROVED BY:

Mr. J. J. J. J.
CITY ENGINEER DATE
R.C.E. 24953

**MANHOLE NO. 2
36" PIPE & LARGER**

USE WITH STANDARD SPECIFICATIONS FOR PUBLIC WORKS CONSTRUCTION

STANDARD PLAN

319

SHEET 2 OF 2