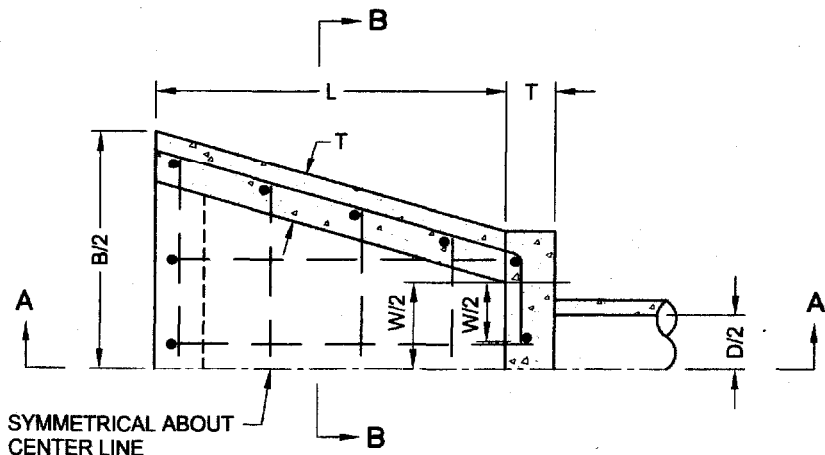
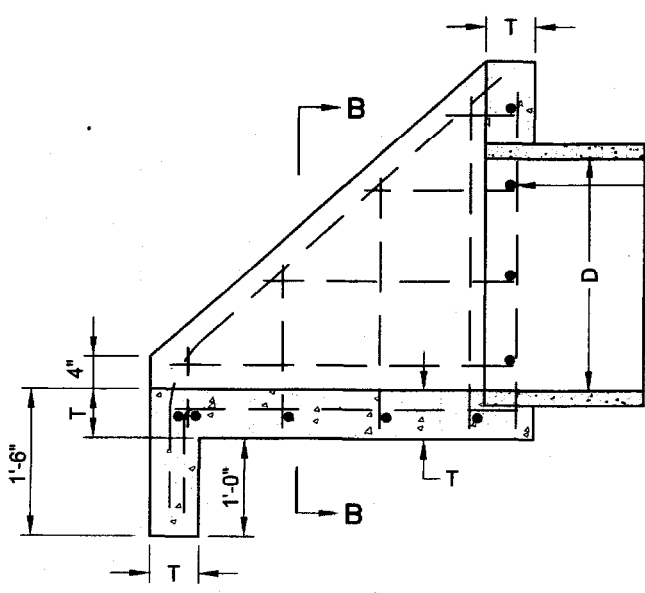


R:\Utilities\City_Std_Details\Sewer_Drainage\S_280_PipeInletOutletStructure_24to60InPipes.dwg

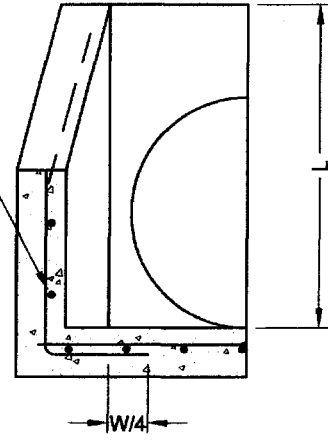


PLAN VIEW



SECTION A-A

SEE TABLE FOR REINFORCEMENT



SECTION B-B

NOTES:

1. 'B' MAY BE REDUCED IF REQUIRED BY CHANNEL DIMENSIONS WITH ENGINEER'S APPROVAL.
2. REINFORCING BAR SPACING SHOWN IS MAXIMUM SPACING.
3. USE CLASS 'B' CONCRETE.
4. CHAMFER ALL EXPOSED EDGES.
5. FOR TRASH RACK SEE S-290
6. FOR PIPES LARGER THAN 60", STRUCTURES SHALL BE ENGINEERED.
7. COMPACT SUBGRADE TO 90% RELATIVE COMPACTION. SCARIFY AND RECOMPACT TOP 6" TO 95% RELATIVE COMPACTION.

DIMENSIONING AND REINFORCING

D	W	B	L	T	ALL REINFORCING
24"	3'-0"	4'-7"	2'-11"	6"	#4 @ 12"
27"	3'-3"	5'-0"	3'-4"	6"	#4 @ 12"
30"	3'-5"	5'-3"	3'-10"	6"	#4 @ 12"
33"	3'-5"	5'-3"	4'-0"	6"	#5 @ 12"
36"	3'-8"	5'-8"	4'-2"	6"	#5 @ 12"
42"	4'-4"	6'-4"	4'-8"	6"	#5 @ 12"
48"	4'-10"	7'-2"	5'-2"	8"	#6 @ 12"
54"	5'-4"	8'-0"	6'-0"	8"	#6 @ 12"
60"	6'-0"	8'-10"	6'-6"	8"	#6 @ 12"

REV.	DATE	DESCRIPTION