

302

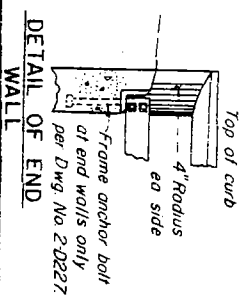
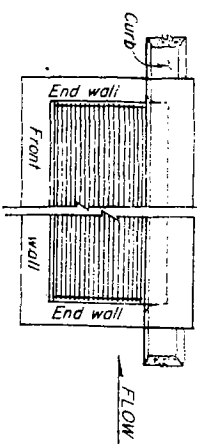
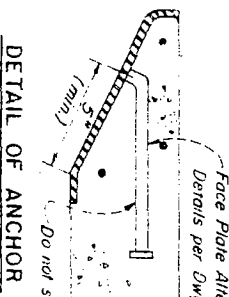
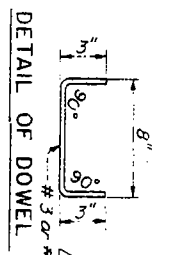
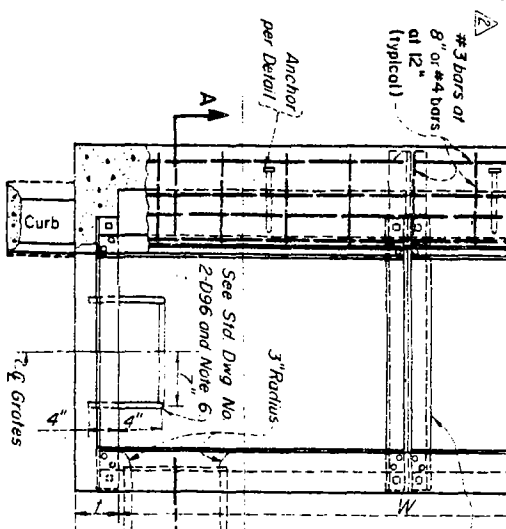
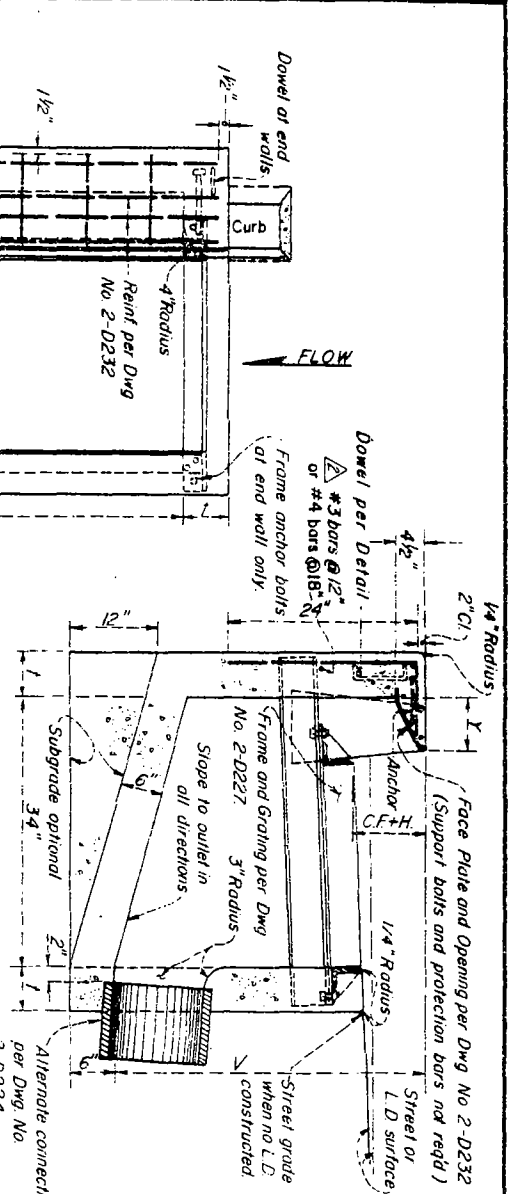
NOTES

1. **GRATING:** One grating required unless otherwise shown on the general plan. Position grating and support assembly as required by Sid Dwg Nos. 2-D248 and 2-D415.
2. **CONNECTOR PIPE:** Locate pipe at downstream end of basin unless specifically noted otherwise on the general plan. Pipe shall be trimmed the final shape and length before the placement of the concrete.
3. **CONCRETE:** Design, $f'_c = 3000$ psi compressive strength at 28 days.
Floor of the basin shall slope from all walls to the outlet and shall be given a steel-troweled finish. Street-side walls of the basin shall be poured to the elevation of the adjacent local depression or street surface. Curvature of the end walls of the gutter opening shall be formed by curved forms. Surface of all exposed concrete shall conform in slope, grade, color, and finish to the existing, or proposed, curb and walk adjacent to the basin.
4. **REINFORCEMENT:** (Sid. Dwg No. 2-D171)
Top Slab - As required on the structural plan.
Walls and Floor - As required by Standard Drawing No. 2-D172.
5. **DIMENSIONS:**
Curb face at the catch basin opening shall be as required by Standard Drawings Nos. 2-D248, and 2-D415, or as shown on the general plan.
 $V = 3'-6"$ unless otherwise shown on the general plan.
 $W = 2'-11\frac{1}{2}"$ for one grating and odd $3'-5\frac{3}{8}"$ for each additional grating.
 $Y =$ variable to $8\frac{1}{2}$ inches maximum.
 $I = 6$ inches if V is $4'-0"$ or less; $I = 8$ inches if V is $4'-1"$ to $8'-0"$.
 $I = 10$ inches if V is $8'-1"$ or more.
 $H = 0$ inches when no L.D. is constructed.
6. **STEPS:** (Sid. Dwg. No. 2-D96)
V to $3'-0"$ (incl.) place one step of 12 inches above the floor of the basin.
 V over $3'-0"$ place steps at 12-inch intervals from floor of basin to a minimum of 12 inches below top of the grating.
Construct steps on front wall when connector pipe is aligned to downstream end wall.

Supersedes drawing of the same number dated June '52

LOS ANGELES COUNTY
FLOOD CONTROL DISTRICT

CATCH BASIN NO. 7
PLAN, SECTION, &
DETAILS



DRAWN BY		REVISIONS	
HLH	MARK	DATE	DESCRIPTION
CHANGED BY		8-2-70	Added location for #4 bars alternates
DWHL		2-1-74	
DESIGNED BY			
GLP			
SUBMITTED BY			
CWH			

RECOMMENDED BY	APPROVED BY	DATE	SCALE
		5-15-68	5-15-68
DIVISION ENGINEER	CIVIL ENGINEER	DWG. NO. 2-D170	SHEET 1 OF 1