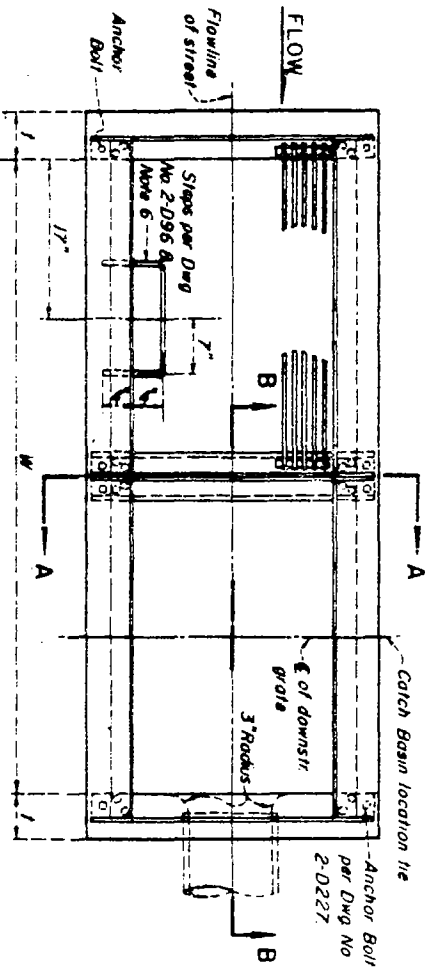
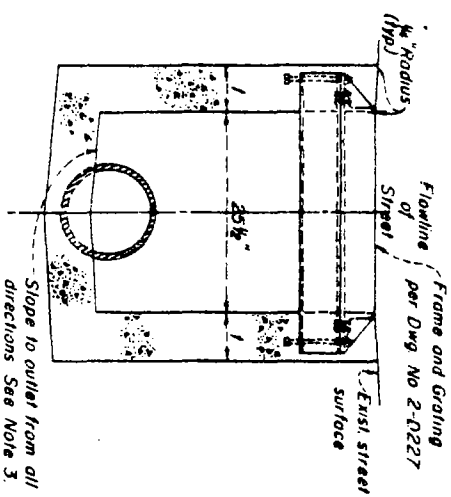


2-D-227

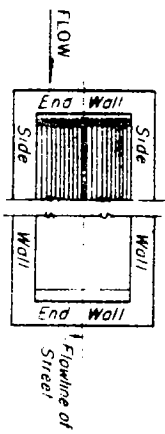
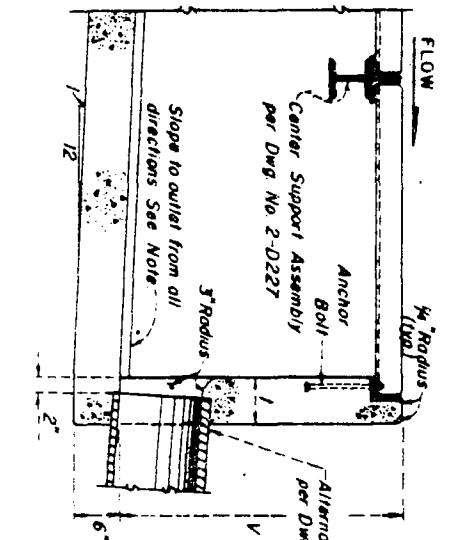


PLAN

SECTION A-A



SECTION B-B



NOTES

- 1 GRATINGS: One grating is required unless otherwise shown on the general plan.
- 2 CONNECTOR PIPE: Pipe shall be located at the floor and downstream end of the basin unless specifically noted otherwise on the general plan. Pipe shall be trimmed to final length and shape before the placement of concrete.
- 3 CONCRETE: Design,  $f'_c=3,000$  psi, compressive strength at 28 days. Floor of the basin shall slope from all walls to the outlet and shall be given a steel-troweled finished surface. Walls of the basin chamber shall be poured to the elevation and slope of the existing street surface.
- 4 REINFORCEMENT: (Standard Drawing No 2-D171) Walls and Floor - As required by Standard Drawing No 2-D172
- 5 DIMENSIONS:  $V=3'-0"$ , unless otherwise shown.  $W=2'-11\frac{1}{2}"$  for one grate, add  $3'-5\frac{1}{2}"$  for each additional grate.  $1=6$  inches if  $V=4'-0"$  or less,  $1=8$  inches if  $V=4'-1"$  to  $8'-0"$ ,  $1=10$  inches if  $V=8'-1"$  or more.
- 6 STEPS: (Standard Drawing No 2-D961)  $V$  to  $3'-0"$  incl., place one step 12 inches above the floor of the basin.  $V$  over  $3'-0"$ , place steps at 12-inch intervals from the floor of the basin with the top step at 12 inches (minimum) below the top of the grate. Construct steps on opposite side wall when connector pipe is aligned to drawing location of steps.

LOS ANGELES COUNTY  
FLOOD CONTROL DISTRICT  
CATCH BASIN NO. 5  
PLAN, SECTION,  
8 DETAILS

Supersedes drawing of the same number dated AUG. 1950

DRAWING BY		REVISIONS	
NAME	DATE	DESCRIPTION	
H.L.H.			
D.W.H.			
G.J.P.			
C.W.H.			

BASIN AND GRATING  
ALIGNMENT PLAN

RECOMMENDED BY: *C.E. CLAWSON*  
 DIVISION ENGINEER, IN CHARGE  
 APPROVED BY: *William J. Moore*  
 CHIEF ENGINEER  
 SCALE: NONE  
 DATE: 5-15-68  
 DWG. NO. 2-D164  
 SHEET 1 OF 1