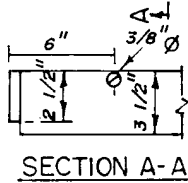
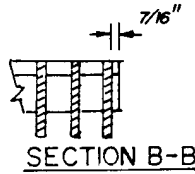


NOTE:  
 BEARING BARS TO BE  
 3 1/2" X 1/4" BARS ON  
 1 7/8" CENTERS.  
 3/8" Ø CROSS BARS RESISTANCE  
 WELDED OR ELECTROFORGED  
 TO BEARING BARS.  
 WEIGHT OF GRATE 141 LBS.  
 USE TYPICAL FRAME  
 AS SHOWN.  
 ALL GALVANIZED AFTER FAB.

3/16 FILLET WELD FULL DEPTH  
 EACH SIDE ALL BARS.

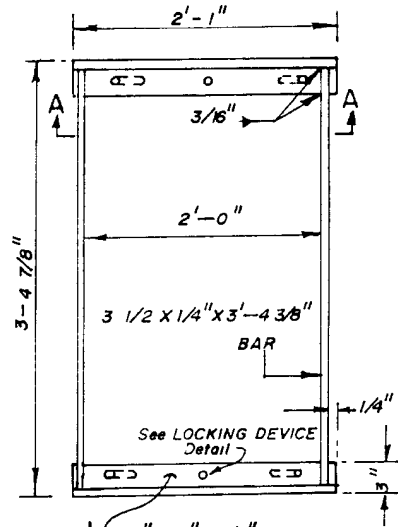


SECTION A-A



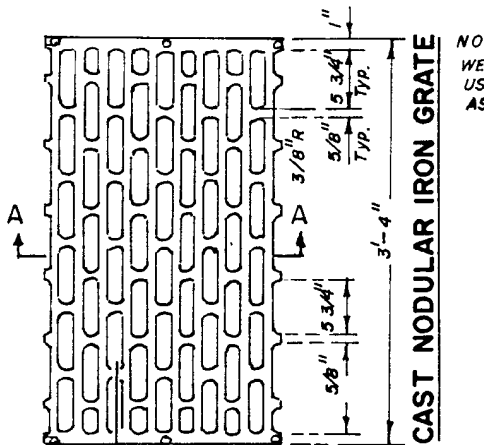
SECTION B-B

**WELDED STEEL GRATE**



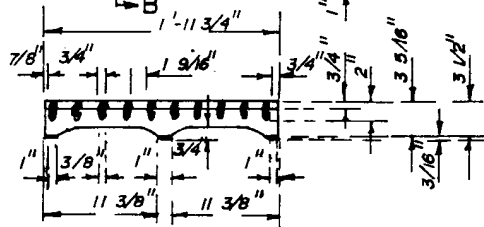
SECTION A-A

**TYPICAL FRAME**

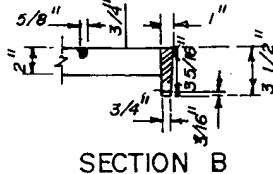


**CAST NODULAR IRON GRATE**

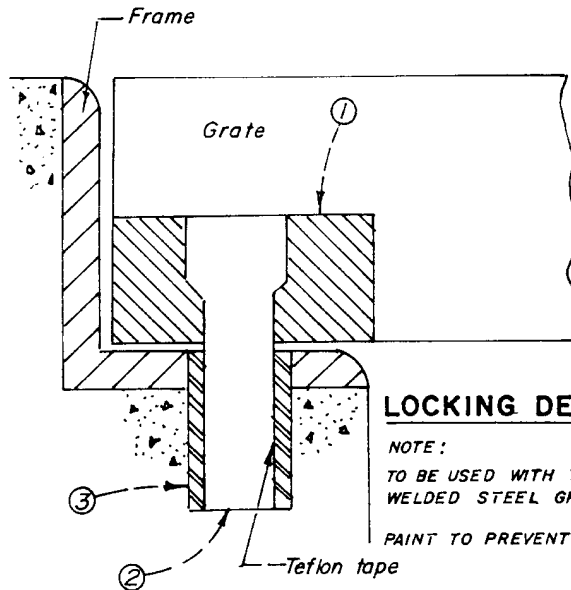
NOTE:  
 WEIGHT OF GRATE 155 LBS.  
 USE TYP. FRAME  
 AS SHOWN



SECTION A-A



SECTION B



**LOCKING DEVICE**

NOTE:  
 TO BE USED WITH THE  
 WELDED STEEL GRATE.  
 PAINT TO PREVENT RUST.

- ① USE 3/4" THICK STL. BAR. DRILL 1/2" HOLE & COUNTERSINK WITH 3/4" DRILL 3/8" DEEP. WELD TO GRATE.
- ② 1/2" DIA ALLEN BOLT
- ③ USE 1/2" CONCRETE ANCHOR OR 1/2" THREADED RECEIVER WELDED TO FRAME.

Revised	Drawn	Date DEC. 88	<b>CITY OF CORONA PUBLIC WORKS DEPARTMENT</b>	CATCH BASIN TYPE "C" GRATE AND FRAME	STD. PLAN 203-4
	Approved	Date 1-3-89			
	<i>Joseph R. Palencia</i> Director of Public Works				