

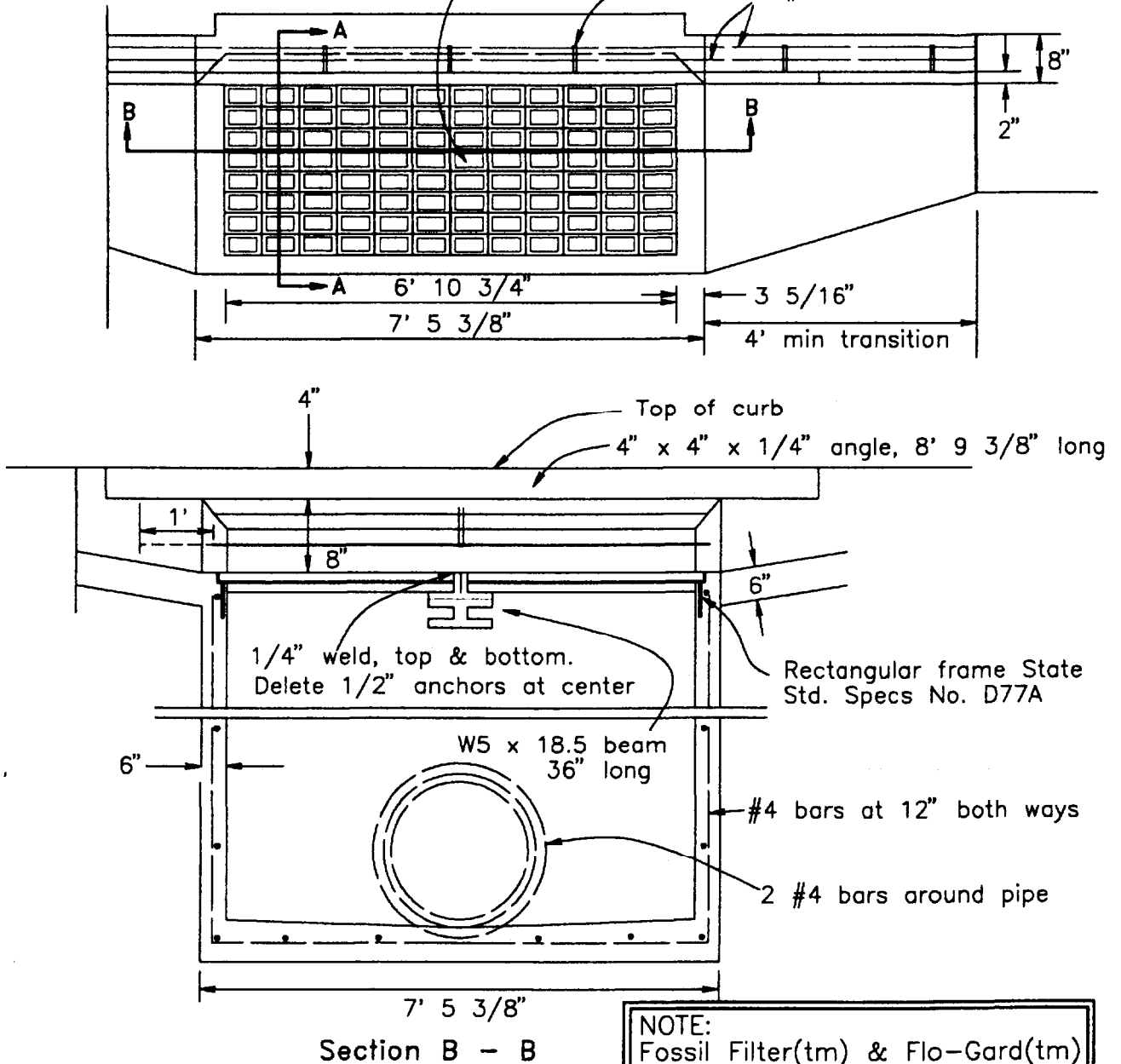
See Std. D.6 for details and Section A-A

Note: Beam, face angle, grates and frames shall be hot dip galvanized after fabrication

All materials shall satisfy California State Specifications

Grates: Welded steel, Type 24-12x, in accordance with State Std. Spec. D 77B

1/2" dia. anchors
2 # 4 Bars



NOTE:
Fossil Filter(tm) & Flo-Gard(tm)
required. See D.4a, D.4b, D.6

Approved:

[Signature] 29 JUNE 07
Director of Public Works/
Designer

[Signature] 29 June 07
R. James Garing, RCE 26993
City Engineer



City of Grover Beach

Double Drop Inlet

D.5