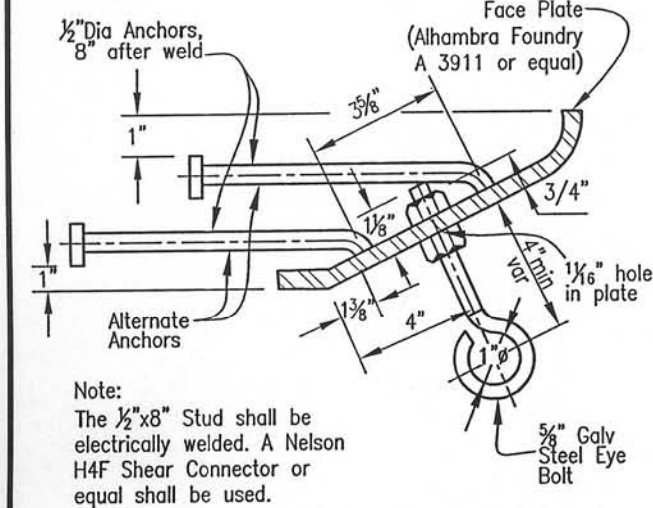


| LENGTH OF CURB OPENING | NO. OF ANCHORS |
|------------------------|----------------|
| 3'-6" or less          | 2              |
| 7'-0"                  | 3              |
| 10'-0"                 | 4              |
| 14'-0"                 | 5              |
| 21'-0"                 | 7              |

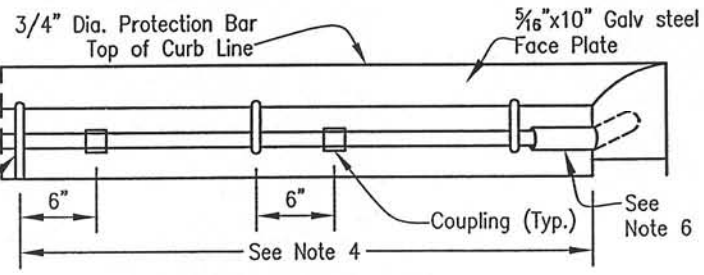
**FACE PLATE ANCHORAGE AND CURB SUPPORT DETAIL**

**NOTES:**

1. One eyebolt shall be placed 12" from each end of faceplate.
2. Eye bolts shall be symmetrically spaced in the curb opening so that the unsupported span is not more than 4'; support bolts, when used should be considered as eyebolts in the spacing.
3. One coupling shall be placed 6" to the right or left of each eye bolt with the exception of the last eye bolt. Couplings shall be threaded to facilitate removal of protection bar.
4. Galvanized steel support bolts shall be installed when length of curb opening exceeds 7'-0" and shall be spaced at not more than 7'-0" O.C. and not less than 5'-0" O.C.
5. Face plate anchors shall be uniformly spaced not to exceed 4' between centers and shall be placed 4 1/2" from each end of the face plate. An anchor shall be placed over each W-beam in a grating basin.
6. Protection bar end anchors (Alhambra Foundry A-1577 or equal) to be embedded in end walls.
7. All metal shall be galvanized after fabrication..
8. Support bolts, eye bolts, and anchors may be attached by a full penetration buff weld as an alternative.
9. Place a 3/4" Dia. Protection bar (Alhambra Foundry A-1564 or equal) horizontally across the entire length of the curb opening.
10. See Std. Plan 306 for additional miscellaneous inlet details and notes.
11. Curb section shall match adjacent curb type.
12. Curb opening shall conform to curb alignment.
13. Height fo curb opening will vary with the type of curb and the depth of the local depression (Std. Plans 307 and 308).
14. All inlets shall be stamped with or painted as directed by the Engineer "Do Not Dump - Drains to Ocean" Notice.



**EYE BOLT AND ALTERNATE ANCHOR DETAIL FOR FACE PLATE**



**PROTECTION BAR DETAIL**



3-25-04  
DATE APPROVED

CITY OF ORANGE PUBLIC WORKS DEPARTMENT

STANDARD  
PLAN No.  
305

MISCELLANEOUS CURB INLET  
DETAILS AND NOTES

*[Signature]*  
PUBLIC WORKS DIRECTOR/C.E.  
*[Signature]*  
ASSISTANT CITY ENGINEER