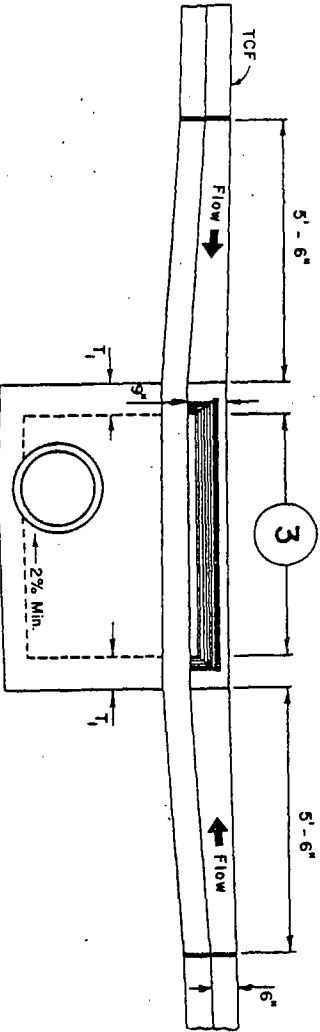
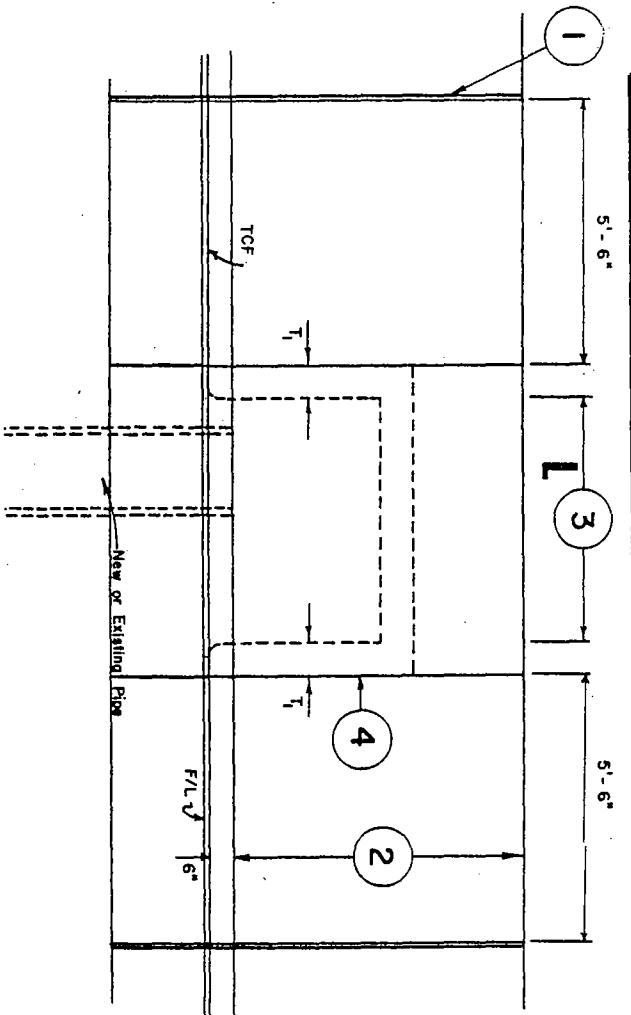


NOTES

1. 1/2" MAXIMUM EXPANSION JOINT MATERIAL SHALL BE PROVIDED AT THE ENDS OF THE CURB TRANSITIONS AS SHOWN.
2. THE WIDTH OF THE TOP SLAB IS VARIABLE TO MATCH EXISTING SIDEWALKS. SEE STANDARD DETAIL 4-040.
3. THE MINIMUM LENGTH OF OPENING IS 3' AND THE MAXIMUM LENGTH IS 21'. SEE STANDARD DETAIL 2-020.
4. 1-1/2" CONTRACTION JOINTS SHALL BE PROVIDED AS SHOWN.
5. THE TOP SLAB, CURB TRANSITIONS, AND GUTTER SHALL BE POURED USING CLASS A OR CLASS B CONCRETE. WHERE THE POUR IS NOT MONOLITHIC, DOWELLING WILL BE REQUIRED AS SPECIFIED BY THE COUNTY. SEE STANDARD DETAIL 2-025 FOR CONSTRUCTION JOINT DETAILS.



Elevation View



6. IF THE INLET IS CONSTRUCTED LESS THAN 30' CLEAR OF A CURB RADIUS APPROACHING A CROSS GUTTER, ADDITIONAL STREET CROSS SLOPE SHALL BE DESIGNED TO DIRECT THE SURFACE WATER INTO THE DRAINAGE INLET.
7. CURB FACE TRANSITIONS AND WARP AREAS SHALL NOT EXTEND INTO CURB RETURNS, DRIVEWAYS, ALLEY, ENTRANCES, OR ANY OTHER CURB OPENINGS.
8. SEE TABLE A ON STANDARD DETAIL 2-020 FOR WALL THICKNESS AND BAR REINFORCING STEEL NOTES. THE TOP SLAB SHALL BE 6" THICK AND THE BOTTOM SLAB SHALL BE 8" THICK IN ALL CONDITIONS.

COUNTY OF SANTA BARBARA, CA. - DEPARTMENT OF PUBLIC WORKS - ROADS DIV.

Approved by

2-040

TYPE A DROP INLET

Charles Wagner 4/1/87
DIRECTOR OF PUBLIC WORKS DATE