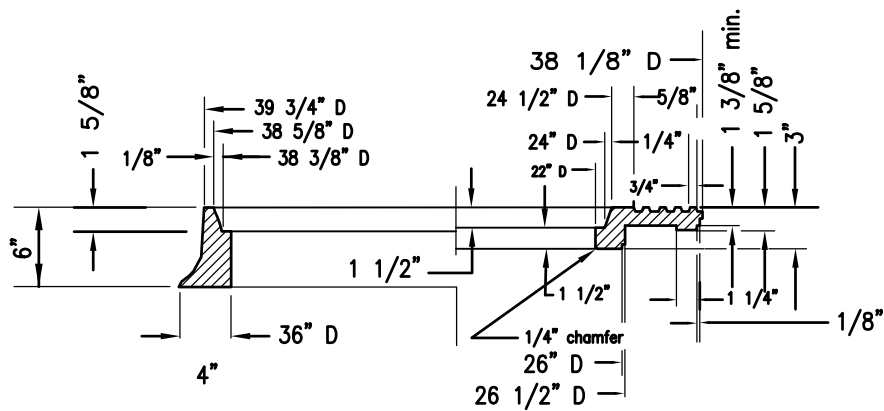


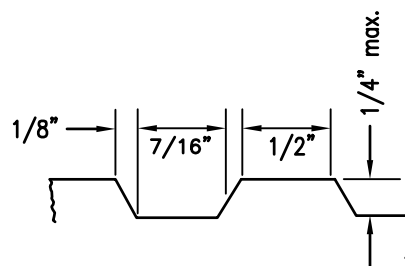
HALF PLAN FRAME & COVER



HALF SECTION FRAME & COVER

NOTES

1. Frame and cover shall be cast iron. Cast iron shall conform to ASTM 48, Class 35B.
2. Weights: Frame 314 lbs - 363 lbs.
Outer Cover 285 lbs - 330 lbs.
Inner Cover 147 lbs - 171 lbs.
3. Machine all matching surfaces and seats of frame and cover to prevent rocking.
4. Imported frames and covers shall have the country of origin marked in compliance with federal regulations.



DETAIL

Revision	By	Approved	Date
UPDATED	DG	T. STANTON	12/15
REVIEWED	DG	T. STANTON	10/18

SAN DIEGO REGIONAL STANDARD DRAWING

36" MANHOLE FRAME
AND TWO CONCENTRIC COVERS
HEAVY DUTY

RECOMMENDED BY THE SAN DIEGO
REGIONAL STANDARDS COMMITTEE

T. Stanton 10/25/2018
Chairperson R.C.E. 19246 Date

DRAWING
NUMBER M-03A