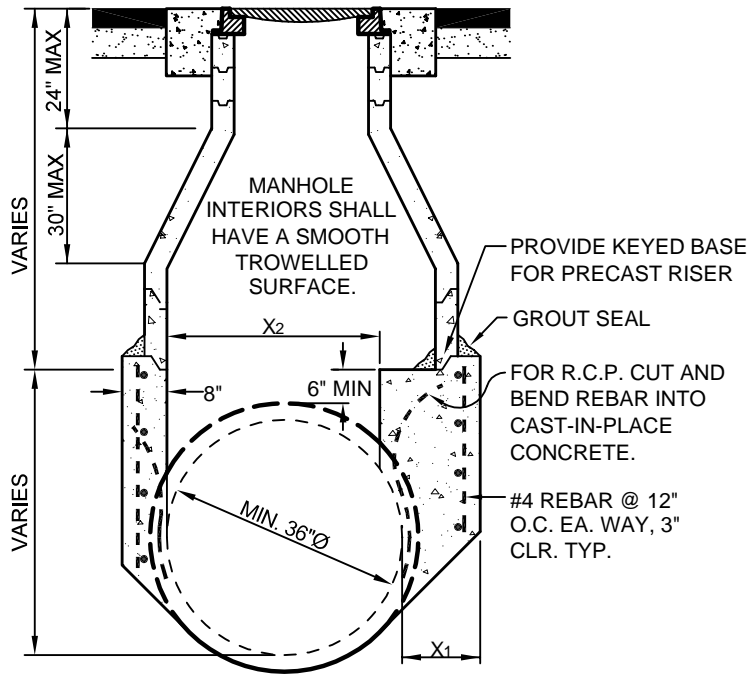
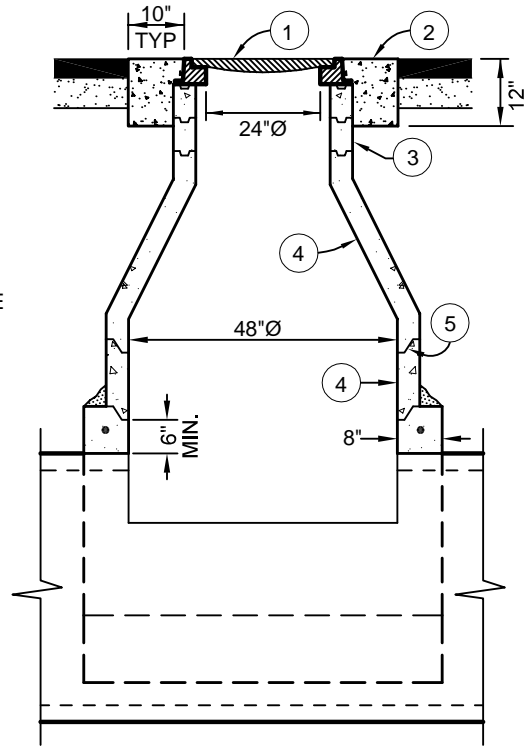


Revisions

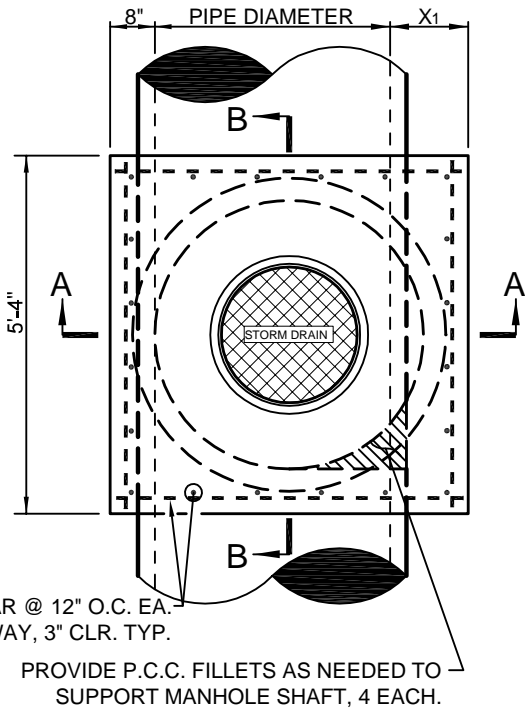
Description	Approved	Date	Description	Approved	Date



SECTION A-A



SECTION B-B



PLAN

DIMENSIONS				
PIPE Ø	36"	42"	48"	54" AND GREATER
X1	20"	14"	8"	EQUALS PIPE WALL THICKNESS
X2	32"	38"	44"	48"

NOTES:

1. MANHOLE COVER AND FRAME SHALL HAVE A MINIMUM 24" Ø OPENING AND CONFORM TO HS-20 TRAFFIC LOADING. LID SHALL HAVE AN OPEN PICKHOLE, AND BE LETTERED "STORM DRAIN".
2. COLLAR SHALL BE CLASS A PORTLAND CEMENT CONCRETE, TROWELLED TO STREET GRADE, AND ALLOWED TO CURE 48 HOURS PRIOR TO FULL TRAFFIC USE.
3. PROVIDE ADJUSTING RINGS AS NEEDED, GROUTED ON THE INSIDE.
4. PRECAST SHAFT(S) AND CONCENTRIC CONE SHALL MEET ASTM C-478 61T FOR CLASS 2 REINFORCED CONCRETE PIPE, OR AS APPROVED BY THE DEPARTMENT.
5. JOINTS SHALL BE WATERTIGHT, SET WITH BUTYL RUBBER SEALANT (RUB'R-NEK OR EQUAL).
6. UNDER NO CIRCUMSTANCES SHALL UTILITY LIDS AND CONCRETE COLLARS BE LOCATED WITHIN CURBS, GUTTERS, SIDEWALKS, DRIVEWAY APRONS, CURB RAMPS, OR CROSS GUTTERS.



SAN LUIS OBISPO COUNTY DEPARTMENT OF PUBLIC WORKS  
**STORM DRAIN MANHOLE**  
 FOR PIPE DIAMETERS GREATER THAN 36"

Scale:	Issued:
NTS	Aug. 2006
Drawing No:	<b>D-3a</b>
Sheet No:	