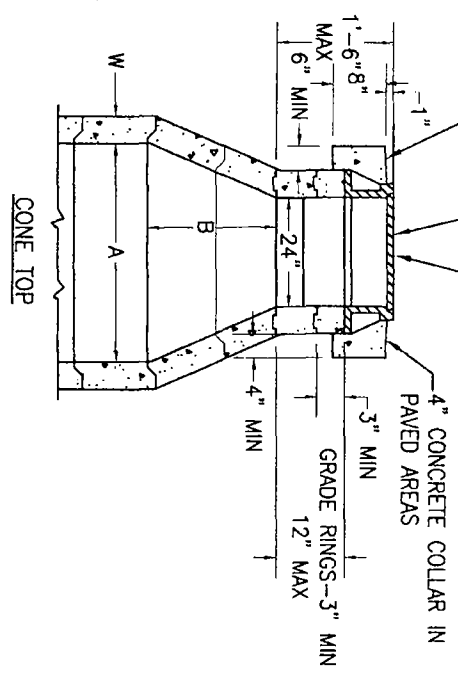
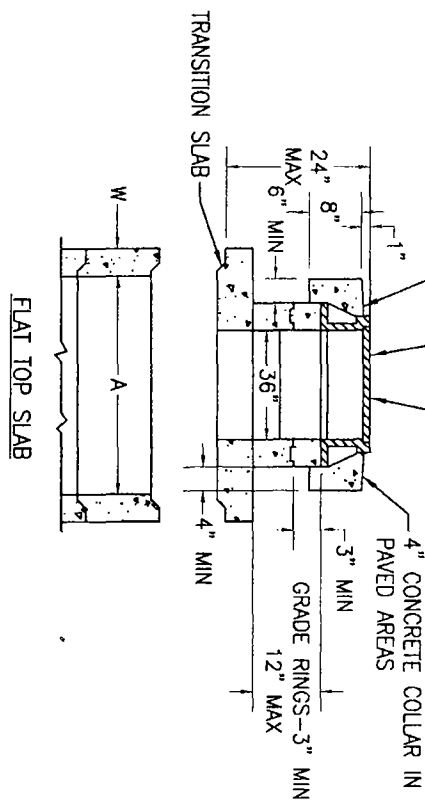


IN PAVED AREAS SET FLUSH WITH PAVEMENT, IN UNPAVED AREAS SET 1" BELOW ADJACENT GRADE.
6" CONCRETE COLLAR W/2-#4 HOOPS IN UNPAVED AREAS

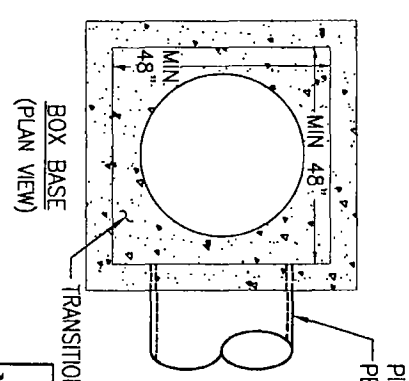
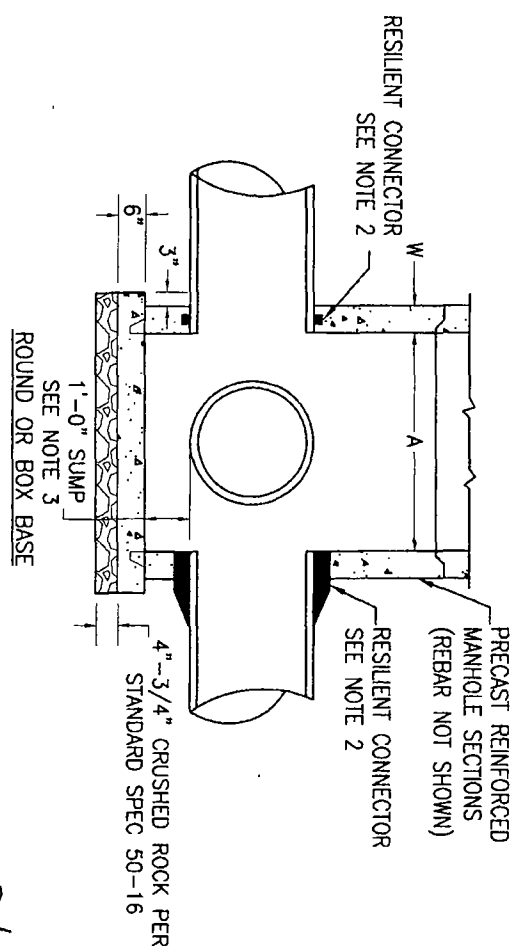


PROVIDE FRAME AND COVER PER STANDARD DRAWING 9-9 IN PAVED AREAS. USE GRATE TYPE COVER IN UNPAVED AREAS PER STANDARD DRAWING 9-11.

IN PAVED AREAS SET FLUSH WITH PAVEMENT, IN UNPAVED AREAS SET 1" BELOW ADJACENT GRADE.
6" CONCRETE COLLAR W/2-#4 HOOPS IN UNPAVED AREAS



PROVIDE FRAME AND COVER PER STANDARD DRAWING 9-10 IN PAVED AREAS. USE GRATE TYPE COVER IN UNPAVED AREAS PER STANDARD DRAWING 9-11.



PIPE OPENINGS PER PLAN AS REQUIRED

TABLE OF MINIMUM DIMENSIONS FOR ROUND MANHOLES

M.H.	A	B	W
48"	48"	18"	5"
60"	60"	30"	6"
72"	72"	**	7"
84"	84"	54"	8"
96"	96"	--	9"

** - TRANSITION SLAB REDUCES THE INSIDE DIAMETER FROM 72" TO 60"

James DeLore
DIRECTOR, DEPARTMENT OF WATER RESOURCES

SACRAMENTO COUNTY
MUNICIPAL SERVICES AGENCY
STANDARD PRECAST CONCRETE
DRAINAGE MANHOLE

DRAWN BY: S. PIMENTEL
SCALE: NONE
DATE: 6/07

9-7A
SHEET 1 OF 2

NOTES:

1. ALL MANHOLES SHALL MEET H-20 LOAD SPECIFICATIONS.
2. ON ALL PIPE UP TO 30" I.D. USE FLEXIBLE COMPRESSION GASKET OR BOOT CONNECTOR CONFORMING TO ASTM C-923. CONNECTION SHALL BE WATER AND SOIL TIGHT. FOR PIPES GREATER THAN 30" I.D., BASE MAY BE CAST-IN-PLACE AND A WATER STOP CONFORMING TO ASTM C-923 SHALL BE USED.
3. SUMP SHALL BE 1'-0" DEEP, MEASURED FROM INVERT OF OUTFALL PIPE. SUMP NOT REQUIRED IF OUTFALL PIPE IS 24" I.D. OR LARGER. SUMPS SHALL NOT BE ALLOWED OUT OF THE COUNTY RIGHT OF WAY.
4. RISER SECTIONS, CONES, AND ADJUSTING RINGS SHALL CONFORM TO ASTM C-478.
5. ALL JOINTS SHALL BE MADE WITH PREFORMED PLASTIC JOINT SEALING COMPOUND OR PRE-LUBRICATED GASKET. FOLLOWING INSTALLATION GROUT ALL INTERIOR AND EXTERIOR JOINTS.
6. CONCENTRIC COMPONENTS SHALL BE USED UNLESS OTHERWISE SPECIFIED ON THE PLANS.
7. PRECAST MANHOLES SHALL BE SIZED TO PROVIDE THE FOLLOWING: THE ANNULAR SPACE ON THE INSIDE OF THE MANHOLE BARREL BETWEEN CORED PIPE CONNECTION HOLES SHALL BE A MINIMUM OF 10-INCHES. IF THE CONNECTION HOLE IS CAST MONOLITHICALLY WITH THE MANHOLE BARREL THE MEASUREMENT SHALL BE TAKEN FROM THE FINISHED CONCRETE CONNECTION SURFACE.
8. SEE SECTION 39, "MANHOLES".
9. CONSTRUCT WITH FLAT SLAB-TOP WHEN HEIGHT IS TOO SHALLOW TO CONSTRUCT WITH CONES.
10. FOR THE SLAB REDUCER OF THE BOX MANHOLE (BOX TO ROUND DIAMETER), THE DIAMETER OF THE ROUND REDUCER SHALL BE A MAX OF 12" SMALLER THAN THE INSIDE BOX WIDTH.
11. FLAT SLAB TOP MANHOLES SHALL HAVE A 36" MANHOLE FRAME AND COVER PER 9-10.


DIRECTOR, DEPARTMENT OF WATER RESOURCES

SACRAMENTO COUNTY
MUNICIPAL SERVICES AGENCY

**STANDARD PRECAST CONCRETE
DRAINAGE MANHOLE**

DRAWN BY: S. PIMENTEL
SCALE: NONE
DATE: 05/07

9-7A
SHEET 2 OF 2