

CONC. SUPPORT COLLAR SEE STD. DWG. SD-515

MANHOLE FRAME AND COVER SEE STD. DWG. SD-518 & SD-519

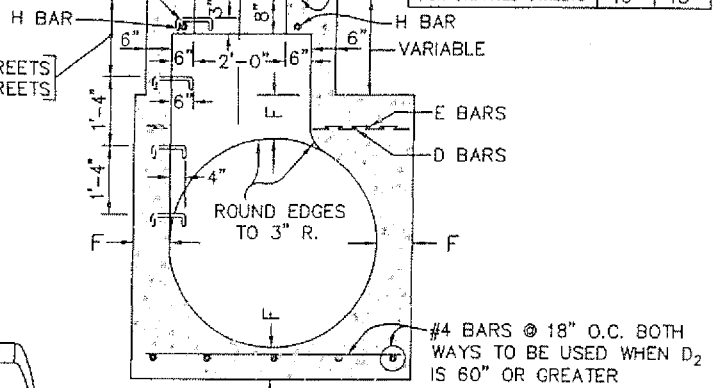
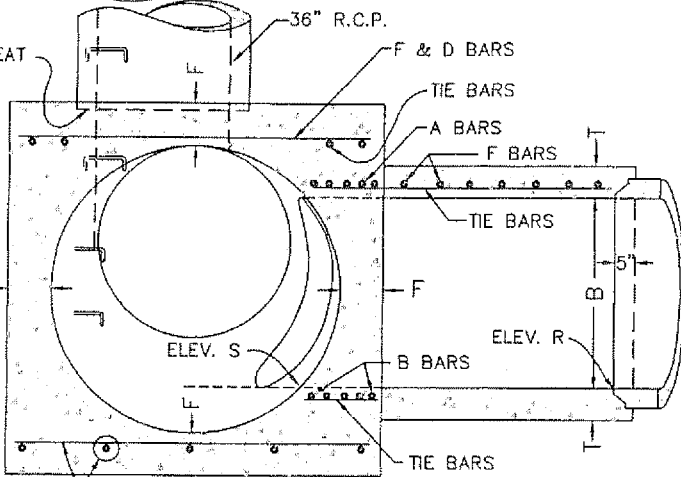
OMIT THIS STEP IN PAVED STREETS

CONCRETE RINGS AND REDUCER SEE STD. DWG. SD-514

3/4" Ø GALV. STEEL 1" S 16" O.C. STD DWG. SD-506 AND NOTE 8)

CONCRETE RINGS 5"x1" RING SEAT

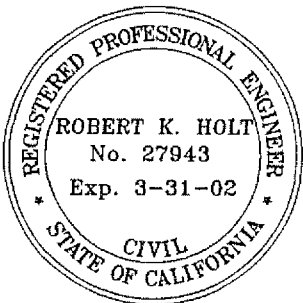
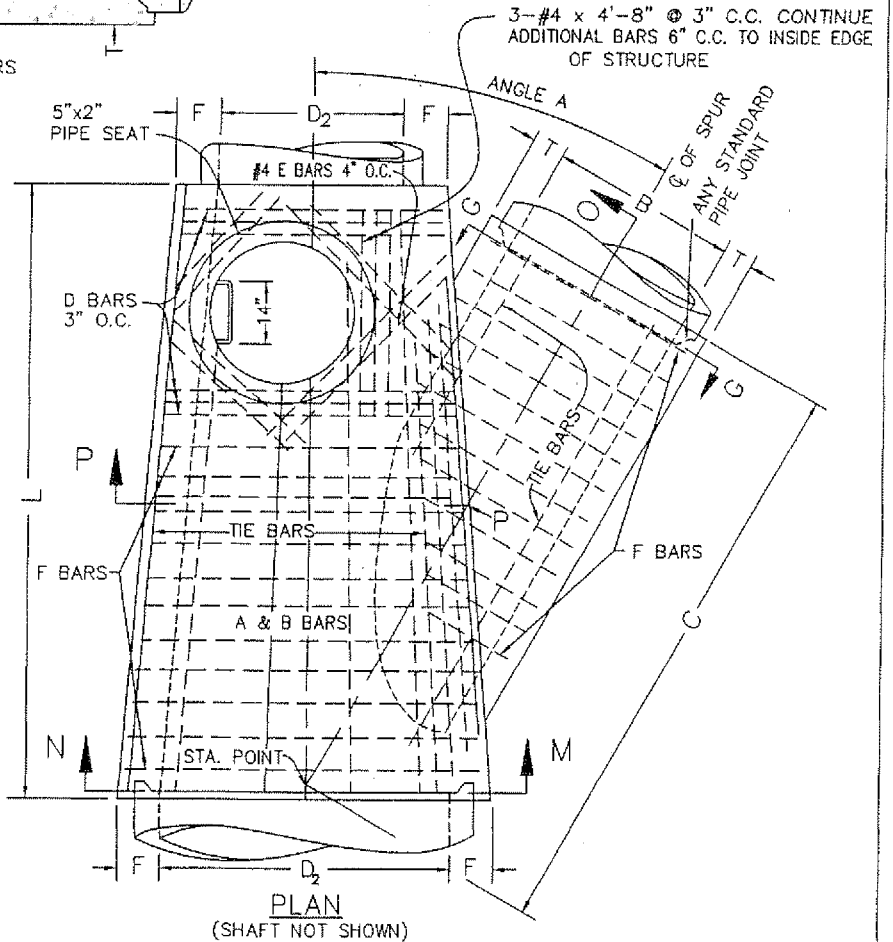
	MAX	MIN
FOR PAVED STREETS	11"	8 1/2"
FOR UNPAVED STREETS	16"	15"



SECTION N-M-P-O
PROJECTED P-P-O

* D ₂ , D ₁ OR B	A & B BARS	D & F BARS
12" - 39"	NO. 5 @ 3"	NO. 4 @ 6"
42" - 84"	NO. 6 @ 3"	NO. 5 @ 6"
90" - 144"	NO. 7 @ 3"	NO. 6 @ 6"

* USE D₂ OR D₁, WHICHEVER IS GREATER, OR B.



APPROVED: PUBLIC WORKS DIRECTOR

James W. Rodkey, Jr. DATE 9/7/00
JAMES W. RODKEY, JR.

APPROVED: CITY ENGINEER
Robert K. Holt DATE 8/31/00
ROBERT K. HOLT, P.E.

CITY OF
BLYTHE

STORM DRAIN
MANHOLE NO. 3

STANDARD DRAWING NO. SD-517

REVISION

BY DATE