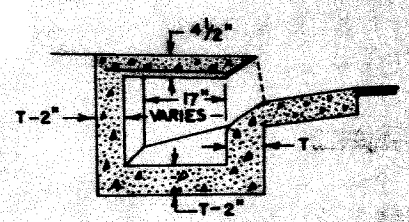
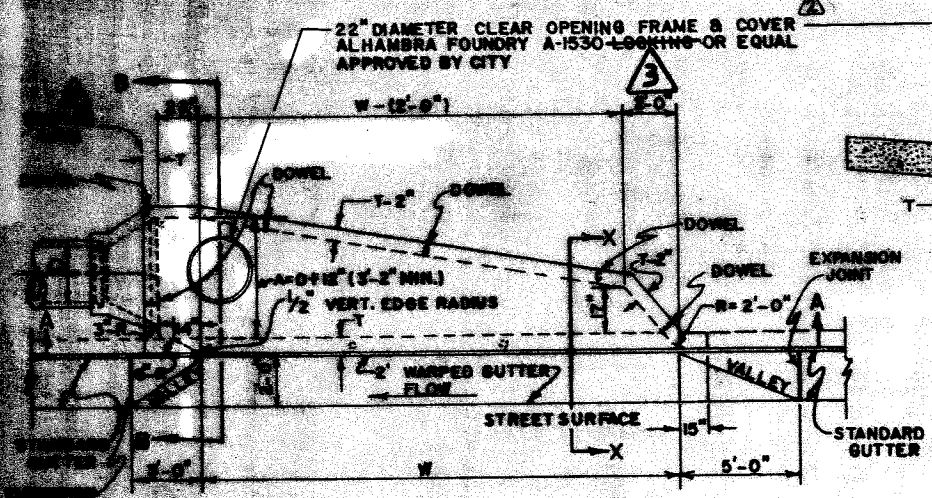


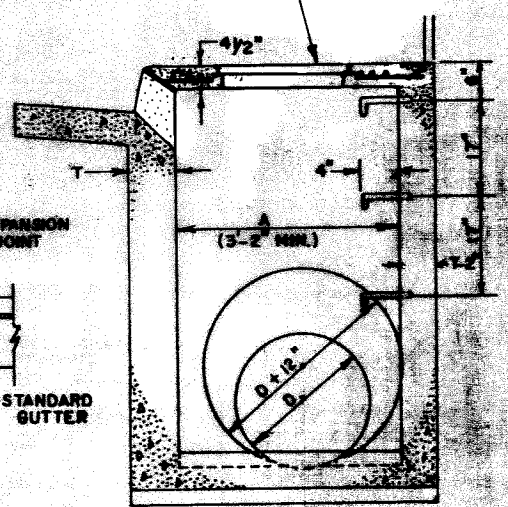
TOP SLAB REINFORCING PLAN



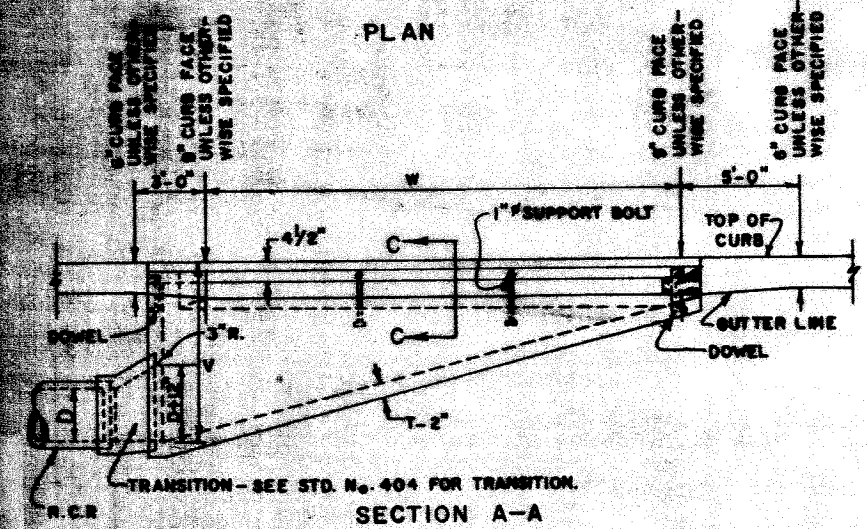
SECTION X-X



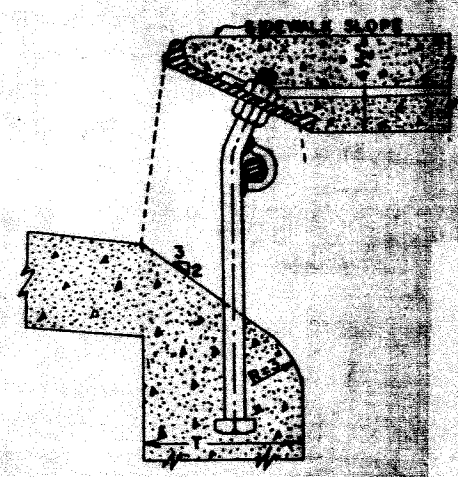
PLAN



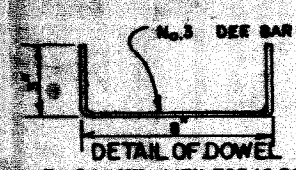
SECTION B-B



SECTION A-A



SECTION C-C



TO BE USED WHEN TOP IS POURED SEPARATE, AS INDICATED

APPROVED *Robert C. Walker* DATE *8/3/78*
 PUBLIC WORKS DIRECTOR - R.C.E. 18793

⚠	Added Station Line	<i>W</i>	<i>8.25.78</i>
⚠	Changed Std Dwg 450 to Alhambra A-1530 Locking	<i>W</i>	<i>7/23/87</i>
⚠	REMOVED LOCKING REQ.	<i>TS</i>	<i>12/2/04</i>

CITY OF RIVERSIDE
PUBLIC WORKS DEPT. - ENGINEERING DIV.
STORM WATER CATCH BASIN
TYPE 2

STANDARD DRAWING NO. 401
 Sheet 1 of 2

MARK	REVISIONS	APPR.	DATE

