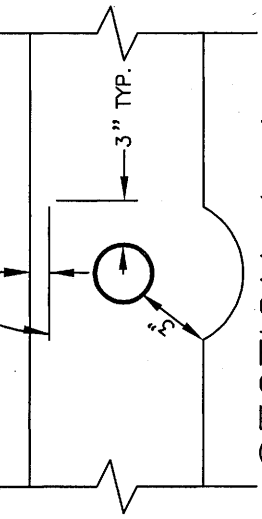
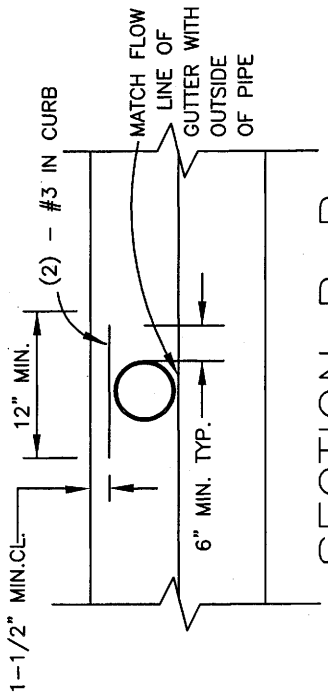


PLAN

#3 REBAR @ 6" O.C.
1 1/2" MIN. CL.



SECTION A-A



SECTION B-B

NOTES:

1. Drain shall be schedule 40 P.V.C.
2. Replace sidewalk per City Std. Dtl. 1-006.0 and 1-006.1
3. Replace curb and gutter per City Std. Dtl. 1-002.0
4. A maximum 3 inch dia. pipe shall be used in a 6 inch curb, 4 inch pipe in an 8 inch curb.
5. Pipe(s) shall have .005ft./ft. positive slope.
6. The number of pipes at any location shall not exceed four. There shall be a 3 inch minimum clearance between pipes.
7. In commercial areas, sawcut and remove sidewalk, curb and gutter per plan above.
8. In residential areas, remove a minimum of one panel length of sidewalk, curb and gutter. Dowel into gutter.
9. Pipe opening may be core-drilled in existing curb in lieu of curb removal.
10. Property owners are responsible for curb drain maintenance.

REVISION	DATE	APPROVED	CITY OF SANTA BARBARA - PUBLIC WORKS DEPARTMENT	STANDARD DETAIL
		<i>Anthony J. Shewell</i>	CURB OUTLET DRAIN - TYPE B	2-006.1-06
		DIRECTOR		
		DATE		
		11/31/07		