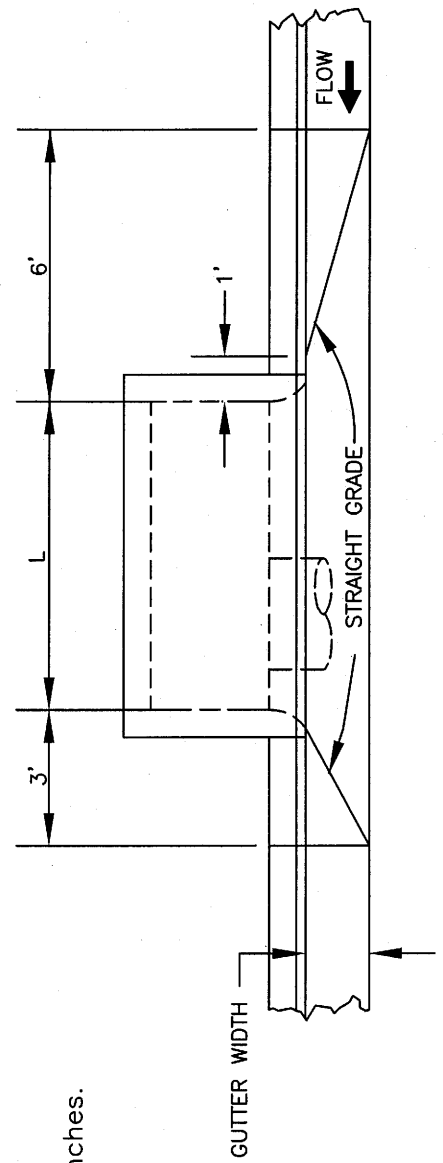


SECTION AT GUTTER F/L



PLAN - INLET ON GRADE

NOTES:

1. Gutter depression, curb transition and structure's top slab shall be poured monolithic.
2. Surface finish of gutter depression shall be light broom finish.
3. The width of the depressed gutter shall match street gutter width.
4. Concrete strength and curing compound per Detail 2-002.1.
5. Gutter depression shall be 3 inches.
6. Deep joint shall be 2" deep.

REVISED	DATE	APPROVED	CITY OF SANTA BARBARA - PUBLIC WORKS DEPARTMENT	STANDARD DETAIL
		<i>Anthony A. Dond</i>	GUTTER DEPRESSION - TYPE B	2-005.0-06
		PUBLIC WORKS DIRECTOR		
		1/31/87		
		DATE		